

# COMBERTON CONTACT FEBRUARY 2025

## Comberton Annual Pancake Race



Tuesday 18th Feb 10.30am  
at the Village Hall

## USEFUL TELEPHONE NUMBERS

### COMBERTON SURGERY

58 Green End, Comberton, CB23 7DY

01223 262500

#### Opening times Monday to Friday

Surgery 8:00 - 12:30 & 13:30 - 18:00

Dispensary 8:00 -12:30 & 14:00 - 18:00

Prescriptions can be collected outside of opening hours by signing up to use our Pharmaself machine at Comberton (see website for details)

[www.combertonandeversdensurgery.nhs.uk](http://www.combertonandeversdensurgery.nhs.uk)

### EVERSDEN SURGERY

33 Harlton Road, Little Eversden, CB23 1HB

01223 262579

#### Opening times Monday to Friday

Surgery 8:00 - 12:30 & 13:30 - 18:00

Dispensary 8:00 -12:30 & 14:00 - 18:00

#### Phones at both surgeries go to night service at 18:00

Repeat prescription requests will only be taken over the phone for housebound patients.

**BOURN SURGERY 01954 719313**

[ourn.surgery@nhs.net](mailto:ourn.surgery@nhs.net)

<b>Age Concern</b> Cambridge Information & Advice Line	<b>01354 696677</b>
<b>Apple Tree Dentist</b> 1-3 West Street, Comberton	<b>262838</b>
<b>Ash Croft Veterinary Surgery</b> 169 St Neots Rd, Hardwick	<b>01954 210250</b>
<b>Baptist Church</b> Church Office	<b>264707</b>
<b>Benefits Agency</b> Chesterton Road, Cambridge	<b>545200</b>
<b>Comberton Catholics</b> (Fr John Minh)	<b>832397</b>
<b>Comberton Library</b>	<b>0345 045 5225</b>
<b>Comberton Playgroup</b>	<b>262373</b>
<b>Comberton Village College</b>	<b>262503</b>
Adult Education	<b>264721</b>
<b>Cambridge Water Emergencies</b>	<b>01223 706050</b>
<b>Anglia Water Sewerage Emergencies</b>	<b>03457 145 145</b>
<b>Environmental Health Services (South Cambs)</b>	<b>03450 450500</b>
<b>Meridian Primary School</b>	<b>262423</b>
<b>Nursery Way Sheltered Housing</b>	<b>264434</b>
<b>Parkside Police Station</b>	<b>01480 456111</b>
<b>Samaritans</b>	<b>364455</b>
<b>Social Services</b>	<b>264466</b>
(emergency out-of-hours)	<b>01733 561370</b>
<b>St Mary's Church</b> (Curate Chris Westgarth)	<b>07710 661003</b>
<b>Street Light Failure reporting helpline</b>	<b>01954 233330</b>
<b>Village Help Scheme</b> (Chairman Barbara Mitton), See panel on page 7 for transport bookings	<b>262073</b>
<b>Wood Green Animal Shelter</b>	<b>01480 830014</b>
Stray dogs (South Cambs DC)	<b>443000</b>

# Contents

Regular dates for your diary	4
Comberton Contact Team	5
Wheelie Bin Collection Dates	5
Parish Council	5
Advertising Rates	5
From the Editor	6
Local Government Contacts	6
Comberton Village Website	6
Village Help Scheme	7
Comberton Luncheon Club	7
Comberton Library	11
Comberton Parish Council Bulletin	13
Comberton Opera	21
Comberton Ramblers	23
Comberton Antiquarian Society	23
Meridian Primary School	25
December Challenge Solution	29
Wildlife Survey	29
Comberton Allotments & Gardens Association	31
Comberton Twinning Association	33
February Challenge	35
Apples raise funds for ACT	37
Library at Home service	37
Comberton Village Hall Lettings Charges	38

**E D G E**

**COMMUNITY YOUTH CLUB**

**THURSDAYS. 4PM TO 6PM.  
COMBERTON BAPTIST CHURCH.**

## Regular dates for your diary

Day	Time	What	Where
Monday	Morning	Monday Studio	VH
Monday	9.30am - 11am	Messy Play (term time only)	CP
Monday	9.45am - 11am	Comberton Walkers	BC
Monday	3.40pm - 5.35pm	Children's Street Dance Classes	MS
Monday	6pm - 7pm	Tang Soo Do Junior 6-11	MS
Monday	7pm - 9pm	Tang Soo Do	MS
1 <sup>st</sup> , 2 <sup>nd</sup> , 4 <sup>th</sup> Monday	7pm - 9pm	Carpet Bowls	VH
3 <sup>rd</sup> Monday	7pm - 9pm	Comberton Winemakers	VH
Tuesday	10.30am - 12 noon	Cafe	VH
Tuesday	1.30pm - 4pm	Fabric and Yarns	BC
Tuesday	6.45pm - 7.30pm	ChaSamba Adult Fitness	MS
2 <sup>nd</sup> Tuesday	8pm (Except Aug)	Comberton WI	VH
4 <sup>th</sup> Tuesday	8pm - 9:30pm	Comberton Antiquarian Society	VH
Wednesday	10am - 11:30am	Comberton Baby & Toddler Group	VH
Wednesday	2pm - 3:30pm (term time only)	Bumps & Babes	BC
Wednesday	5.30pm-6.30pm	Pilates Class - book via <a href="http://www.faybpilates.co.uk">www.faybpilates.co.uk</a>	MS
Wednesday	6.45pm-7.45pm	U15 Football Club	CVC
Wednesday	7pm - 9pm	Tang Soo Do	MS
Thursday	9.30am - 11am	Messy Play (term time only)	CP
Thursday	5.45pm-6.45pm	U8 Football Club	CVC
2 <sup>nd</sup> Thursday	2.30pm	Comberton Friendship	VH
4 <sup>th</sup> Thursday (not Dec & Aug)	2.30pm - 4pm	Oasis Teas	VH
3 <sup>rd</sup> Friday	7pm (7:30pm start)	Bingo Party	VH

VH = Village Hall                      CVC = Comberton Village College  
 BC = Baptist Church                MS = Meridian School  
 CP = Comberton Playgroup

## Parish Council

Meetings are normally held on the second Wednesday of the month at 7:30pm in the Village Hall.

We welcome public attendance and the agendas and minutes can be found at <https://comberton-pc.gov.uk/decisions-meetings/agendas-and-minutes>

## Wheelie Bin Collection Dates

Thursday 30 <sup>th</sup> January	Blue
Thursday 6 <sup>th</sup> February	Black
Thursday 13 <sup>th</sup> February	Blue/Green
Thursday 20 <sup>th</sup> February	Black
Thursday 27 <sup>th</sup> February	Blue
Thursday 6 <sup>th</sup> March	Black



## Advertising Rates

	Size (w x h)	Annual (10 editions)	Single Edition
<b>Whole page</b>	122mm x 183mm	£475	£60
<b>3/5 page</b>	122mm x 109mm	£285	£36
<b>2/5 page</b>	122mm x 72mm	£190	£24
<b>1/5 page</b>	122mm x 35mm	£95	£12
<b>1/5 page</b>	60mm x 72mm	£95	£12
<b>Back page (colour)</b>	122mm x 183mm	One-off only	£90

## Comberton Contact Team

Editor and Designer                      James Gilbert                      07768 421049  
[editor@combertoncontact.org.uk](mailto:editor@combertoncontact.org.uk)                      50 South Street, CB23 7DZ

Treasurer and Advertising              Terry Coad                              01223 263264  
[treasurer@combertoncontact.org.uk](mailto:treasurer@combertoncontact.org.uk)              38 Westlands

Distribution                                      Marian Dymott                      01223 263292

Please supply copy via email in a plain text format and images in jpg, png or pdf with 300 dpi. Please send any submissions for the March magazine by 15<sup>th</sup> February 2025. Submissions will only be acknowledged if requested and this may take up to a week.

## From the Editor

I encourage you to sign this petition calling on the government to pause plans for the East West Rail Bedford - Cambridge link pending a full independent review.

It is easy to do, only requiring a name, email address and a postcode. Then all you need to do is to respond to an email confirming it is you.

Thank you to those who have already signed the petition - at time of writing there were 3340 signatures; 10,000 are required to elicit a response from the government, so please encourage your friends and contacts to sign up. They don't need to be local to have a say.

The petition (which has a deadline of 11<sup>th</sup> June 2025) can be reached via either of the following links:

<https://petition.parliament.uk/petitions/701546>

or

<https://qr.short.az/r/b5dyie4dgugpc41>

To stay up to date with the local plans please sign up as described in the Parish Council bulletin on page 15.

James Gilbert 07768 421049 [editor@combertoncontact.org.uk](mailto:editor@combertoncontact.org.uk)

## Comberton Village Website

Regular updates are available at [www.comberton.org](http://www.comberton.org)

## Local Government Contacts

Parish Council Chair

Jennifer Martin  
[jen.martin@comberton-pc.gov.uk](mailto:jen.martin@comberton-pc.gov.uk)

Parish Council Clerk

Jessie Brewer  
[clerk@comberton-pc.gov.uk](mailto:clerk@comberton-pc.gov.uk)

Comberton Parish Council  
PO Box 1549  
CAMBRIDGE DO  
CB1 0ZS

District Councillors

Ariel Cahn 01223 232186  
[cllr.cahna@scambs.gov.uk](mailto:cllr.cahna@scambs.gov.uk)

Dr Lisa Redrup 07855 324580  
[cllr.redrup@scambs.gov.uk](mailto:cllr.redrup@scambs.gov.uk)

County Councillor

Michael Atkins 07968 264637  
[michael.atkins@cambridgeshire.gov.uk](mailto:michael.atkins@cambridgeshire.gov.uk)

# Village Help Scheme

## Volunteer Drivers Schedule

To book transport please see the dates below and call the appropriate number

For the following weeks:

27 January 2025	Barbara Mitton	01223 262073
03 February 2025	Angela Donnelly	01223 263283
10 February 2025	Angela Donnelly	01223 263283
17 February 2025	Joan Wells	01223 262746
24 February 2025	Joan Wells	01223 262746
03 March 2025	Gill Redman	01223 262246

### **Please Note**

With the closure of the Butchers payments should now be made at the pub.

More drivers are **URGENTLY** required for this essential service.

For more information please contact

Mrs Gill Redman on 01223 262246

Mrs Barbara Mitton on 01223 262073



## **Comberton Luncheon Club**

28 February - Mohak Café & Indian Curry Experience, Haslingfield

28 March - George & Dragon, Elsworth

All lunches are at 12:30 pm

Please feel free to join us - just call Frances on 01223 264230

# COMBERTON SPORTS & ARTS

GREAT  
VALUE

## GYM MEMBERSHIPS



Standard Membership £32 per month or £22 per month for Concessions

**Pay up front - £320 / 220 per annum (2 months Discount)**

- \* Fitness Suite 'Fantastic new Pulse equipment'
- \* Free Weights Room
- \* Excellent range of Fitness Classes (Book online option)
- \* Free Badminton court hire for all members

**Non - members welcome on a pay & play basis**

Tel: 01223 264444

[www.combertonsa.org](http://www.combertonsa.org)



## Home Meadow Care Home

Comberton Road, Toft, CB23 2RY



Discover our warm and welcoming care home, delivering the highest standards of care with dignity and respect. Our dedicated team support physical, emotional, and social wellbeing with **residential** and **dementia care** options. There are lovely views from the home and it is surrounded by spacious gardens.



01223 632655  
[healthcarehomes.co.uk](http://healthcarehomes.co.uk)





# The Parish Church of St Mary, Comberton

In the Benefice of The Lordsbridge Team



## Men's Shed at Madingley Hall



**Wednesday  
morning  
at 11am**



### Activities

Every Wednesday at 11am - **Men's Shed** at Madingley Hall

Thursday 27th Feb at 2.30pm - **Oasis Teas** in Comberton Village Hall



### Regular Services in St Mary's Church Building

Sun 2nd Feb at 9.30am - **Holy Communion**

Sun 9th Feb at 8.00am - **BCP Holy Communion**

at 9.30am - **Holy Communion**

Sun 16th Feb at 9.30am - **Morning Worship**

Sun 23rd Feb at 8.00am - **BCP Holy Communion**

9.30am - **Holy Communion**



### On-line Services

Zoom Church: Sunday at 11am - ID: **8231 1473 640**

Tuesday Morning Prayer on Zoom at 9.30am - ID: **495 061 1016**

Wednesday Compline on Zoom at 8pm - ID: **899 215 191**



### Quiet Prayer

Our church building is usually open from  
7.30am-3pm for visits & individual prayer.

### On-line Giving

We can now accept on-line donations;  
more information on our website.



Find us on Facebook:  
St Mary's Church, Comberton

**For information about Baptisms, Weddings & Funerals,**  
please contact The Rev'd Chris Westgarth

**Associate Priest: The Rev'd Chris Westgarth**

chris.westgarth@btinternet.com

Tel: 07710 661003

**Team Curate: The Rev'd Barnabas Leeke**

barnabasleeke@lordsbridge.org

Tel: 07787 800888

<http://www.stmaryscomberton.org>

### Churchwardens:

**Michael Edwards**, 01223 262748, michael@kentings.co.uk

**Teresa Taylor**, 07717 001429, ptc.taylor@btinternet.com

# ANDREW EVANS

01954 780 999 – 01223 864335

email: [andrew@omegaclean.co.uk](mailto:andrew@omegaclean.co.uk) [www.omegaclean.co.uk](http://www.omegaclean.co.uk)  
Family Business Since 1980

- ✓ Carpet Cleaning
- ✓ Upholstery Cleaning
- ✓ Tile & Grout Cleaning
- ✓ Leather Cleaning
- ✓ Oriental Rug Cleaning
- ✓ Carpet & Fabric Protection
- ✓ Allergy Relief Treatment
- ✓ Odour Eradication
- ✓ Stain Removal



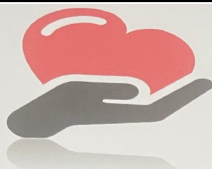
## JACKSON COX

YOUR LOCAL VILLAGE OPTICIANS

A. Saxena *MCOptom*  
OPTOMETRIST

PROFESSIONAL HIGH QUALITY EYE CARE

30a Woollards Lane | Great Shelford | CB22 5LZ  
☎ 01223 840 441 🌐 [www.jackson-cox-optician.com](http://www.jackson-cox-optician.com)



Caring iz sharing

Caring comes easy

BASED IN COMBERTON

Caring Iz Sharing

HOME CARE SERVICE

WE ARE PROUD TO OFFER A  
RANGE OF FLEXIBLE CARE  
PACKAGES.

Designed to provide our clients with carefully designed support to meet their individual needs. A commitment to our key values (compassion, dependability and positivity) means clients can look forward to a secure future in their own homes.

CONTACT DETAILS

[caringizsharing@gmail.com](mailto:caringizsharing@gmail.com) 0787 2654 293

Happy New Year 2025!

### Coming Up!

**Warm space, your space** this winter is here again at Comberton Library. Every **Wednesday: 2.30pm – 5pm**. There will be tea/coffee/cuppa soup and biscuits. A place for you to wait for an activity after school, read/borrow, use WiFi and computer access or a place to keep warm. Donations welcome.

*We thank you to the kids who finished their Christmas Treasure Hunt and received certificates; they had a great time.*

Comberton library celebrating Chinese New Year of the Snake – **Wednesday January 29<sup>th</sup>**.

In the month of **February**, Love is in the air - Look out for Valentine origami love heart book marks and there is also 'Date with a Book.'

**Festival of stories** – Monday 24<sup>th</sup> February, 10.30am – 11.30am. Mark Making Fun in the library at Comberton Library. This **event is Free** but you will need to book your place in the library.

**"Change and adapt"** is the theme for Science Week event, Friday, March 7th at Comberton Library. Families can participate in science activities.

In **April**, there's the Easter Hunt during the Easter Break more information will follow. Additionally, there will be quotations recited and children will have the chance to create and decorate their crowns starting from **April 24<sup>th</sup> - 28th**, which is Shakespeare Week.

### Weekly activities

**Knit and Natter** group continue to meet in Comberton Library, 10.30am – 11.30am January dates: 20th. February dates: 3<sup>rd</sup> and 17<sup>th</sup>. March dates: 3<sup>rd</sup> and 17<sup>th</sup>. Then every other Monday onwards.

**Newcomers** are most welcome to complete your own projects, start a new or participate in group activities. There is always tea, coffee and biscuits available.

*We are really thankful to the women from Knit and Natter who created gorgeous hats, scarves, and gloves for Jimmy's Cambridge.*

Come sing along and have fun, **Rhymetime**, 10.30am – 11.00am (except during the school holidays) for children between 0 to 4 years of age. January dates: 13<sup>th</sup> and 27<sup>th</sup>. February dates: 10<sup>th</sup> and 24<sup>th</sup>. March dates: 10<sup>th</sup> and 24<sup>th</sup>. Then every other week. Also, come and join the **First Steps Library Club**, aged 0 – 4 years. Free event.

**It's Lego Time** with Duplo. Every Saturday from 10.30am. Come and have fun using your imagination. All children must be accompanied by an adult. **This is a free event.**

### Opening hours (excluding bank holidays etc.)

Monday	10am – 1pm
Wednesday	10am – 1pm and 2.30pm – 5.30pm
Friday	2.30pm – 5.30pm
Saturday	10am – 1pm

# WWS PLUMBING & HEATING

- FULL HEATING INSTALLATION
- BOILER SERVICES
- PLUMBING & HEATING REPAIRS
- BATHROOM INSTALLATION

**RELIABLE & FRIENDLY SERVICE ■ ALL WORK UNDERTAKEN**



CALL FOR A FREE QUOTE

**01954 212134 / 07834 562532**

## ASH CROFT VETS

### MAIN SURGERY

169 St Neots Road, Hardwick, CB23 7QJ - Tel: 01954 210250

### BRANCH SURGERY

Pendrill Court, Ermine Str, Papworth, CB23 3UY - Tel: 01480 831615

Consultations by Appointment Only

[www.ashcroftvet.co.uk](http://www.ashcroftvet.co.uk)



Specialists in  
made to  
measure window  
coverings

Beautifully made and locally produced  
Curtains and Roman Blinds

Suppliers of Sanderson, William Morris,  
Harlequin, Scion, Prestigious Textiles

Roller, Vertical, Pleated, Wood, PVC and  
Aluminium Venetian Blinds

Contemporary window dressings:  
Vision/Duplex and Visage Blinds  
Plantation shutters and Awnings

Experts in home automated motorised solutions  
FREE - NO OBLIGATION QUOTES - FIND US AT

Sage Blinds & Interiors  
Phillimore Garden Centre, Cambridge Road,  
Melbourn. SG8 6EY, Tel: 01763 263399

[www.sageblinds.co.uk](http://www.sageblinds.co.uk)

Open Mon- Fri 9am-5pm & Sat 9am-1pm

**Andrina B**  
the footcare specialist

Providing expert treatment in all  
aspects of foot healthcare in  
the comfort of your own home

**Nail Cut • Callus • Athlete's Foot  
Hard Skin • Corn Removal  
Fungal Infections • Plantar Faciitis  
In-Growing Toe Nail • Orthotics  
Leg and Foot Massage**

To book your appointment call Andrina on

**07966 571 686**

or email: [andrinab@foot-care.co.uk](mailto:andrinab@foot-care.co.uk)

**[www.foot-care.co.uk](http://www.foot-care.co.uk)**

Andrina Baldock, Foot Health Practitioner, SAC Dip, FHPP FHPT  
Register for Foot Health Practitioners Member

# Comberton Parish Council Bulletin - February 2025

In this first edition of 2025, Comberton Parish Council wishes you all a Happy New Year. We hope you have had a restful and festive break and that you have a healthy and joyful year ahead.



To stay informed about the Parish Council, visit our website, attend meetings, and read this column.

These are the three means by which we communicate with residents. For issues or questions, or to work with us on one of our projects, please email the clerk.

The Endurance/retirement village planning application for 200 dwellings in Comberton was considered at a District Council Planning Meeting on 15th January 2025 . District



Councillor Cllr Atkins and Parish Councillors Cllr Marshall and Cllr Michel spoke to object to the planning application. The application was unanimously rejected by the District Council Planning Committee. The applicant can now appeal.



Visitors to our recreation ground will soon notice some changes to the long Hawthorn hedge which separates the two playing areas. This season, sections of the hedge will be laid in a traditional manner, which is to benefit the overall health of the hedge, to prevent it becoming gappy at the bottom, and to ensure it is as productive as possible with flowers and fruit. Once the laid hedge re-grows, it will be cut incrementally across its length to preserve differing habitats for wildlife.



# PEST PROBLEM?

**CALL DRE PEST CONTROL**

**01954 230708**

**07789 502556**

- Commercial & Residential
- One-off Call Outs
- Management Contracts

Cambridge & surrounding areas  
[drepestcontrol.co.uk](http://drepestcontrol.co.uk)



**Est. 1987**

## LEEWAY BUILDING SERVICES LTD

Property extensions, renovations, conversions and alterations.

All works undertaken. No job too small

Contact Tom

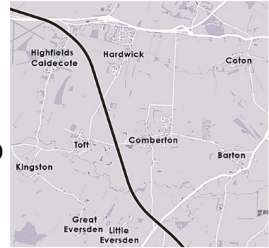
**07766553484**


[info@leewaybuildingservices.co.uk](mailto:info@leewaybuildingservices.co.uk) [www.leewaybuildingservices.co.uk](http://www.leewaybuildingservices.co.uk)



## Parish Council Bulletin (continued)

A non-statutory consultation on East West Rail closed on 24th January. Please visit [https:// eastwestrail.co.uk](https://eastwestrail.co.uk) and sign up to Cambridge Approaches updates to keep up to date with this project. We will continue sharing information via our website. A statutory consultation will take place at a later date.



 We thank all residents who have answered our Local Highway Improvements survey. We have analysed the data and are planning several improvements. We are committed to improve parking on South Street and have put aside funds to work on this project. We have also applied for County Council funds to obtain a Mobile Vehicle Activated Sign which will be moved around the village regularly to remind drivers of the local speed limits.

We send our heartfelt thanks to the Parish Council employees for all their hard work in 2024: Our village handy person Rick, our village clerk Jessie, who amongst other things organised our Christmas festivities at the pond, and our new grounds people, Neil, Ross and Andy. We would also like to extend our thanks to the Turnbulls for making it possible to switch on the Christmas tree. We truly appreciate their support.



*Cllr Claire Michel, Vice-chair*

The Parish Council meets on the 2nd Wed of each month at 7:30 pm in the Village Hall. Agendas and minutes are published on our website. Residents can attend the full meeting and the first 15 min are reserved for their comments.

**Parish Council clerk: [clerk@comberton-pc.gov.uk](mailto:clerk@comberton-pc.gov.uk)**

**Website: <https://comberton-pc.gov.uk/>**

MARK WEATHERHEAD LTD  
 Ashworth House, St Neots Road,  
 Hardwick, Cambs. CB23 7QL  
 Tel: 01954 210355  
 E Mail: sales@markweatherhead.co.uk  
 Website: www.markweatherhead.co.uk

# Mark Weatherhead



SALES



SERVICE



PARTS



WE ALSO HIRE OUT :- AERATOR, SCARIFIER & TURF CUTTER

COME AND VISIT OUR SHOWROOM AND COUNTRY STORE IN HARDWICK CB23 7QL



**FIRST POINT PROJECTS**  
 BUILDING | CARPENTRY | DECORATING

## Trusted Experts Focusing on Quality & Satisfaction

Carpentry | Small Building | Renovations | Kitchens  
 Bathrooms | Fencing | Patios | Decorating

Tel: 07725000950

Email : [info@firstpointprojects.co.uk](mailto:info@firstpointprojects.co.uk)

Website : [www.firstpointprojects.co.uk](http://www.firstpointprojects.co.uk)



*More than just a service*



Heating Plumbing Renewables Bathrooms

All Domestic & Commercial works undertaken



[www.shelfordheating.co.uk](http://www.shelfordheating.co.uk)

T: 01223 833426 E: sales@shelfordheating.co.uk

Computer Maintenance

Selecting and Installing a Computer

Repairs


Advice on Installing Home Networks

Fault Finding


For help, call me, Brian Girling,  
 on 01223 208529 (Wimpole)

E-mail [bg@moncraft.co.uk](mailto:bg@moncraft.co.uk)





# Parish Council Funding and Spending 2025-26



## **Summary**

This note is intended to make clear the funding that the Parish Council will receive from the Parish precept in the 2025-26 tax year. In short: the charge in the coming tax year will be approximately £78 (for a band 'D' household).

## **Source of funds**

The Parish Council has a mandate to represent local people, deliver certain services and improve the quality of life in Comberton. Where projects require funding, there are three common sources:

- The 'parish precept' that is charged via council tax bills;
- grants that the Parish Council applies for;
- and occasional funds levied from developers required to contribute to specific infrastructure projects (so-called 'section 106' monies).

## **Use of funds**

The Parish Council has planned to support a series of recurring and one-off activities in 2025-26. These include:

- Recurring: Maintenance of trees, grass verges, hedges, pathways, and recreation grounds. Upkeep and security of various buildings and equipment including the village hall, sports pavilion, and playground equipment.
- Support to local initiatives: Comberton Shed group (new), the local Playgroup, EDGE, bowls club, St Mary's Church (support for public pathway maintenance)

# HomeTechWorks

"helping you make the most of your digital home technology"



Need help with your computer?  
Or advice on a new one?



Does your phone or tablet work  
as well as it should?



Want better Wifi signal  
throughout your house?



Would you like all your photos  
organised and backed up?

Call or email Dan for a no obligation chat.  
No job too small. Testimonials online. NOTE new phone no.



[www.hometechworks.co.uk](http://www.hometechworks.co.uk)

01223 973100

[enquiry@hometechworks.co.uk](mailto:enquiry@hometechworks.co.uk)



## Cambridge Appliance Repairs

ARE YOU HAVING PROBLEMS WITH YOUR APPLIANCES?

Looking after your appliances should be just as important as  
looking after your car, house or mobile phone

We have over 35 years' experience providing a professional  
domestic and commercial appliance repair service.

**Telephone 01223 426222**

## MELBOURN FLOORING AND INTERIORS LIMITED

Phillimore Garden Centre, Cambridge Rd., Melbourn, SG8 6EY

Tel :01763 262413

### FLOORING

- Vast Range of Carpets from all leading manufacturers
- Real Wood, Laminates, Vinyl's, Karndean, Amtico and Project Floors
- Safety Flooring
- Free Estimates. Fitting by experienced staff

Visit our LARGE SHOWROOM with Ample Free Parking  
9 to 5, Monday to Friday, 9 to 4 Saturday

**OR**

Call the number above to speak to one of our friendly staff

## Parish Council Funding and Spending 2025-26 (continued)

- One-off : hedge laying at the recreation grounds; resurfacing the tennis courts, installation of cricket nets, installation of a 'pump' track, investigation of road improvements including parking, village events (summer and Christmas), overhaul of the village hall lights.

### **Comberton Parish precept 2025-26**

In the last tax year (2024-25) the parish precept charge was approximately £71 for a house classified as 'band D' (slightly less for bands A-C, slightly more for bands E-H).

In the coming tax year (2025-26) the parish precept will increase to approximately £78 for a band D household. This will raise approximately £70,000 towards parish works.

The decision to increase the annual charge by (on average) £7 has been made with careful consideration and we wish to be transparent about the factors influencing it:

1. Our precept charge is low by national and local standards: The national average charge in England in 2024-25 was £86, in Bassingbourn it was £110 and in Harston it was £90.
2. Our costs have increased: The village sees the same rising costs as we all do - services, wages and purchases have gone up (and will continue to do so this year)

### **Closing remark**

The Parish Council's approach in preparing this budget has been to balance enhancements to our village across a deliberately broad range of activities with affordability. If you wish to find out more, please consider attending a parish council meeting held once per month. Details of larger projects are often described on the Parish Council website.

**Parish Council clerk: [clerk@comberton-pc.gov.uk](mailto:clerk@comberton-pc.gov.uk)**

**Website: <https://comberton-pc.gov.uk/>**

## OAP Skips - cheap skip hire!



Based in Dry Drayton but we cover Bedfordshire, Cambridgeshire & Hertfordshire. Quick turnaround.

One size only (4 yard) £150 per skip  
Call Gary today on 07706 032544

## Rothwell's Carpet Cleaning

### Carpet Cleaning Upholstery & Rug Cleaning

*A few points that make us stand out:*  
In business since 1993

We're an honest local family firm  
Our large truck mounted machines mean more cleaning & drying power for the best results possible.

We will move the furniture.  
100% satisfaction or it's FREE.

*Call Oliver and Max Campbell*

**01223 832 928 [www.Rothwells.biz](http://www.Rothwells.biz)**

## DAVID TURNER LEGAL SERVICES



Making or Updating  
your Will



Lasting Powers  
of Attorney



Probate & Estate  
Administration



Court of  
Protection



We have been advising clients for over 30 years and pride ourselves on our friendly personal approach whilst providing an efficient and professional service.

If we can be of help, do call in to see us. If you prefer; home visits can easily be arranged.



The Commercial Centre  
6a Green End, Comberton  
CB23 7DY



01223 264 187



[david@dtlegalservices.co.uk](mailto:david@dtlegalservices.co.uk)

# **COMBERTON OPERA**

**At the Village Hall**



## **Umberto Giordano's Andrea Chénier**

**Jonas Kaufmann**

**Eve-Maria Westbroek**

**Željko Lučić**

**Royal Opera Chorus and Orchestra**

**Recorded at Covent Garden in 2015**

**Wednesday 5<sup>th</sup> February 2025**

**at COMBERTON VILLAGE HALL**

**Doors open 6.30pm for a 7.00pm start**

**Interval with refreshments**

**Tickets £5 on the door**

**Further information: [comberton.opera@gmail.com](mailto:comberton.opera@gmail.com)**

Sponsored by Comberton Village Institute Trust



## Domestic Oil Fired Heating Services

**\*Annual Oil Boiler Servicing \*Boiler Breakdown Repairs**

**\*Oil Tank Replacements \*Landlord Certificates**

**\*Service & Repair of Most AGA Cookers**

**\*Family Business With More Than 45 Years Experience**

# 01223 207901



**info@bartonoilburnerservices.co.uk**

**BROADWAY HOUSE, 149-151 ST NEOTS ROAD, HARDWICK. CB23 7QJ**



## BRIAR SECURITY SYSTEMS LTD

- Intruder Alarm Systems
- CCTV
- Access control
- Locks, grilles & safes
- Automated Gates
- 24/7 callout 365 days a year
- Free Survey



Nixon's Hall, 1 Chapel Road, Gt Eversden, Cambridge CB23 1HP

T:01223262728 F:01223263349

email: sales@briarsecurity.co.uk      www.briarsecurity.co.uk

## S E DAVEY PLASTERING

### Plastering, Floor screeding & Coving

TEL: 01954210941- MOB: 07711541799

sedaveyplastering@outlook.com

# Comberton Ramblers

**50 Years Old 1974 - 2024**

## **Join our friendly group for wonderful walks**

Comberton Ramblers walk alternative Sundays between 5-7 miles.

The original concept of the club hasn't changed since 1974, it is to encourage people to take a walk in their local countryside, enjoy a social chat, and at the same time learn a little about the local flora and fauna, but all in a friendly and informal atmosphere.

You are welcome to join us on any 2 of our walks to see if our group is for you. Then, once you have enjoyed the views, fun, exhilaration, it is just a case of becoming a member.

Annual membership membership fee is £10.00 per person.

No dogs are allowed except assistance dogs.

For further information please contact me by emailing: [stella.hardwicke2274@hotmail.com](mailto:stella.hardwicke2274@hotmail.com) or telephoning 01954 210049, mobile 07930 951703.

Thank you for reading this.

Stella – Secretary of the Comberton Ramblers  
<https://combertonramblers.org.uk>

# Comberton Antiquarian Society

The next meeting will be on Tuesday 25th February at 8pm in the Village Hall when Cynan Ellis-Evans will give a talk entitled

## **The Antarctic Voyage of the Scotia**

Dr. Cynan Ellis-Evans has extensive arctic and antarctic experience. He is a polar microbiologist, and has a background of over two decades of research on aquatic microbial ecology and biogeochemistry in both Polar Regions.

Scotia was a barque that was built in 1872. as the Norwegian whaler Hekla. She was purchased in 1902 and refitted as a research vessel for use by the Scottish National Antarctic Expedition.

# JASON KIRBY

## Professional Painting & Decorating Ltd

All Aspects of Internal & External Decorating  
Period, Residential & Commercial Properties.

Wallpaper & Mural Install

Kitchen Cabinet & Furniture Re-Sprays.

Floor Sanding & Restoration.

City & Guilds, NVQ Qualified.

Service, Quality & Reliability.



01954 211775

[www.jasonkirbyltd.co.uk](http://www.jasonkirbyltd.co.uk)



### Brand new purpose built site

Flexible options for home and business  
Monitored CCTV, gate entry by key fob  
Easy access for removal company lorries  
Entry from 06.00 to 22.00, 7 days a week  
Insulated, damp free containers owned from new and  
carefully maintained  
Over 10 years of experience  
Friendly and family run

Visit our website: [www.lawstorage.co.uk](http://www.lawstorage.co.uk)  
Call us: 01223 874629  
Email us: [paul@lawstorage.co.uk](mailto:paul@lawstorage.co.uk)

**Please note**, we have moved to:  
Butts Farm, Malton Road, Orwell, SG8 5QR



Let us lighten your load



## STEAMROLLER IRONING SERVICE



Free pickup and delivery

**Price 1 lb = £2.00 (min £10.00)**

Non-smoking environment

07742 319631 / 01954 210672



## HARVEY

### PLUMBING & HEATING

- Oil boiler service / repair / install
- Central heating systems
- Power flushing
- Hot water cylinders
- Bathrooms & showers
- General plumbing

Call Darren

01223 262676

07947232543





# Meridian Primary School

Learning for Life; Striving for Excellence

Resilience | Kindness | Community | Respect | Curiosity

## To the Comberton Community,

Happy 2025! We are thrilled to start the new year with a new Headteacher, Miss Becky Snelling, who takes over from Mrs Summerfield. We would like to extend our heartfelt thanks to Mrs Summerfield for her excellent work and support during a period of transition for the school. As Miss Snelling steps into her new role, she will build on the strong foundations established last term, and we look forward to the exciting next steps in our school's journey.

As we move into this new year, one of our focuses will be on enhancing sustainability and improving the school environment. We're excited to share that we have 150 trees ready to be planted, which will help to transform our field into a greener space, while also creating new habitats for wildlife. To help us with our environment improvements, we will be holding a Grounds Day in late spring—an opportunity for children, parents and community members to come and lend a hand. Watch this space for more details, and we hope to see as many volunteers as possible! Additionally, our dedicated governors have worked hard to secure a new Air Source Heat Pump project, and we're thrilled that this work will be kicking off in the next few months. This is a significant step toward making our school more energy-efficient and environmentally friendly.

We continue our involvement in the CB23 schools network, collaborating on policy design and sharing best practice. This network also provides our children with valuable opportunities to participate in events and competitions. At the end of January, we are proud to have four finalists who will take part in the CB23 Public Speaking Grand Final at Peterhouse College in Cambridge. We wish them the best of luck and are incredibly proud of their bravery.

Are you interested in volunteering in school? We are always grateful for the support of our school community. If you have the time and capacity to volunteer, we would love to hear from you! Whether it's helping with reading, assisting in administrative tasks, or supporting our extracurricular clubs, your involvement would make a real difference. If you are interested in volunteering, please get in touch with the school office.

Keep an eye out for our Year 6 children taking part in Bikeability over the next couple of weeks! They will be learning important road safety skills, including the key rules of the road, how to signal and how to manoeuvre safely on their bikes. As they gain valuable experience, please drive slowly and carefully if you're passing by. For many of them, this is their first time cycling on the road, and it can be a little nerve-racking. Your patience and consideration are greatly appreciated as they practice these essential skills. Thank you for your support in helping our children stay safe and confident on the road!

Kind regards

**Miss Becky Snelling** and  
**Headteacher**

**Everyone**  
**at Meridian**



Better Home Care works with customers and their families who require care in their own homes

We build personalised packages around your homecare needs

Better Home Care is registered and regulated by the CQC (Care Quality Commission) and currently rated as "GOOD" all-round. We have also been nominated for the 2020 Great British Care Awards Regional round in the East of England.

Recruitment - We are currently looking for local care workers to cover Comberton and the surrounding Villages.

Please get in touch - 01223 262669 (Fax 01223 262 670)  
info@betterhomecare.co.uk  
Barnwell House, Barnwell Drive, Cambridge, CB5 8UU



*Open seven days*  
*Family and dog friendly*  
*Free Wi-Fi*

**Food served:**

**DAYTIME**

Cafe: **Wed, Thur, Fri & Sat**  
9.30 am-2.30pm

**EVENING**

**Tuesdays** 4.30-8pm  
The Cambridge Fish Bar

**Thursdays** 5-8pm  
Purple Pepper

**Fridays and Saturdays** 5-8pm  
Box meals with light bite options

*Plus: Steak and Honour - last Sat of the month*

*Three Horseshoes Comberton*

# Victoria Rose Artisan Bakery

Artisanal handmade sourdoughs, specialty breads, and pastries. All of our offerings are fresh baked made to order. Ready for Pickup or Delivery times can be selected when orders are placed. Local delivery available to Comberton, Hardwick, Cambourne, Toft and surrounding areas!

[www.victoriarosebakery.com](http://www.victoriarosebakery.com)

[info@victoriarosebakery.com](mailto:info@victoriarosebakery.com)



[victoriaroseartisanbakery](https://www.facebook.com/victoriaroseartisanbakery)



## THE PLUMBING COMPANY



**Boiler & Heating Installations • Gas & Oil  
Bathrooms & Kitchens • Power Flushing  
Underfloor Heating • Solar & Heat Pumps**



**New Build or Refurbishment • Domestic & Commercial  
For a Friendly & Efficient Plumbing Company Call Jason**

**e-mail; [jason@theplumbingcompany.com](mailto:jason@theplumbingcompany.com)**

**38 South Street, Comberton, Cambridge CB23 7DZ**

**T: 01223 262100 M: 07802 536551**



# JASON MOORE

## CARPENTRY & BUILDING Ltd

Extensions, Loft Conversions, New Build  
UPVC Fascia/Soffits, UPVC Windows/Doors, Flooring  
Kitchen Refurbishments, Flat Roof Replacements

*Free estimates* Telephone. **07939 244453**

Call for a friendly and reliable service

E-mail: [jmoorecarpentry@sky.com](mailto:jmoorecarpentry@sky.com)

Green End, Comberton, Cambs



All aspects of Carpentry & Building  
with over 30 years experience  
City and Guilds qualified, full public liability insurance cover



Christopher  
THE LOCKSMITH

### ARE YOUR LOCKS BEHAVING BADLY?

We Value Old Fashioned Customer Service  
A Local Trusted Family Business Since 1989

 Specialist in UPVC & Wooden Doors

 No Call Out Charge

 No Fix No Fee

 All Work Fully Guaranteed

 10% Senior Citizen Discount



For More Advice & Help  
Call Christopher:

**07772 111 222**

[www.christopherthelocksmith.co.uk](http://www.christopherthelocksmith.co.uk)

## CHIMNEY SWEEP



07919 888990

Professional and insured  
Certificates issued  
Advice given and problems  
solved

[edcleansweep@gmail.com](mailto:edcleansweep@gmail.com)



Clean Sweep,  
based in  
Haslingfield

## C & C BLINDS

SPECIALISTS IN BLINDS ANY SIZE ANY COLOUR

VERTICAL BLINDS / ROLLER BLINDS / VENETIAN BLINDS / REPAIRS

ROMAN BLINDS / VELUX BLINDS / AWNINGS

FREE ESTIMATES

Tel:01223 211171 Mobile: 07761 262070

# December Challenge Solution

SPONSORED BY COMBERTON CO-OP

DO your best.....

**Non-Musical** MUSCAVADO, BASTINADO, INCOMMUNICADO, DESPERADO, CRESCENDO, LIDO, ADO, AFFICIANADO, AMONTILLADO, COMMANDO, BRAVADO, BUSHIDO, SPEEDO, INNUENDO, TORPEDO, TUXEDO, HAIRDO, OUTDO, TORNADO, TESTUDO, PSEUDO, WEIRDO, RONDO, AVOCADO, UNDERDO, LIBIDO, ESCUDO, KENDO, UNDO, OVERDO, TOLEDO, UNDO, JUDO, REDO, DODO, DADO.

**Musical** DIMINUENDO, SCHERZENDO, TREMOLANDO, ACCELERANDO, LENTANDO, GLISSANDO, DECELERANDO, RONDO, RAPIDO, RALLENTANDO, FORZANDO, ALLARGANDO, STRINGENDO, AFFRETANDO.

The winner is **Doug Chadwick** of Morris Close.

## Wildlife Survey

The Parish Council would like to thank all those who returned the wildlife survey in December. If you have still have the questionnaire there is time to respond. Please put completed forms in the Village Hall postbox or photograph a completed form for return by email to [combertonnaturenet@outlook.com](mailto:combertonnaturenet@outlook.com).



## Quality Bespoke Secure Storage



Easy to open & fast to access.  
High security with PIN codes,  
megapixel CCTV cameras &  
individual room alarms.  
Choose the size you really  
need. Store just about  
anything, for any length of stay  
Clean, dry & condensation  
free. Viewings by appointment.

### MoreSpace

Manor Farm, Graveley, PE19 6PH.  
Mention SPC22 to receive £5  
discount on your first month.



01480 830130 [morespacestorage.co.uk](http://morespacestorage.co.uk)

RedLocks  
Locksmiths



### Your Local Independent Locksmith

- \* Fast & friendly reliable service \* Police-vetted
- \* No hidden extras \* FREE quotes
- \* Emergency locksmith \* No call out fee
- All worked guaranteed

### SERVICING CAMBRIDGE AND SURROUNDING AREAS

Available 24 hours a day - Student & OAP discount

freephone\_ 0800 8 247 047 t\_ 01954 202818  
m\_ 07784 240 970 w\_ [www.redlocks.co.uk](http://www.redlocks.co.uk) e\_ [info@redlocks.co.uk](mailto:info@redlocks.co.uk)



MOT



Air Conditioning



Servicing



Tyres



Diagnostics



Repairs

## Free Collection & Delivery Service Available



## Book your MOT online



Email: [contact@agmotors.net](mailto:contact@agmotors.net)  
Unit A5 Atria Court | Papworth Everard  
Papworth Business Park | Cambridge | CB23 3GY

**01480 831807**  
[www.agmotors.net](http://www.agmotors.net)



@AGMOTORS\_PAP



@AGMOTORS\_NET

# Comberton Allotments & Gardens Association

## DATES FOR YOUR 2025 DIARY

Our first event of the new season will be the Spring Plant Sale in May where we hope to sell you lots of fine plants to nurture and then perhaps to exhibit in the Autumn Show! The Sale will again be on a Sunday morning and in the Village Hall.

Our full diary is set out below:-

**Spring Plant Sale** – Sunday 11<sup>th</sup> May 10.30 am – Village Hall

**Summer Barbecue** – Saturday 12<sup>th</sup> July 6.00pm – Long Road Allotments

**Autumn Show** – Saturday 13<sup>th</sup> September - Meridian School

**Annual General Meeting** – Thursday 20<sup>th</sup> November 7.30pm – Village Hall

**Best Kept Allotment** – Our policy is to alternate the award between the two allotment sites, so this year the trophy will be awarded to the Best Kept Allotment on the Long Road patch.

Robin Worship; CAGA Secretary ([robin.worship7@gmail.com](mailto:robin.worship7@gmail.com))



# Plumbing

*Ian Stonebridge*

**Your local plumber**

Friendly, reliable service

No job too small

Mob: 07866 278497

Tel: 01223 263586

## **BLADES FENCING & GARDEN SERVICES**

ALL WOODEN FENCING INCL  
NEW/ REPLACEMENT/ REPAIRS/  
PRESERVATIVES  
HEDGE CUTTING & REDUCTION/  
REMOVAL  
SHRUB-SHAPING-REDUCTION-  
REMOVAL

JET WASHING OF PAVING

Licensed Chemical Weed & Pest  
Control Operatives

Registered waste carrier & Full Public  
Liability Insurance

www.bladesgardenservices.co.uk  
andy@bladesgardenservices.co.uk

Tel: Mobile 07939 114337

**CAMBRIDGE & ELY  
FINANCIAL SERVICES**

## Do you need financial advice?

Mrs Naz Miller is a financial adviser with over 30 years experience in the finance industry. Now living in Chesterton, Naz offers a local, friendly and worthwhile financial advice service.

Contact her on 07496 488090 or  
email [Nusrat.miller@sipp.co.uk](mailto:Nusrat.miller@sipp.co.uk)

*Cambridge and Ely Financial Services is an Appointed Representative of and represents only St. James's Place Wealth Management plc (which is authorised and regulated by the Financial Conduct Authority) for the purpose of advising solely on the group's wealth management products and services, more details of which are set out on the group's website <http://www.sjp.co.uk/products>.*

*The St. James's Place Partnership and the titles 'Partner' and 'Partner Practice' are marketing terms used to describe St. James's Place representatives*

**AIP Approved 12/02/2024**







Comberton Twinning Association would like to invite you to a

## **SWISS CHEESE FONDUE NIGHT**

**on Saturday March 15<sup>th</sup> 2025**



In Comberton Village Hall.

Hall doors open from 7.00pm

Includes raffle and a simple Quiz.

Please book a table in advance for you and your friends (tables of up to 6/8 people) and enjoy a home-made **Swiss cheese fondue** plus nibbles/starter and dessert (last bookings by 10th March please).

Bring your own drinks/glasses.

Tickets are £15 per adult, £9 for children age 13 and under.

Tickets available from :

Liz Bland 07889 271166 [chair@combertontwinning.org.uk](mailto:chair@combertontwinning.org.uk) (Comberton)

**All welcome: existing members, new and potential members and anyone who likes a cheese fondue.**

The purpose of this event is to raise funds for our visits to, and to receive visits from, Le Vaudreuil, near Rouen in Normandy.

# Oakes and Watson Tree Surgery and Consultancy and Peter Oakes and Daughter Tree Surgery



Due to my father semi retiring in October 2017 my husband and I have continued the business that he set up some 25 years ago by combining it with our own.

It is a pleasure and an honour to continue to offer top quality tree care in and around the area where my husband and I both grew up.

## **ARBORICULTURE AT ITS BEST.**

At Oakes and Watson we pride ourselves in providing professional, competent and complete services in all aspects of tree surgery and care. We have 19 years experience in top quality.

Tree care at extremely competitive prices.

Here at Oakes and Watson we believe that experience and qualifications come hand in hand so we are fully qualified, competent and insured in the job we both love.



## **Oakes and Watson**

Cert ab L2, DIP Arb L4 (ABC), TechArborA, CS Certified

### **Our Services**

All Aspects of Tree Surgery undertaken  
Tree Removal, Crown Raising, Reductions, Cable  
Installation, Pollards, Hedge Cutting, Topping,  
Tree Planting, Thinning, Tree Reports/  
Inspections, Fencing, Formative pruning

**Woodchips and Logs always available.**

01353 968287 [www.oakesandwatson.com](http://www.oakesandwatson.com)

07885377682 [arb@oakesandwatson.com](mailto:arb@oakesandwatson.com)

# February Challenge

## Sponsored by the Comberton Co-Op

Each of the following cities, towns etc can be slotted into one the 'frames' shown below.

RIGA PARIS HILO HOVE CALI OSLO ERIE DISS DEAL  
RENO MESA IVER NOME ETON HALE INCE LIMA ROME  
BERN AGRA

Example: Rio can be found inside a brioche.

PATISS..... S	C.....CTIC
IN..... OLUBLE	W..... BONE
S.....LHEAD	P.....TION
SH.....I NG	CA..... ET
AN..... M	IR..... TE
P..... THUIS.	P.....SOPHER
PAR.....N	CA..... ON
P..... RS	ASTRO..... R
J ..... S	I..... IST
S.....NG	CZECH..... VAKIA

An easy one to start the new year.....

Entries to the store please no later than the 14th February. First correct entry out of the hat wins a prize likely to continue in the vein of Christmas's excesses. Sounds good to me !

Entries please to CO-OP store no later than 14<sup>th</sup> January 2025 please.



# FOXCOTTE

TIMBER / BUILDING / DIY CENTRE

CROWN PAINT AGGREGATES TIMBER PAVING

**FIREWOOD**  
NOW IN STOCK -  
CALL 01223 263 702  
TO ORDER

**STOCKING  
FILLERS FOR D.I.Y  
ENTHUSIASTS**

MOWER SERVICES HAND TOOLS TREE SURGERY



**OPEN TO  
TRADE &  
PUBLIC IN  
BARTON**

Monday-Friday 7.30am-5pm Saturday 8am-1pm  
Foxcotte, Comberton Road, Barton, Cambridge CB23 7BA

[www.foxcottecambridge.com](http://www.foxcottecambridge.com)

# Apples raise funds for ACT

Thank you from ACT (Addenbrookes Charitable Trust) to those who donated £42 for the Apples (Bramley, Cox, Russet & John O-Gold) outside Meadowside, Swaynes Lane this Autumn.

Jane R Hughes Volunteer CUH

## Library at Home service

Did you know that Cambridgeshire Libraries offer a free Library at Home service to readers of any age who find it difficult to get to the library due to disability, illness or caring responsibilities?

A local volunteer can visit monthly at a mutually convenient time, bringing library books and audiobooks chosen according to each reader's preference, and have a friendly chat if you'd like.

For more information about becoming a Library at Home customer, or volunteer, please ask at the library, call 0345 045 5225, email [volunteers@cambridgeshire.gov.uk](mailto:volunteers@cambridgeshire.gov.uk) or visit our website <https://www.cambridgeshire.gov.uk/residents/libraries-leisure-culture/libraries/advice-and-support/library-at-home-service>



# Comberton Village Hall Lettings Charges

	Private Individuals		Community Groups *		Community Commercial	
	Comberton Residents	Non-Residents	Affiliated	Non-Affiliated	Local/Non-Franchised	Non-Local/Franchised
<b>SESSION</b>	Main Hall		Main Hall		Main Hall	
Daytime	£25	£35	£20	£30	£40	£45
Evenings (except Saturday)	£40	£50	£20 *	£30 *	£40	£50
Saturday eve.	£70	£85	£20 *	£30 *	£145 *	£165
	Meeting Room		Meeting Room		Meeting Room	
All sessions	£17.50	£22.50	£17.50	£22.50	£30	£32.50
	Community Room		Community Room		Community Room	
All sessions	£15	£20	£15	£20	£25	£27.50

Unless otherwise stated, charges are per session. Sessions are 9am to 1pm, 2pm to 5:30pm and 6pm to 10:30pm (midnight on Fri/Sat/Sun).

A refundable deposit of £50 is required at the time of booking.

Prices for commercial lettings and weddings are available on request.

\*Additional information for groups:

- Affiliated Community groups holding evening group social or fundraising events will be charged the residents evening rates. Non-affiliated groups holding similar events will be charged the non-residents evening rates. **Local/Non-franchised Community Commercial lettings can be reduced from £145 to £70 at the discretion of the Trustees, if the event is for a suitable charity. Groups should write to the Lettings Secretary with their request, including information on the charity, and this will be considered by the Trustees.**
- Groups working with children and/or vulnerable adults will need to have child protection and vulnerable adult policies & procedures in place
- Annual affiliation fee of £10 is due on 1<sup>st</sup> January.

More information, including hall availability, can be found at [www.combertonvillagehall.org](http://www.combertonvillagehall.org)

To make a booking contact the Village Hall Administrator, Janice Sutton at [combertonvillagehall@gmail.com](mailto:combertonvillagehall@gmail.com) or on 07435 324408 (9am to 9pm). Please note that this is a part-time role carried out around my job. If I am unable to answer your call please leave a message and i will phone you back, or send me an email.



The  
Form  
Practice

## DISCOVER THE BENEFITS OF PELVIPOWER TECHNOLOGY

At the Form Practice, we make use of the latest healing technology to speed healing and support recovery.

Pelvipower is a non-invasive, neuro-muscular training delivered via a magnetic field. It improves the strength and function of the pelvic floor muscles. Benefits include:

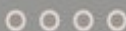
- Boosted female vitality
- Boosted male vitality
- Relief from back pain
- Support for postnatal recovery
- Relief from incontinence
- Increased core strength and balance



BOOK NOW



[www.theformpractice.com](http://www.theformpractice.com)  
[info@theformpractice.com](mailto:info@theformpractice.com)  
01954 214473



Main Street  
Hardwick  
CB23 7QS



# BLUE HOUSE Computer Help

SPEED UP, FIX UP, OR UPGRADE YOUR COMPUTERS



**WE CAN HELP YOU WITH  
COMPUTER RELATED PROBLEMS**  
AROUND YOUR HOME OR HOME OFFICE

## HOW WE CAN HELP



- Fixing Windows Startup Problems
- More Space on your Computer
- Faster Computer Speeds
- Transfer Apps & Files to New Computers
- Setting Up & Repairing Networks
- Fixing Wi-Fi Dead Spots
- Sync all your Devices around the Home
- Virus & Malware Clean Up
- General Maintenance
- Optimisation & Upgrade Services

## WHY PEOPLE LOVE WORKING WITH US

We are **meticulous**, friendly and tidy up after our work

You are safe with our **100 day guarantee**

You are **protected** by our professional indemnity and public liability cover

We can work either **in your home or remotely**

We can **loan you a laptop** while we work on your computer



## BOOST YOUR SPEED!

We can make your computers work even better and faster than when they were brand new!

TO GET HELP NOW, CALL MICHAEL ON

**01223 85 30 20**

hello@bluehouse.help · www.bluehouse.help

We get 5 star reviews on

★★★★★ Google

Blue House Computer Help,  
Cambridge Road, Oakington

DON'T NEED HELP AT THE MOMENT? SAVE ME FOR LATER, JUST IN CASE!