

# COMBERTON CONTACT

## JUNE 2026



COMBERTON PARISH COUNCIL  
PRESENTS



### *Bands in the Park*

11TH JULY 2026

LIVE MUSIC - PUB TENT -  
FOOD VANS

#### LINEUP

**CVC BIG BAND, HENDRICKS 5 (JAZZ), FIRECREST (CEILIDH),  
EMPERORS OF THE KNOWN UNIVERSE (ROCK), BAREFOOT DJS  
PLUS FEATURED LOCAL ACTS - ACOUSTIC BRUCE & AIDAN  
PETRE**

#### FOOD & DRINK

**THE THREE HORSESHOES PUB  
LOCAL CHURCHES - TEA AND CAKES  
LA FARINA SANTA - PIZZA  
COMBERTON GRILL - BURGERS AND KEBABS  
JB ICES - ICECREAMS  
THE REPUBLIC OF GOOFY - FRIED CHICKEN**

**COMBERTON  
RECREATION GROUND,  
HINES LANE**

**4PM - 11PM**

[HTTPS://COMBERTON-PC.GOV.UK/BANDS-IN-THE-PARK](https://comberton-pc.gov.uk/bands-in-the-park)

## USEFUL TELEPHONE NUMBERS

### COMBERTON SURGERY

58 Green End, Comberton, CB23 7DY

01223 262500

#### Opening times Monday to Friday

Surgery 8:00 - 12:30 & 13:30 - 18:00

Dispensary 8:00 -12:30 & 14:00 - 18:00

Prescriptions can be collected outside of opening hours by signing up to use our Pharmaself machine at Comberton (see website for details)

[www.combertonandeversdensurgery.nhs.uk](http://www.combertonandeversdensurgery.nhs.uk)

### EVERSDEN SURGERY

33 Harlton Road, Little Eversden, CB23 1HB

01223 262579

#### Opening times Monday to Friday

Surgery 8:00 - 12:30 & 13:30 - 18:00

Dispensary 8:00 -12:30 & 14:00 - 18:00

#### Phones at both surgeries go to night service at 18:00

Repeat prescription requests will only be taken over the phone for housebound patients.

**BOURN SURGERY**      **01954 719313**

[bourne.surgery@nhs.net](mailto:bourne.surgery@nhs.net)

<b>Age Concern</b> Cambridge Information & Advice Line	<b>01354 696677</b>
<b>Apple Tree Dentist</b> 1-3 West Street, Comberton	<b>262838</b>
<b>Ash Croft Veterinary Surgery</b> 169 St Neots Rd, Hardwick	<b>01954 210250</b>
<b>Baptist Church</b> Church Office	<b>264707</b>
<b>Benefits Agency</b> Chesterton Road, Cambridge	<b>545200</b>
<b>Comberton Catholics</b> (Fr John Minh)	<b>832397</b>
<b>Comberton Library</b>	<b>0345 045 5225</b>
<b>Comberton Playgroup</b>	<b>262373</b>
<b>Comberton Village College</b>	<b>262503</b>
Adult Education	<b>264721</b>
<b>Cambridge Water Emergencies</b>	<b>01223 706050</b>
<b>Anglia Water Sewerage Emergencies</b>	<b>03457 145 145</b>
<b>Environmental Health Services</b> (South Cambs)	<b>03450 450500</b>
<b>Meridian Primary School</b>	<b>262423</b>
<b>Nursery Way Sheltered Housing</b>	<b>264434</b>
<b>Parkside Police Station</b>	<b>01480 456111</b>
<b>Samaritans</b>	<b>364455</b>
<b>Social Services</b>	<b>264466</b>
(emergency out-of-hours)	<b>01733 561370</b>
<b>St Mary's Church</b> (Associate Priest Chris Westgarth)	<b>07710 661003</b>
<b>Street Light Failure reporting helpline</b>	<b>01954 233330</b>
<b>Village Help Scheme</b> (Chairman Barbara Mitton), See panel on page 7 for transport bookings	<b>262073</b>
<b>Wood Green Animal Shelter</b>	<b>01480 830014</b>
Stray dogs (South Cambs DC)	<b>443000</b>

# Contents

Regular dates for your diary	4
Comberton Contact Team	5
Wheelie Bin Collection Dates	5
Parish Council	5
Advertising Rates	5
From the Editor	6
Local Government Contacts	6
Comberton Village Website	6
Village Help Scheme	7
Comberton Bowls Club	11
June's Health Coach Corner	13
Comberton Cinema	15
Bands-in-the-Park is Nearly Here!	17
May Challenge Solution	19
Comberton Friendship Club	19
Comberton Allotments & Gardens Association	21
Volunteers Needed - Help Run Our Local Brownie Unit	21
June Challenge	23
Comberton WI	23
Comberton Opera	27
Out and About - Linton	29
Coton Garden Club	29
Parish Council News	31
Comberton Heritage Society	37
Comberton Players Auditions	37
Comberton Village Hall Lettings Charges	38



**SPACE ACADEMY**

**Holiday Club**  
**Mon 20 - Fri 24 July**  
**10am-12.30pm**  
**Rec - Year 6**

Free

Booking essential  
[www.c-b-c.org.uk](http://www.c-b-c.org.uk)  
Comberton Baptist Church



## Parish Council

Meetings are normally held on the second Wednesday of the month at 7:30pm in the Village Hall.

We welcome public attendance and the agendas and minutes can be found at <https://comberton-pc.gov.uk/decisions-meetings/agendas-and-minutes>

## Wheelie Bin Collection Dates

Thursday 28 <sup>th</sup> May	Black
Thursday 4 <sup>th</sup> June	Blue & Green
Thursday 11 <sup>th</sup> June	Black
Thursday 18 <sup>th</sup> June	Blue & Green
Thursday 25 <sup>th</sup> June	Black
Thursday 2 <sup>nd</sup> July	Blue & Green



## Advertising Rates

	Size (w x h)	Annual (10 editions)	Single Edition
<b>Whole page</b>	122mm x 183mm	£475	£60
<b>3/5 page</b>	122mm x 109mm	£285	£36
<b>2/5 page</b>	122mm x 72mm	£190	£24
<b>1/5 page</b>	122mm x 35mm	£95	£12
<b>1/5 page</b>	60mm x 72mm	£95	£12
<b>Back page (colour)</b>	122mm x 183mm	One-off only	£90

## Comberton Contact Team

Editor and Designer James Gilbert 07768 421049  
[editor@combertoncontact.org.uk](mailto:editor@combertoncontact.org.uk) 50 South Street, CB23 7DZ

Treasurer and Advertising Terry Coad 01223 263264  
[treasurer@combertoncontact.org.uk](mailto:treasurer@combertoncontact.org.uk) 38 Westlands

Distribution Marian Dymott 01223 263292

Please supply copy via email in a plain text format and images in jpg, png or pdf with 300 dpi. Please send any submissions for the July/August magazine by 15<sup>th</sup> June 2026. Submissions will only be acknowledged if requested and this may take up to a week.

**The St Mary's Hardship Fund** is available to offer small short-term, one-off support to individuals or families experiencing financial difficulty or an unexpected crisis. If you feel you may benefit from help, you are encouraged to approach Revd Chris Westgarth in confidence for an informal conversation about your circumstances and the support that may be available. All enquiries will be treated sensitively and discreetly.

*St Mary's Hardship Fund is made possible because of the generosity of others... if you would like to support this - please contact the church ([www.stmaryscomberton.org/contact.html](http://www.stmaryscomberton.org/contact.html))*

## From the Editor

I had plenty of material for this edition - thank you to all our contributors. One submission I didn't have space for was the annual Tractor Run, raising money for Addenbrookes Charitable Trust - this is on Sunday 28<sup>th</sup> June and will be passing through Comberton around 11am.

James Gilbert 07768 421049  
[editor@combertoncontact.org.uk](mailto:editor@combertoncontact.org.uk)



## Comberton Village Website

Regular updates are available at [www.comberton.org](http://www.comberton.org)

## Local Government Contacts

Parish Council Chair Jennifer Martin  
[jen.martin@comberton-pc.gov.uk](mailto:jen.martin@comberton-pc.gov.uk)

Parish Council Clerk Jessie Brewer  
[clerk@comberton-pc.gov.uk](mailto:clerk@comberton-pc.gov.uk)  
Comberton Parish Council  
PO Box 1549  
CAMBRIDGE DO  
CB1 0ZS

District Councillors Ariel Cahn 01223 232186  
[cldr.cahna@scambs.gov.uk](mailto:cldr.cahna@scambs.gov.uk)

Dr Lisa Redrup 07855 324580  
[cldr.redrup@scambs.gov.uk](mailto:cldr.redrup@scambs.gov.uk)

County Councillor Christopher Morris 07971 678429  
[christopher.morris@cambridgeshire.gov.uk](mailto:christopher.morris@cambridgeshire.gov.uk)

# Village Help Scheme

25 May 2026	Barbara Mitton	07939915321
01 June 2026	Barbara Mitton	07939915321
08 June 2026	Gill Redman	07939915321
15 June 2026	Gill Redman	07939915321
22 June 2026	Pauline Grounds	07939915321
29 June 2026	Pauline Grounds	07939915321
06 July 2026	Angela Donnelly	07939915321

## **Volunteer Drivers & Coordinators Needed**

Do you have a few hours to spare each week? We're looking for volunteer drivers and coordinators to help community members get to important medical appointments. This service will soon become too difficult to run without more volunteers.

### **Roles available:**

**Volunteer Coordinators:** Help schedule rides and match drivers with those in need — can be done from home .

**Volunteer Drivers:** Use your own vehicle to provide safe, friendly transport for people who otherwise struggle to get to appointments.

You'll make a real difference in someone's life by helping them access essential care.

### **Requirements:**

A valid driver's licence (for drivers)

Reliability and good communication skills

Compassion and a desire to help others

### **We provide:**

Mileage reimbursement

Full orientation and support

Contact: Angela Donnelly 07731875664

Email: donnella1505@gmail.com.



OPEN TO TRADE & PUBLIC



**FOXCOTTE**  
TIMBER / BUILDING / DIY CENTRE

**TIMBER, SHEET MATERIALS  
& JOINERY**

**FIXINGS, ADHESIVES  
& SEALANTS**

**PAVING & FENCING**  
COME & VISIT OUR DISPLAY GARDENS!

**INSULATION  
& PLASTERBOARD**

**BUILDING MATERIALS**  
INC. CEMENT & BLOCKS

**DRAINAGE**

**AGGREGATES –  
LOOSE & BAGGED**

**GARDEN MACHINERY  
SALES & SERVICES**

**DECORATING, IRONMONGERY  
& HAND TOOLS**  
INC. COLOUR MATCHING

**TREE SURGERY**

**KILN DRIED FIRE WOOD**

**MON - FRI  
7.30AM - 5PM  
SAT 8AM - 1PM**

[www.foxcottecambridge.com](http://www.foxcottecambridge.com)

**01223 263 702**

UP TO  
30% OFF  
ALL PAINT



# The Parish Church of St Mary, Comberton

In the Benefice of The Lordsbridge Team



**Sunday**  
**7th June**  
**at 12.00pm**



**Farewell**  
**Bring & Share lunch**  
**for**  
**Rev Barnabas Leeke**

## Activities and Special Events



Every Wednesday at 9.30am - **Men's Shed** at The Pavilion

Thursday 25th June at 2.30pm - **Oasis Teas** at Comberton Village Hall

Saturday 27th June at 2.30pm - **Music Cafe** in St Mary's

## Regular Services in St Mary's Church Building



Sunday 7th June at 9.30am - **Morning Worship & Baptism**

Sunday 14th June at 8.00am - **BCP Holy Communion**

9.30am - **Morning Worship**

Sunday 21st June at 9.30am - **Holy Communion**

Sunday 28th June at 8.00am - **BCP Holy Communion**

9.30am - **Morning Worship & Thanksgiving for a child**

## On-line Services



Zoom Church: Sunday at 11am - ID: **8231 1473 640**

Tuesday Morning Prayer on Zoom at 9.30am - ID: **495 061 1016**

Wednesday Compline on Zoom at 8pm - ID: **899 215 191**

## Quiet Prayer



Our church building is usually open from  
7.30am-3pm for visits & individual prayer.

## On-line Giving

We can now accept on-line donations;  
more information on our website.



Find us on Facebook:  
St Mary's Church, Comberton

**For information about Baptisms, Weddings & Funerals,**  
please contact The Rev'd Chris Westgarth

http://



[www.stmaryscomberton.org](http://www.stmaryscomberton.org)

**Associate Priest: The Rev'd Chris Westgarth**

[chris.westgarth@btinternet.com](mailto:chris.westgarth@btinternet.com)

Tel: 07710 661003

# COMBERTON SPORTS & ARTS

GREAT  
VALUE

## GYM MEMBERSHIPS



Standard Membership £32 per month or £22 per month for Concessions

Pay up front - £320 / 220 per annum (2 months Discount)

- \* Fitness Suite 'Fantastic new Pulse equipment'
- \* Free Weights Room
- \* Excellent range of Fitness Classes (Book online option)
- \* Free Badminton court hire for all members

Non - members welcome on a pay & play basis

Tel: 01223 264444

[www.combertonsa.org](http://www.combertonsa.org)



## Home Meadow Care Home

Comberton Road, Toft, CB23 2RY



Discover our warm and welcoming care home, delivering the highest standards of care with dignity and respect. Our dedicated team support physical, emotional, and social wellbeing with **residential** and **dementia care** options. There are lovely views from the home and it is surrounded by spacious gardens.



01223 632655  
[healthcarehomes.co.uk](http://healthcarehomes.co.uk)



# The Comberton Bowls Club 2026 Season is here!

After two very busy and successful works parties we are now ready to welcome both opponents and spectators to our newly refurbished green.

We would like to thank the Parish Council for the generosity and support with the refurbishment and the continued support from Sage Blinds, Peasgood and Skeates SKY-HIGH Scaffolding and Beechwood Estates

All are welcome to come and watch our home games and it's not too late to join.

## This month's home fixtures

MELBOURN	HOME	MON 1.6.26	6.30 PM	C & D Lge
FOXTON	HOME	TUES 9.6.26	6.30 PM	C & D Lge
HISTON	HOME	WED 10.6.26	2.30 PM	FOXTON Lge
MELDRETH	HOME	WED 17.6.26	2.30 PM	FOXTON Lge



*Handsome Hounds*

**DOG GROOMING SPA**

*Relaxing & friendly dog grooming spa in Caldecote, Cambridge*

1-2-1 DOG GROOMING  
 NATURAL & CRUELTY-FREE PRODUCTS  
 LUXURY HYDRO BATH SPA  
 THERAPEUTIC HYDRO MASSAGE  
 ULTRA SONIC TEETH CLEANING  
 CITY & GUILDS QUALIFIED  
 CANINE FIRST AID TRAINED  
 FULLY INSURED

*Book your appointment today:*

PHONE: JODIE 07511140666  
 EMAIL: HANDSOME\_HOUNDS@ICLOUD.COM  
 WWW.HANDSOMEHOUNDSSPA.COM

HANDSOME HOUNDS DOG GROOMING SPA @ HANDSOMEHOUNDSDOGSPA

# Plumbing

## *Ian Stonebridge*


### Your local plumber

Friendly, reliable service

No job too small

Mob: 07866 278497

Tel: 01223 263586

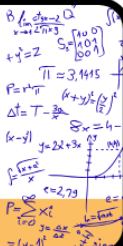


## COMBERTON MATHS TUTOR

**11+, KS3, GCSE & A-Level**

12 years' experience helping students achieve top grades  
 First class Maths degree and Cambridge PhD

**07356260129 | mkp36@cam.ac.uk**




## Caring iz sharing

Caring comes easy

### BASED IN COMBERTON

### Caring Iz Sharing

### HOME CARE SERVICE

**WE ARE PROUD TO OFFER A RANGE OF FLEXIBLE CARE PACKAGES.**

Designed to provide our clients with carefully designed support to meet their individual needs. A commitment to our key values (compassion, dependability and positivity) means clients can look forward to a secure future in their own homes.

**CONTACT DETAILS**

caringizsharing@gmail.com      0787 2654 293

# June's Health Coach Corner

## The Power of Sleep

This month I have decided to focus on sleep, something that is often undervalued and overlooked.

Sleep has so many benefits. It supports the immune system, improves brain function and memory, helps heart health, reduces stress, improves mood, and plays an important role in exercise recovery. At this time of year, many people are doing more exercise or starting new fitness routines. Good sleep can help reduce the risk of injury, support muscle repair, and improve performance. For those trying to lose weight, sleep is also important. Research suggests that when calorie intake is in the same deficit, people who sleep longer may retain more muscle and lose more fat compared with those who are sleep deprived. Sleep really is the foundation of health.

In 2012, researchers identified the glymphatic system, a waste-clearance pathway in the brain that is especially active during sleep, particularly deep sleep. This system helps clear metabolic waste, including amyloid-beta, which is associated with Alzheimer's disease. Poor sleep may reduce this important process, which is another compelling reason to prioritise rest. I do appreciate that getting the recommended 7–9 hours of sleep a night can be challenging. However, there are both basic and more advanced strategies that may help.

Basic sleep strategies - Good sleep hygiene and a proper wind-down routine are a great place to start.

Also try to:

- Avoid alcohol and heavy meals close to bedtime.
- Keep a consistent sleep and wake schedule.
- Sleep in a dark, cool room.
- Avoid caffeine later in the day (remember that chocolate contains caffeine too).

If you want to increase your sleep opportunity and bring your bedtime earlier, start small. Try moving bedtime forward by 15-minute increments and adjust gradually each week.

More advanced strategies - there are many options, but to list a few, you could also consider:

- The 3-2-1 method before bed: 3 hours before bed, stop eating; 2 hours before bed, stop fluid intake; and 1 hour before bed, stop bright light exposure (including screens and bright overhead lights).
- Breathing techniques: choose your favourite, but any technique that involves a longer exhale than inhale can help move the body into a more relaxed state.
- Engaging in a gratitude practice.
- Journaling.
- Meditation.
- Eye movement relaxation techniques.
- Progressive muscle relaxation.
- Supplementation, where needed. Various teas and supplements can be effective, but they need to be considered carefully if you are taking any medication, as there can be interactions and some may be contraindicated.

I hope this gives you a few ideas to experiment with. If sleep is something you struggle with, it is worth taking the time to find what works for you. Pick one strategy at a time, implement it consistently, and give your body time to adjust.

Sleep well and wishing you pleasant dreams.

# WWS PLUMBING & HEATING

- FULL HEATING INSTALLATION
- BOILER SERVICES
- PLUMBING & HEATING REPAIRS
- BATHROOM INSTALLATION

**RELIABLE & FRIENDLY SERVICE ■ ALL WORK UNDERTAKEN**



CALL FOR A FREE QUOTE

**01954 212134 / 07834 562532**

## ASH CROFT VETS

### MAIN SURGERY

169 St Neots Road, Hardwick, CB23 7QJ - Tel: 01954 210250

### BRANCH SURGERY

Pendrill Court, Ermine Str, Papworth, CB23 3UY - Tel: 01480 831615

Consultations by Appointment Only [www.ashcroftvet.co.uk](http://www.ashcroftvet.co.uk)



Specialists in  
made to  
measure window  
coverings

Beautifully made and locally produced  
Curtains and Roman Blinds

Suppliers of Sanderson, William Morris,  
Harlequin, Scion, Prestigious Textiles  
Roller, Vertical, Pleated, Wood, PVC and  
Aluminium Venetian Blinds

Contemporary window dressings:  
Vision/Duplex and Visage Blinds  
Plantation shutters and Awnings

Experts in home automated motorised solutions  
FREE - NO OBLIGATION QUOTES - FIND US AT

Sage Blinds & Interiors  
Phillimore Garden Centre, Cambridge Road,  
Melbourn. SG8 6EY, Tel: 01763 263399

[www.sageblinds.co.uk](http://www.sageblinds.co.uk)

Open Mon- Fri 9am-5pm & Sat 9am-1pm

**Andrina B**  
the footcare specialist

Providing expert treatment in all  
aspects of foot healthcare in  
the comfort of your own home

**Nail Cut • Callus • Athlete's Foot  
Hard Skin • Corn Removal  
Fungal Infections • Plantar Faciitis  
In-Growing Toe Nail • Orthotics  
Leg and Foot Massage**

To book your appointment call Andrina on

**07966 571 686**

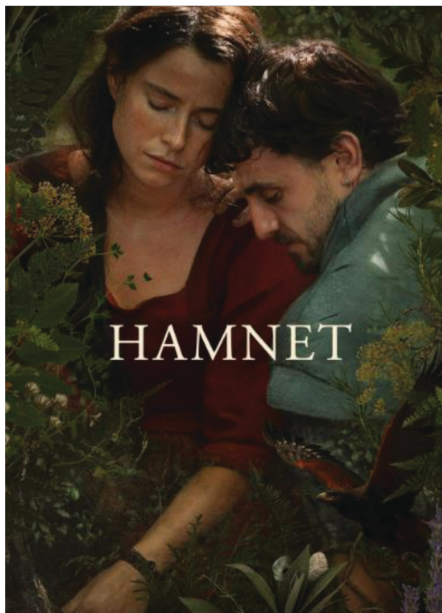
or email: [andrinab@foot-care.co.uk](mailto:andrinab@foot-care.co.uk)

**[www.foot-care.co.uk](http://www.foot-care.co.uk)**

Andrina Baldock, Foot Health Practitioner, SAC Dip. FHPP FHPT  
Register for Foot Health Practitioners Member

# Comberton Cinema

## Comberton Village Hall



**HAMNET** follows Agnes (Jessie Buckley) and her husband, William Shakespeare (Paul Mescal), as they marry in 1582 and then raise their three children in a small English village while Will frequently travels to London to write what will become *Hamlet*.

Adapted from Maggie O'Farrell's 2020 novel and directed by Academy Award-winner Chloé Zhao, the film is a moving drama about life, loss, grief and artistic creation, centering on Agnes' struggle to come to terms with the death of her only son, Hamnet, during the period in which Shakespeare is crafting his most famous play.



**Cast:** Jessie Buckley, Paul Mescal, Jacobi Jupe, Emily Watson, Joe Alwyn

**Wednesday 17<sup>th</sup> June 2026**

Doors open 7.30 pm, film starts 7.45pm

Comberton Village Hall

Ticket £5 on the door

This event is sponsored by the Village Hall Trustees.  
For further information, ring Sandra Hyde 01223 262075.



# PEST PROBLEM?

CALL DRE PEST CONTROL

01954 230708

07789 502556

- Commercial & Residential
- One-off Call Outs
- Management Contracts

Cambridge & surrounding areas  
drepestcontrol.co.uk



**Est. 1987**

## LEEWAY BUILDING SERVICES LTD

Property extensions, renovations, conversions and alterations.

All works undertaken. No job to small

Contact Tom

07766553484

[info@leewaybuildingservices.co.uk](mailto:info@leewaybuildingservices.co.uk) [www.leewaybuildingservices.co.uk](http://www.leewaybuildingservices.co.uk)



# Bands-in-the-Park is Nearly Here!

4pm – 11pm | Saturday 11th July | Comberton Recreation Ground

We've kept the best of last year's successful Festival while adding even more local talent to the stage. We are thrilled to welcome back some favourites from last year, as well as introduce new sounds to the field:

- **CVC Big Band:** Amazing student ensemble bringing swing-era classics, modern big band arrangements and jazz standards.
- **Hendricks 5:** An accomplished lineup of local jazz musicians performing everything from classic standards to contemporary hits.
- **Firecrest:** Energetic young ceilidh band from London and Cambridge with infectious Scottish and Irish folk traditional tunes. Get ready to dance – caller included!
- **Emperors of the Known Universe:** Expect guitar-driven rock and fearless vocals (think The Darkness) with a strong, high-energy pop vibe.
- **Barefoot DJs:** Truly festival legends! Irresistible and irrepressible, they'll close the night with a "get-up-and-dance" show featuring lasers, bass, funk, and dance.

**In the Pub Tent:** Enjoy intimate sets from 3 soloists: Acoustic Bruce, a local guitarist with a repertoire stretching from Dylan to Simon, Aidan Petre, a full-time pub singer bringing an upbeat spin to the songs you already love (Mumford & Sons, Coldplay, and more) and upcoming local lad Danny Moffat playing rich electric guitar instrumental jams.

No festival is complete without great food! We have a fantastic variety of refreshments confirmed:

- **The Three Horseshoes:** Providing our essential Pub Tent.
- **Our local Churches:** Offering refreshing tea and cakes
- **La Farina Santa:** Serving up fresh, authentic pizzas.
- **Comberton Grill:** Delicious burgers and kebabs.
- **The Republic of Goofy:** Tasty fried chicken.
- **JB Ices:** Keeping everyone cool with ice creams.

## We Still Need You!

A huge thank you to those who have already signed up to marshal. However, we are still looking for a few more volunteers to help the day run smoothly. If you can spare just three hours, we'd love your support. It's a wonderful way to get that warm glow from supporting your community! To volunteer or find out more, please contact Jasmine at [j.mulla@yahoo.co.uk](mailto:j.mulla@yahoo.co.uk).

We can't wait to see you all on the Rec for what promises to be a highlight of the summer. For more details, visit: [comberton-pc.gov.uk/bands-in-the-park](http://comberton-pc.gov.uk/bands-in-the-park)

**Computer Maintenance**

**Selecting and Installing a Computer**

**Repairs**

**Advice on Installing Home Networks**

**Fault Finding**

**For help, call me, Brian Girling, on 01223 208529 (Wimpole)**

**E-mail [bg@moncraft.co.uk](mailto:bg@moncraft.co.uk)**



*More than just a service*



Heating   Plumbing   Renewables   Bathrooms

All Domestic & Commercial works undertaken



[www.shelfordheating.co.uk](http://www.shelfordheating.co.uk)

T: 01223 833426   E: [sales@shelfordheating.co.uk](mailto:sales@shelfordheating.co.uk)



**FIRST POINT PROJECTS**  
BUILDING | CARPENTRY | DECORATING

**Trusted Experts Focusing on Quality & Satisfaction**

Carpentry | Small Building | Renovations | Kitchens  
Bathrooms | Fencing | Patios | Decorating

Tel: 07725000950

Email : [info@firstpointprojects.co.uk](mailto:info@firstpointprojects.co.uk)

Website : [www.firstpointprojects.co.uk](http://www.firstpointprojects.co.uk)



**Better Home Care works with customers and their families who require care in their own homes**

We build personalised packages around your homecare needs

Better Home Care is registered and regulated by the CQC (Care Quality Commission) and currently rated as "GOOD" all-round. We have also been nominated for the 2020 Great British Care Awards Regional round in the East of England.

Recruitment - We are currently looking for local care workers to cover Comberton and the surrounding Villages.

Please get in touch - 01223 262669 (Fax 01223 262 670)  
[info@betterhomecare.co.uk](mailto:info@betterhomecare.co.uk)  
Barnwell House, Barnwell Drive, Cambridge, CB5 8UU

# May Challenge Solution

Sponsored by the Comberton Co-Op

**MOVIE MELODIES\*\* or “Where have I heard that before?”**

- (1) What a wonderful world it would be.
- (2) Meglio Stasera.
- (3) Do not forsake me.
- (4) Get along home Cindy.
- (5) Have yourself a merry little Xmas.
- (6) Everybody's Talkin.
- (7) Take my breath away.
- (8) Raindrops keep falling on my head.
- (9) Young and Beautiful.
- (10) Stayin' Alive.
- (11) I want to be loved by you.
- (12) Moon River.
- (13) Self Preservation Society.
- (14) Can't take my eyes off of you.
- (15) Shallow.

- |                           |  |
|---------------------------|--|
| (14) The Deer Hunter      | (4) Rio Bravo                          |
| (6) Midnight Cowboy       | (12) Breakfast at Tiffanys             |
| (10) Saturday Night Fever | (11) Some Like it Hot                  |
| (5) The Godfather         | (3) High Noon                          |
| (13) The Italian Job      | (9) The Great Gatsby                   |
| (1) Witness               | (2) The Pink Panther                   |
| (15) A Star is Born       | (8) Butch Cassidy and the Sundance Kid |
| (7) Top Gun               |  |

Puzzle 236 LR 5/26 Courtesy of Mrs Compiler\*\*

The winner was **Dennis Coe** of Westlands, Comberton.

## Comberton Friendship Club

Now into the start of SUMMER it's time to think of events we have to look forward to in the months ahead. We now have over 50 Members who will be entertained each month with various talks etc. and our Summer Lunch.

A raffle takes place every other month; prizes for this are welcome. Items are brought in most months and sold from a table to Raise Funds.

Membership £15 a year. More information from Sue Allin 262990 or Rex Webb [rexwebb@sky.com](mailto:rexwebb@sky.com)

# HomeTechWorks

"helping you make the most of your digital home technology"



Need help with your computer?  
Or advice on a new one?



Does your phone or tablet work  
as well as it should?



Want better Wifi signal  
throughout your house?



Would you like all your photos  
organised and backed up?

Call or email Dan for a no obligation chat.  
No job too small. Testimonials online. NOTE new phone no.



[www.hometechworks.co.uk](http://www.hometechworks.co.uk)

01223 973100

[enquiry@hometechworks.co.uk](mailto:enquiry@hometechworks.co.uk)



## Cambridge Appliance Repairs

ARE YOU HAVING PROBLEMS WITH YOUR APPLIANCES?

Looking after your appliances should be just as important as  
looking after your car, house or mobile phone

We have over 35 years' experience providing a professional  
domestic and commercial appliance repair service.

**Telephone 01223 426222**

## MELBOURN FLOORING AND INTERIORS LIMITED

Phillimore Garden Centre, Cambridge Rd., Melbourn, SG8 6EY

Tel :01763 262413

### FLOORING

- Vast Range of Carpets from all leading manufacturers
- Real Wood, Laminates, Vinyl's, Karndean, Amtico and Project Floors
- Safety Flooring
- Free Estimates. Fitting by experienced staff

Visit our LARGE SHOWROOM with Ample Free Parking

9 to 5, Monday to Friday, 9 to 4 Saturday

**OR**

Call the number above to speak to one of our friendly staff

# Comberton Allotments & Gardens Association

**Summer Barbecue: Saturday 18th July - 6pm 'till late (Change of date)**

*Please Note - We have changed the date of our BBQ to avoid a clash with 'Bands in the Park'*

Our next event is the Summer Barbecue to be held on the Long Road allotment site. Numbers are limited to 40 and tickets will be £6.

For full details or to reserve your place contact:  
[quin.hollick@dsl.pipex.com](mailto:quin.hollick@dsl.pipex.com) (phone 264410)

## Spring Plant Sale

Our Spring Plant Sale was held on Sunday May 10<sup>th</sup> in the village hall and was once again a very successful event; our thanks go to those people who donated plants to us and to those who purchased them. Profits will be used to support the cost of staging the Village Autumn Show.

**Autumn Show: Saturday 12<sup>th</sup> September – 3pm – Meridian School**

Our autumn Show creeps ever nearer – it's time to think about those creative projects that you may want to exhibit in just a few months!

**Best Kept Allotment:** South Street plot holders - don't forget that the competition this year will be judged on your site only; we anticipate this will take place during July.

*Robin Worship (CA&GA secretary) [robin.worship7@gmail.com](mailto:robin.worship7@gmail.com)*

## Volunteers Needed – Help Run Our Local Brownie Unit!

Are you looking for a rewarding way to support young people in our community?

Our local Brownie unit is looking for an enthusiastic adult volunteer to help us deliver fun, friendship and adventure for girls aged 7–10. No previous experience is needed — just a willingness to help, encourage and have fun!

Volunteering could involve:

- Helping at weekly meetings
- Supporting crafts, games and activities
- Assisting on trips and special events
- Sharing a skill or hobby
- Helping behind the scenes with administration or organisation



Full training and support are provided. You would be working alongside two experienced leaders who would really appreciate an additional volunteer to help reduce the workload and share the fun!

Brownies helps girls build confidence, learn new skills and make lasting friendships — and volunteers make it all possible.

Interested in finding out more?

Please contact Lis Haigh [combertonbrownies@hotmail.co.uk](mailto:combertonbrownies@hotmail.co.uk) for an informal chat.

The Girlguiding website has information for volunteers: [www.girlguiding.org.uk/information-for-volunteers/volunteer-roles-inguiding/](http://www.girlguiding.org.uk/information-for-volunteers/volunteer-roles-inguiding/)

Come and make a difference in your local community!



# THE PLUMBING COMPANY



**Boiler & Heating Installations • Gas & Oil  
Bathrooms & Kitchens • Power Flushing  
Underfloor Heating • Solar & Heat Pumps**



**New Build or Refurbishment • Domestic & Commercial**

**For a Friendly & Efficient Plumbing Company Call Jason**

**e-mail; [jason@theplumbingcompany.com](mailto:jason@theplumbingcompany.com)**

**38 South Street, Comberton, Cambridge CB23 7DZ**

**T: 01223 262100 M: 07802 536551**

## LOCAL



**BOWLING ELECTRICAL  
SERVICES**

## ELECTRICIAN

07903756915

[alfie@bowling-electrical-services.co.uk](mailto:alfie@bowling-electrical-services.co.uk)

[WWW.BOWLING-ELECTRICAL-SERVICES.CO.UK](http://WWW.BOWLING-ELECTRICAL-SERVICES.CO.UK)



# June Challenge

## Sponsored by the Comberton Co-op

### WH\* R\* \* N TH \* W\* RLD \* R\* TH\* Y ?

Seventeen of the answers are classified as Republics, four are States, two are self governing territories and one is a Kingdom.

K * R * B * T *	* T * L *
N * * R *	S * M * *
S * R * *	V * N * * T *
* * S T R * L * *	C R * * T * *
* S R * * L	S * R B * *
* S T * N * *	* L B * N * *
M * * N M * R	* C * * D * R
* R * G * * *	P * R * G * * *
* N T * G * *	* R * B *
* R * T R * *	C * R * C * *
* S W * T * N *	* T H * * P * *
G * * * N *	H * * T *

Entries to the store no later than the 14th June . First correct entry out of the bag wins the prize of wine and chocolates generously donated by the CO-OP.

Name / Postal Address.....

Email ..... Telephone .....

Puzzle 237 LR 6/26

## Comberton WI

The Speaker at our May meeting was Alison Moore talking about - My Journey into Miniature Dolls Housing.

Alison spoke about her passion for collecting dolls houses and the people who live in them. The houses usually have a theme - Christmas, the Kings Coronation and Halloween to name a few. Every room in the house is decorated to that theme. Alison displays the Christmas houses in the windows of her house for people passing by to enjoy during the Christmas period.

Our next meeting will be at 8pm on Tuesday 9th June at Comberton Village Hall. The speaker Azba Saeed will be talking about Henna Tattoos.

WI welcomes all ages - all are welcome.  
Sue Lewis Comberton WI

## OAP Skips - cheap skip hire!



Based in Dry Drayton but we cover Bedfordshire, Cambridgeshire & Hertfordshire. Quick turnaround.

One size only (4 yard) £150 per skip  
Call Gary today on 07706 032544

## Rothwell's Carpet Cleaning

### Carpet Cleaning Upholstery & Rug Cleaning

*A few points that make us stand out:*

In business since 1993

We're an honest local family firm  
Our large truck mounted machines mean more cleaning & drying power for the best results possible.

We will move the furniture.  
100% satisfaction or it's FREE.

*Call Oliver and Max Campbell*

**01223 832 928 [www.Rothwells.biz](http://www.Rothwells.biz)**

## DAVID TURNER LEGAL SERVICES



Making or Updating  
your Will



Lasting Powers  
of Attorney



Probate & Estate  
Administration



Court of  
Protection



We have been advising clients for over 30 years and pride ourselves on our friendly personal approach whilst providing an efficient and professional service.

If we can be of help, do call in to see us. If you prefer, home visits can easily be arranged.



The Commercial Centre  
6a Green End, Comberton  
CB23 7DY



01223 264 187



[david@dtlegalservices.co.uk](mailto:david@dtlegalservices.co.uk)

# Three Horseshoes Comberton

## WINTER OPENING HOURS



Monday 3-11pm  
Tuesday 3-11pm  
Wednesday 12-11pm  
Thursday 12-11pm  
Friday 12-11pm  
Saturday 9am-11pm  
Sunday 12-9pm



---

## FOOD TIMES

DAYTIME - Wednesday-Saturday 12-3pm  
+ BREAKFAST - Saturday 9am-11.30am  
EVENING - Friday & Saturday 5pm-8pm

### PLUS: GUEST FOOD VANS

Check our website, socials, call or call in for details



First Monday of the month



Third Monday of the month

[www.threehorseshoescomberton.co.uk](http://www.threehorseshoescomberton.co.uk)  
01223 624184 22 South Street, Comberton, CB23 7DZ



## Domestic Oil Fired Heating Services

**\*Annual Oil Boiler Servicing \*Boiler Breakdown Repairs**

**\*Oil Tank Replacements \*Landlord Certificates**

**\*Service & Repair of Most AGA Cookers**

**\*Family Business With More Than 45 Years Experience**

# 01223 207901



**info@bartonoilburnerservices.co.uk**

**BROADWAY HOUSE, 149-151 ST NEOTS ROAD, HARDWICK. CB23 7QJ**



## BRIAR SECURITY SYSTEMS LTD

- Intruder Alarm Systems
- CCTV
- Access control
- Locks, grilles & safes
- Automated Gates
- 24/7 callout 365 days a year
- Free Survey



Nixon's Hall, 1 Chapel Road, Gt Eversden, Cambridge CB23 1HP

T:01223 262728 F:01223 263349

email: sales@briarsecurity.co.uk

www.briarsecurity.co.uk

# S E DAVEY PLASTERING

## Plastering, Floor screeding & Coving

TEL: 01954210941- MOB: 07711541799

sedaveyplastering@outlook.com

# **COMBERTON OPERA**

**At the Village Hall**

**Jonas Kaufmann and Anna Caterina Antonacci**



## **Bizet's Carmen**

**Orchestra and Chorus of the  
Royal Opera House Covent Garden,  
Sir Antonio Pappano (conductor)**

**A Blu-Ray video-recording of the  
2006 Covent Garden production**

**Wednesday June 3<sup>rd</sup> 2026  
at COMBERTON VILLAGE HALL**

**Doors open 6.30pm for a 7.00pm start**

**Interval with refreshments**

**Tickets £5 on the door**

**Sponsored by Comberton Village Institute Trust**

## JASON KIRBY LTD

EXPERT DECORATORS

All Aspects of Internal & External Decorating  
Period, Residential & Commercial Properties  
Wallpaper & Mural Install  
Kitchen Cabinet & Furniture Re-Sprays  
Floor Sanding & Restoration  
Plastering, Coving & Artex  
City & Guilds, NVQ Qualified  
For Service, Quality & Reliability



☎ 01954 211775  
🌐 [jasonkirbyltd.co.uk](http://jasonkirbyltd.co.uk)



### Brand new purpose built site

Flexible options for home and business  
Monitored CCTV, gate entry by key fob  
Easy access for removal company lorries  
Entry from 06.00 to 22.00, 7 days a week  
Insulated, damp free containers owned from new and  
carefully maintained  
Over 10 years of experience  
Friendly and family run

Visit our website: [www.lawstorage.co.uk](http://www.lawstorage.co.uk)  
Call us: 01223 874629  
Email us: [paul@lawstorage.co.uk](mailto:paul@lawstorage.co.uk)

**Please note**, we have moved to:  
Butts Farm, Malton Road, Orwell, SG8 5QR



Let us lighten your load



## STEAMROLLER IRONING SERVICE



Free pickup and delivery

**Price 1 lb = £2.50 (min £10.00)**

Non-smoking environment

07742 319631 / 01954 210672



## HARVEY

### PLUMBING & HEATING

- Oil boiler service / repair / install
- Central heating systems
- Power flushing
- Hot water cylinders
- Bathrooms & showers
- General plumbing

Call Darren  
01223 262676  
07947232543



## Out and About - Linton

Linton is a village which is 12 miles south of Cambridge. Over the past year like so many villages in this area it has expanded with lots of new housing developments. But the High Street does still have some amazing old properties. There are 120 listed buildings in the village.

**Guildhall Hall** (opposite the Church): The Guildhall was built in 1523. Sir John Kendrew lived here in 1962. He was awarded the Nobel Prize for Chemistry.

**Linton Union Workhouse:** This was built in 1836, cost to construct £5,888.

**Railway Station:** Opened on the 1st June 1865 and closed on the 6th March 1967. The station house still stands today as well as the sunken track beds.

**Rivey Hill Water Tower:** You can see this water tower for miles. It was built in 1935 - 1936 in the Art Deco Style. The water tower underwent major restoration work in 2018–2019.

At Christmas Linton attracts a lot of visitors as they all come to admire Jordon Cooper's Christmas lights. The family have been decorating their house and garden since 2020 and all the money raised is donated to charity.

Well that's just a taste of Linton, do go and take a wander around the village and drop into the cake shop, High Street for refreshments.

Stella J.

### SUMMER EVENTS - COTON GARDEN CLUB

OUTINGS for which members may book in late May:

Tue 9th June	Imogen Witt's Flower Farm near Newmarket
Tue 23rd June	Pembroke College Gardens
Fri 3rd July	Fuller's Mill, Bury St. Edmunds

Website [www.cotongardenclub.org](http://www.cotongardenclub.org)

Contact/ Membership Enquiries [cotongardenclub@gmail.com](mailto:cotongardenclub@gmail.com)

## Quality Bespoke Secure Storage



Easy to open & fast to access. High security with PIN codes, megapixel CCTV cameras & individual room alarms. Choose the size you really need. Store just about anything, for any length of stay. Clean, dry & condensation free. Viewings by appointment.

### MoreSpace

Manor Farm, Graveley, PE19 6PH.  
Mention SPC22 to receive £5 discount on your first month.



01480 830130 [morespacestorage.co.uk](http://morespacestorage.co.uk)

RedLocks  
Locksmiths



Your Local Independent Locksmith

**Locked Out! All locks opened, fitted, repaired and replaced.**

- \* UPVC Door & Window Specialist
- \* Garage Doors
- \* Safes fitted & opened
- \* All work guaranteed
- \* 24hr Service
- \* CRB/DBS checked

**SERVICING COMBERTON & SURROUNDING AREAS**

Student & OAP discount

t\_01223 902321

m\_07784 240 970

w\_www.redlocks.co.uk

e\_info@redlocks.co.uk



**MOT**



**Air Conditioning**



**Servicing**



**Tyres**



**Diagnostics**



**Repairs**

## Free Collection & Delivery Service Available



Book your MOT online



Email: [contact@agmotors.net](mailto:contact@agmotors.net)  
Unit A5 Atria Court | Papworth Everard  
Papworth Business Park | Cambridge | CB23 3GY

**01480 831807**  
[www.agmotors.net](http://www.agmotors.net)



@AGMOTORS\_PAP



@AGMOTORS\_NET



JUNE 2026

# Parish Council News

STAY IN THE LOOP WITH UPDATES AND ANNOUNCEMENTS!

## What's New



### Elections 2026

Comberton Parish Council are delighted to confirm the following councillors have been re-elected and co-opted:

- Cllr Jen Martin (chair)
- Cllr Claire Michel (vice-chair)
- Cllr Neil Banks
- Cllr Will Bottrill
- Cllr Dan Edwards
- Cllr Norman Evanson
- Cllr James Miles
- Cllr Simon Moffat
- Cllr Beverley Page
- Cllr Jess Marshall
- Cllr Mike Harfoot

In Comberton Parish Council, we believe local democracy is about everyone having a voice in shaping the future of our village. Residents can get involved by attending council meetings, sharing feedback, responding to consultations, and voting in elections. Those interested in becoming a councillor can stand for election if they meet the required criteria, including being over 18, a British, Commonwealth or qualifying EU citizen, and living or working within the local area.

We currently have vacancies on the Parish Council and would warmly encourage anyone interested in supporting the community and helping shape local decisions to consider becoming a councillor. If you would like to find out more about the role, please get in touch with the Clerk for further information.

By working together and encouraging community participation, we can make informed decisions and continue making Comberton a great place to live for everyone.



# JASON MOORE CARPENTRY & BUILDING Ltd

Extensions, Loft Conversions, New Build  
UPVC Fascia/Soffits, UPVC Windows/Doors, Flooring  
Kitchen Refurbishments, Flat Roof Replacements

*Free estimates* Telephone. **07939 244453**  
Call for a friendly and reliable service  
E-mail: [Jmoorecarpentry@sky.com](mailto:Jmoorecarpentry@sky.com)  
Green End, Comberton, Cambs



All aspects of Carpentry & Building  
with over 30 years experience  
City and Guilds qualified, full public liability insurance cover



*Christopher*  
THE LOCKSMITH

## ARE YOUR LOCKS BEHAVING BADLY?

We Value Old Fashioned Customer Service  
A Local Trusted Family Business Since 1989

- Specialist in UPVC & Wooden Doors
- No Call Out Charge
- No Fix No Fee
- All Work Fully Guaranteed
- 10% Senior Citizen Discount



For More Advice & Help  
Call Christopher:

**07772 111 222**

[www.christopherthelocksmith.co.uk](http://www.christopherthelocksmith.co.uk)

# CHIMNEY SWEEP



07919 888990

Professional and insured  
Certificates issued  
Advice given and problems  
solved  
[edcleansweep@gmail.com](mailto:edcleansweep@gmail.com)



Clean Sweep,  
based in  
Haslingfield

## C & C BLINDS

SPECIALISTS IN BLINDS ANY SIZE ANY COLOUR  
VERTICAL BLINDS / ROLLER BLINDS / VENETIAN BLINDS / REPAIRS  
ROMAN BLINDS / VELUX BLINDS / AWNINGS

FREE ESTIMATES

Tel:01223 211171 Mobile: 07761 262070

## New Noticeboard

A big thank you to our Maintenance Officer, Rick, for repairing and improving the village noticeboard. It has now been returned to its original location near the village pump and dentist, and his hard work has made it far more functional and presentable for the community. Please note that the locked section of the noticeboard is reserved for Parish Council notices and official information only. However, on the reverse side there is a community corkboard where residents are welcome to display local flyers, notices, and other community information.



## Multi-Usage-Games Area

We are excited to share that, between writing this article and your copy of Contact arriving, our brand-new MUGA (Multi-Use Games Area) should be nearing completion. Installation is due to begin on 18 May, and the facility will include marked-out areas for both 5-a-side football and basketball. Although the project has taken several years to come to fruition, we are delighted to deliver this new community space in response to feedback from households in our 2022 recreation survey, which highlighted the need for a place to engage young people - particularly teenagers - within the village. The MUGA will be open and accessible to all residents.

# PHYSIOTHERAPY AT HOME

Enjoy the benefits of a friendly, supportive and knowledgeable physiotherapy service, tailored to your needs, from the comfort of your own home.



-  [www.cambridgevillagesphysiotherapy.co.uk](http://www.cambridgevillagesphysiotherapy.co.uk)
-  [naomi@cambridgevillagesphysiotherapy.co.uk](mailto:naomi@cambridgevillagesphysiotherapy.co.uk)
-  07356 038 034



## BLADES FENCING & GARDEN SERVICES

All Fencing, New Installations, Repairs and Replacement including Concrete Spurs, Fence Posts and Fence preservative treatments

Cambridge And Surrounding Villages.

*Family run business with 23 years experience.  
Fully insured and registered waste carrier*

# 07939 114337

Find us on **nextdoor**

-  [andy@bladesgardenservices.co.uk](mailto:andy@bladesgardenservices.co.uk)
-  [bladesgardenservices.co.uk](http://bladesgardenservices.co.uk)

## DO YOU DETEST IRONING?

Then give Becky a call, **BECKYS IRONING SERVICE**



All ironing undertaken in a caring way with a personal touch  
Free collection and delivery with a quick turnaround. £2.50 per 1lb of weight. No job too big or too small. **Tel 07984 492918**



## City Roofing Repairs

- Roof Repairs
- Flat Roofs
- Guttering
- Lead Work
- Chimney Repairs
- Roof Cleaning
- Facias & Soffits
- Leaking Roofs
- Pigeon Proofing Solar Panels



**Contact Joseph Upton**  
**01223 420691**  
[cityroofingrepairs@hotmail.com](mailto:cityroofingrepairs@hotmail.com)  
[www.cityroofing-repairs.co.uk](http://www.cityroofing-repairs.co.uk)

# Notices



## Watts Wood

Please help us protect this vulnerable habitat by taking all litter home with you and not bringing garden waste into the wood. Fires are strictly prohibited, particularly during dry and drought conditions when the risk of damage is extremely high. Thank you for helping to care for Watts Wood.

## Grass verges

The Parish Council would like to remind all residents to avoid parking on grass verges, due to the damage it causes.

## Recreation Ground Hedge

The hedge on the recreation ground, which has recently been laid, is now beginning to regrow. In light of this natural recovery period, and particularly due to the potential for nesting birds, the hedge should be left undisturbed to allow it to re-establish fully. The willow bindings and stakes will remain in place during this time to support its continued growth.

## Fly tipping

We have received several reports of fly tipping recently. While we appreciate residents keeping us informed, we encourage everyone to report incidents directly to the appropriate service so they can be dealt with as quickly as possible. Fly tipping can be reported online here: [www.greatercambridgewaste.org/litter-in-public-spaces/report-a-fly-tip-south-cambs/](http://www.greatercambridgewaste.org/litter-in-public-spaces/report-a-fly-tip-south-cambs/)

## Village Hall Trustees Needed

Our Village Hall is at the heart of village life and thrives when supported by people from across the community. They welcome anyone who is passionate about the village and would like to get involved – whether you're new or have lived here for years. No experience needed, just enthusiasm and a little time. If you're interested in becoming a trustee, please get in touch by emailing Councillor Banks: [neil.banks@comberton-pc.gov.uk](mailto:neil.banks@comberton-pc.gov.uk)

## Speedwatch

We're looking for volunteers to take part in upcoming Speed Watch sessions to help monitor traffic speeds and support road safety in our community. If you are interested, please contact the Clerk at [clerk@comberton-pc.gov.uk](mailto:clerk@comberton-pc.gov.uk)

# Oakes and Watson Tree Surgery and Consultancy and Peter Oakes and Daughter Tree Surgery



Due to my father semi retiring in October 2017 my husband and I have continued the business that he set up some 25 years ago by combining it with our own.

It is a pleasure and an honour to continue to offer top quality tree care in and around the area where my husband and I both grew up.

## **ARBORICULTURE AT ITS BEST.**

At Oakes and Watson we pride ourselves in providing professional, competent and complete services in all aspects of tree surgery and care. We have 19 years experience in top quality.

Tree care at extremely competitive prices.

Here at Oakes and Watson we believe that experience and qualifications come hand in hand so we are fully qualified, competent and insured in the job we both love.



## **Oakes and Watson**

Cert ab L2, DIP Arb L4 (ABC), TechArborA, CS Certified

### **Our Services**

All Aspects of Tree Surgery undertaken  
Tree Removal, Crown Raising, Reductions, Cable Installation, Pollards, Hedge Cutting, Topping, Tree Planting, Thinning, Tree Reports/ Inspections, Fencing, Formative pruning  
**Woodchips and Logs always available.**

01353 968287 [www.oakesandwatson.com](http://www.oakesandwatson.com)

07885377682 [arb@oakesandwatson.com](mailto:arb@oakesandwatson.com)



For any questions, please contact [clerk@comberton-pc.gov.uk](mailto:clerk@comberton-pc.gov.uk) and we'll be in touch.

The Parish Council meets on the second Wednesday of each month at **7:30pm** in the Village Hall. Agendas and minutes are always available on our website. Residents are warmly invited to attend the full meeting, with a dedicated 15-minute slot at the start to share thoughts, ideas, and concerns.

The **Natural Environment Committee** meets most months on the same Wednesday at **6:45pm**, followed by the **Planning Committee** at **7:00pm**.



# Auditions

## The Wizard Of Oz

A panto adaptation written & directed by Rachel Nielsen

*There are parts big and small and everyone is welcome to audition, so come along and bring your friends! No booking necessary*

Auditions will be held at the Old Village Hall, Green End, Comberton, CB23 7DY		
<b>Tuesday 23rd June</b>	6:30-7:30pm 7:45 - 9:15pm	Children currently in Years 6-9 Adults plus Children currently in Y10+
<b>Sunday 28th June</b>	5:30-6:30pm 7:00 - 8:30pm	Children currently in Years 6-9 Adults plus Children currently in Y10+
<b>Performance Dates 11-13<sup>th</sup> December 2026</b>		
Our usual rehearsal nights are Tuesdays and Wednesdays starting in September, with the occasional Sunday. Further details will be shared at auditions. To find out more about the auditions, or if you are interested in becoming part of our Production Team, please contact <a href="mailto:combertonplayers@gmail.com">combertonplayers@gmail.com</a>		

## Comberton Heritage Society

Our meeting this month is on Tuesday 23rd June and will be given by Roger Leivers.

### The House of Spies: Farm Hall Godmanchester

Well known local historian Roger Leivers will talk about the role that Farm Hall played in the second world war and its chequered and fascinating use as an SOE (Special Operations Executive) training centre.

The meeting is at 8pm in Comberton Village Hall.

# Comberton Village Hall Lettings Charges

	Private Individuals		Community Groups *		Community Commercial	
	Comberton Residents	Non-Residents	Affiliated	Non-Affiliated	Local/Non-Franchised	Non-Local/Franchised
<b>SESSION</b>	Main Hall		Main Hall		Main Hall	
Daytime	£25	£35	£20	£30	£40	£45
Evenings (except Saturday)	£40	£50	£20 *	£30 *	£40	£50
Saturday eve.	£70	£85	£20 *	£30 *	£145 *	£165
	Meeting Room		Meeting Room		Meeting Room	
All sessions	£17.50	£22.50	£17.50	£22.50	£30	£32.50
	Community Room		Community Room		Community Room	
All sessions	£15	£20	£15	£20	£25	£27.50

Unless otherwise stated, charges are per session. Sessions are 9am to 1pm, 2pm to 5:30pm and 6pm to 10:30pm (midnight on Fri/Sat/Sun).

A refundable deposit of £50 is required at the time of booking.

Prices for commercial lettings and weddings are available on request.

\*Additional information for groups:

- Affiliated Community groups holding evening group social or fundraising events will be charged the residents evening rates. Non-affiliated groups holding similar events will be charged the non-residents evening rates. **Local/Non-franchised Community Commercial lettings can be reduced from £145 to £70 at the discretion of the Trustees, if the event is for a suitable charity. Groups should write to the Lettings Secretary with their request, including information on the charity, and this will be considered by the Trustees.**
- Groups working with children and/or vulnerable adults will need to have child protection and vulnerable adult policies & procedures in place
- Annual affiliation fee of £10 is due on 1<sup>st</sup> January.

More information, including hall availability, can be found at [www.combertonvillagehall.org](http://www.combertonvillagehall.org)

To make a booking contact the Village Hall Administrator, Janice Sutton at [combertonvillagehall@gmail.com](mailto:combertonvillagehall@gmail.com) or on 07435 324408 (9am to 9pm). Please note that this is a part-time role carried out around my job. If I am unable to answer your call please leave a message and i will phone you back, or send me an email.

**E D G E**

**COMMUNITY YOUTH CLUB**

**THURSDAYS. 4 PM TO 6 PM.  
COMBERTON BAPTIST CHURCH.**



Printed by

**Victoire Press**

9-10 Viking Way, CB23 8EL. 01954 781919



The  
Form  
Practice

## A COMPLEMENTARY HEALTH PRACTICE WITH A DIFFERENCE

We believe in a holistic approach to health, using the latest technology to support hands-on therapy

Based in our rural Cambridgeshire clinic, our integrated, collaborative team of practitioners will work together to provide a personalised treatment plan that addresses every aspect of your health.

- Osteopathy
- Physiotherapy
- Women's Health
- Men's Health
- Mummy MOT & New Mothers
- Mizan therapy
- Pilates
- The latest technology - Indiba, K Laser & Pelvipower machines



[www.theformpractice.com](http://www.theformpractice.com)  
[info@theformpractice.com](mailto:info@theformpractice.com)  
01954 214473



Main Street  
Hardwick  
CB23 7QS

# COMBERTON BABY & TODDLER GROUP

**TERM TIME WEDNESDAYS, 9.45-11.30**

**COMBERTON VILLAGE HALL**

**£2.50 PER FAMILY, FREE FOR FIRST TIMERS**

**TOYS, CRAFTS,  
OUTDOOR PLAY,  
SINGING AND  
SNACKS FOR  
0-4s**

**COFFEE, TEA,  
BISCUITS, AND A  
CHANCE TO  
CHAT FOR  
GROWN-UPS!**