

## COMBERTON CONTACT TEAM

Editor & Designer	Anne Horler	20 Green End	01223 264683
	email: <a href="mailto:editor@combertoncontact.org.uk">editor@combertoncontact.org.uk</a>		
Treasurer	Liz Sexton	20 Barrons Way	01223 263786
Advertising	email to: <a href="mailto:editor@combertoncontact.org.uk">editor@combertoncontact.org.uk</a>		
Distribution	Jenny Brown	91 Barton Road	01223 262495
Please send all articles to Anne at the above address, or by email in plain or rich text.			

## CONTENTS

Comberton Village College Grand Piano Appeal . . . . .	front cover
Meridian School Habitats Garden . . . . .	inside front cover
Comberton Twinning Association Quiz Night . . . . .	inside front cover
A Message from the Editor . . . . .	3
Donald Oxe . . . . .	3
Comberton Cinema . . . . .	3
Cleaner for Hall Wanted . . . . .	5
Scout Group Bonfire and Fireworks . . . . .	5
Little Footsteps . . . . .	7
Bridge Drive . . . . .	7
Cello recital . . . . .	9
Parish Council Report . . . . .	11
St Mary's Church . . . . .	15
St Mary's Church Fete . . . . .	15
Catholic Church . . . . .	17
Comberton Baptist Church . . . . .	17
Meridian School . . . . .	19
Comberton Village College . . . . .	21
Piano Appeal . . . . .	21
Comberton Friendship Club . . . . .	27
Comberton WI . . . . .	27
Children's Films . . . . .	27
Comberton Winemakers . . . . .	29
Open Letter . . . . .	29
Barton Drama Group . . . . .	31
Cycling Through Barton . . . . .	31
Cambridge Building Society . . . . .	31
Comberton Neighbourhood Panel Meeting . . . . .	31
Rosie in Stitches . . . . .	35
Autumn Lawn Care . . . . .	35
Planning for Spring . . . . .	37
Challenge . . . . .	39
Challenge Answers . . . . .	41
Lisa Kent Memorial Quiz Night . . . . .	inside back cover
Comberton Library Space Hop . . . . .	back cover

## ADVERTISING RATES FOR COMBERTON CONTACT

from 1<sup>st</sup> June 2009

Changes will be effective at the time of booking or re-booking advertisements.

	Size (w x h)	Annual	Single Edition
<b>Whole Page</b>	122mm x 183mm	£400	£44
<b>Three-fifths Page</b>	122mm x 109mm	£240	£27
<b>Two-fifths Page</b>	122mm x 72mm	£160	£18
<b>One-fifth Page</b>	122mm x 35mm	£ 80	£ 9
	60mm x 72mm	£ 80	£ 9
<b>One-tenth Page</b>	60mm x 35mm	£ 50	£ 6
Coloured back cover (one-off)	Whole page	£88	Half page £44

## DATES FOR YOUR DIARY

Every Tuesday	Comberton Café at the Village Hall
Every Tuesday	Table Tennis in Village Hall
Every Tuesday 2.00pm	Slow 'n' Low in Village Hall
Every Wednesday 10.00 to 11.30	Comberton Toddler Group at Village Hall
Every Wednesday evening	Tang Soo Do at Meridian School
1st and 3rd Sunday of each month	S.E.F at Comberton Baptist Church
Every Tuesday	Young Enterprise after school at Meridian School
1 <sup>st</sup> 2 <sup>nd</sup> and 4 <sup>th</sup> Monday Evenings at 7.00pm	Carpet Bowls at Village Hall.
4th Tuesday of each month at 8.00pm	Comberton Antiquarian Society at Village Hall

### OCTOBER 2010

2nd October	7.30pm	Recital at Friends School Saffron Walden
8th October	7.30pm	AGM Comberton Winemakers
10th - 12th October		Open Cambridge Weekend
12th October	7.45pm	WI Meeting
13th October	7.30pm	Parish Council Meeting at Village Hall
20th - 31st October		Festival of Ideas
22nd October	3.00pm	Opening of Habitat Garden at Meridian School
23rd October	7.30pm	Film Sherlock Holmes at Village Hall
29th October	2.00pm	Bridge Drive at Village Hall

### NOVEMBER 2010

6th November	6.30pm	Scouts Bonfire and Fireworks at The Drift
17th November	7.30pm	Film The Ghost at Village Hall
24th November		Comberton Neighbourhood Panel Meeting at CVC
24th -27th November	8.00pm	Barton Drama Group at Barton Village Hall

### DECEMBER 2010

10th & 11th December	Aladdin
----------------------	---------

## A MESSAGE FROM THE EDITOR

Our small adverts Contact website is attracting more sellers than buyers which is the way it usually happens at first. There are some very good quality and attractively priced items offered for sale. Do look at the website if you are looking to buy something or, if you have anything you wish to sell, do send it to me by email or over the 'phone or by a note, and I will include it on the website.

I have to apologise most profusely for inadvertently omitting this message from last month's Contact.

### DONALD OXER

Donald Oxer passed away on 13th June 2010. Don's wife Margaret, his daughters Maxine and Sallie and his brother Derek, would like to say how much they appreciated all the cards and messages of condolence which they received. Don was a very quiet and unassuming person and he would have been very surprised to know that so many people thought about him and attended his funeral. Thank you very much for the donations to the British heart foundation and for all the support received during this very sad time.

## COMBERTON CINEMA

PRESENTS

Robert Downey Jr. & Jude Law in

### SHERLOCK HOLMES 12A

Wed. 20<sup>th</sup> October

Ewan McGregor & Pierce Brosnan  
in

### The GHOST<sub>15</sub>

Wed. 17<sup>th</sup> November

Doors open 7.30

Film starts 7.45

Tickets cost £3.50

On the door

For further information contact Sandra Hyde Tel: 262075

*These events are sponsored by Comberton Village Hall Trustees*

# ROTHWELLS CARPET CLEANING

The most thorough cleaning achievable

Local family firm

Established 1993

We lift and move all furniture

Only pay if & when satisfied - no quibble

For a firm, fair and fully inclusive price

Phone Max Campbell

**01223 832 928**

**07711 675 613**

If you use us, you'll recommend us!

## **FIVE <sup>\*\*\*</sup> STAR** Pest Control

**FAST, EFFECTIVE AND  
SAFE CONTROL OF  
EVERY PEST PROBLEM  
IN DOMESTIC,  
COMMERCIAL AND  
AGRICULTURAL  
PREMISES**

**(01223) 264999**

4 Fox's Way, Comberton, Cambs CB23 7DL



## FRAMING TALENT

Professional friendly

quality picture

FRAMING

and mount cutting service

also

Frame Restoration

Telephone: 01954 210154

to discuss

your requirements

SUSIE JACQUES

33 ELLISON LANE HARDWICK

vertical  
venetian  
roller  
roman  
conservatory  
velux  
curtains  
awnings

free measuring  
and fitting

**10% EXTRA DISCOUNT**  
to readers of Comberton Contact

**cambridgesunblinds**

**Cambridge**  
**01223 460192 / 01954 211037**  
**www.sunblinds.co.uk**

**James Pym**  
**Painter and Decorator**

9 Haslingfield Road

Harlton

Cambridge

CB23 1ER

Telephone 01223 263223



**Over 20 years Experience**  
**Domestic & Commercial work undertaken**

**RON GLASBY**  
**PAINTER & DECORATOR**

**FIRST CLASS WORK**

**GOOD RATES - FREE ESTIMATES**

**01223 246859**

COMBERTON VILLAGE HALL

**The Trustees of the Village  
Hall have a vacancy for a  
cleaner of the hall**

Anyone interested in applying for this position should first  
contact  
the Chairman of the Trustees, Malcolm Wright, for further  
details.

**1<sup>st</sup> Comberton Scout Group  
Beavers, Cubs and Scouts**

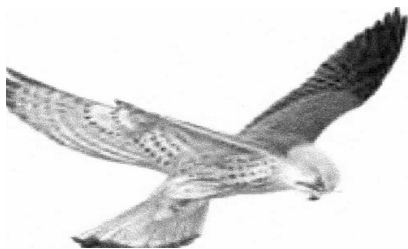
**GUY FAWKES BONFIRE AND  
BRILLIANT FIREWORKS DISPLAY**

**COCONUT SHY, RAFFLE, GUY COMPETITION,  
BURGERS, HOT DOGS & HOT DRINKS.**

**Adults :- £4.00 Children :- £2.00**

**100M ALONG THE DRIFT FROM THE  
MINI-ROUNABOUT IN COMBERTON**

**SATURDAY 6<sup>th</sup> NOVEMBER,  
GATE OPENS 6:30 P.M.**



**Geoff Wilson**  
**Carpentry & Joinery Ltd**  
**Domestic & Commercial Property Repairs**  
**and Maintenance**  
Comberton, Cambs  
Tel/Fax: 01223 262698  
Mobile: 07806 491059  
[www.geoffwilsoncarpentryandjoineryltd.co.uk](http://www.geoffwilsoncarpentryandjoineryltd.co.uk)

## **JASON KIRBY**

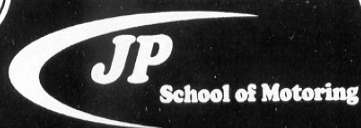
*Professional Painting & Decorating Ltd*

- All aspects of painting & decorating under taken -  
Internal & external, residential and commercial
- All work guaranteed
- Quality & reliability at competitive rates
- References available
- City & Guilds qualified
- Full public liability Insurance

*Tel/Fax: 01954 231222*

Mobile: 07966 174431  
[asonkirbyltd@gmail.com](mailto:asonkirbyltd@gmail.com)

*A professional service from start to finish*



**Friendly, Expert Instruction**  
**at Competitive Rates**

**Call Anytime On:**  
**01223 262667**  
**07976 264387**  
**[www.jpsm.co.uk](http://www.jpsm.co.uk)**

**59 The Valley, Comberton,**  
**Cambridge CB23 7DF**



**Plumbing**



**Ian Stonebridge**

**Your local plumber**  
**tel: 263586 / mob: 07866 278497**

**Trousers too long? Skirts too tight?**

Small alterations undertaken  
incl. headings and hems for curtains,  
nets and voile.

Call Heidi Crockford on 01223 263008

Thank you to all those families who came and supported our Summer Roadshow.  
We had lots of fun and it was great meeting new families!

**New Term Sessions**

Tuesdays 10-11.30am **Stay & Play for Under 2's** Toft Village Hall (not every Tuesday so please check website/poster)

Tuesdays 2-3.30pm **Stay & Play** Caldecote Pre-School (term time only)

Thursday 14 October 10.30-11.30 **Soft Play** Caldecote Village Hall

Saturday 16 October 10-11 **Dads Messy Play** Caldecote Village Hall

Monday 1 November **Parents Forum** New Building (if complete)

Saturday 6 November **Working Mums Café** New Building (if complete)

**All sessions are free**

**UPDATE - Our new building is nearly complete!**

Little Footsteps – Caldecote Children's Centre

Caldecote Village Hall, Furlong Way, Highfields Caldecote, CB23 7ZH, 01954 211289/284672

[caldecotechildrenscentre@cambridgeshire.gov.uk](mailto:caldecotechildrenscentre@cambridgeshire.gov.uk)

## **ARTHRITIS RESEARCH UK LOCAL BRANCH**

is holding a Bridge Drive on Friday 29th October 2010 at the Village Hall, Green End, Comberton, commencing at 2.00pm. A delicious tea will be served and Arthritis Research UK Christmas Cards will be on sale and there will be a raffle.

Tickets are £8.00 each. For further information and entry form please contact Jean Bacon at 92b Swaynes Lane, telephone number 01223 264711

## **ALOE VERA**

*Discover the benefits of Aloe Vera with Forever Living Products - the world's largest and best grower of Aloe Vera. An extensive range from Health Drinks to Skincare products with a 60-day 'satisfaction or your money back' guarantee. Millions of delighted customers - humans and animals. For more details, literature and free sample sachets, please telephone Mary Benwell, your local Independent Distributor of FLP on 01223 870743*

## **Nails & Beauty by Allison**

One to One treatments,  
Tranquil setting in Hardwick.  
Gel Nails, Waxing, Make up,  
etc

01954 211094 / 07753 211384

[www.nailsandbeautybyallison.co.uk](http://www.nailsandbeautybyallison.co.uk)

## **MERCER TREE SERVICES**

Professional Arboricultural  
Contractors

01799 520044

£5 million Public Liability Insurance

NPTC Qualified  
Members of AA and FCA  
Seasoned logs and woodchip

## **Heating Oil?**

*Are you paying too much?*

Ring me before you buy  
Deliveries direct to you  
by national / local suppliers  
Jeremy Cole (01954) 719452

# **agricole**

**You'll warm to the savings**

## **DAVEY BUILD**

**Extension ▪ Renovations  
Repairs ▪ Alterations**

**-CLEAN-  
- GOOD QUALITY WORKMENSHP-  
-VERY RELIABLE SERVICE!-**

**FREE ESTIMATES AND ADVICE!**

**NO JOB TOO SMALL!**

**TEL: 01954 210941  
MOB: 07711 541799**

**6 Ellison Lane, Hardwick, Cambridge.**





# Cello Recital

International soloist Jamie Walton will perform works from Mendelssohn, Britten and Chopin.

**Soloist**

**Jamie Walton**

**Pianist**

**Danny Grimwood**

Doors open 6.45pm

**Ticket price**  
**£25**

Ticket includes drinks during the reception and interval. Drinks and canapés to be served at the end of the performance.

**Saturday**

**2nd October 2010**

**7.30pm**

**Friends' School  
Assembly Hall  
Saffron Walden**

**To order tickets contact 07583 010555  
Or email [westgarthfundcelloreital@friends.org.uk](mailto:westgarthfundcelloreital@friends.org.uk)**

**All proceeds to be donated to MNDA, Cambridgeshire**

## SPORT & REMEDIAL MASSAGE THERAPY

at 'Dragonfly' the beautiful day  
spa at Burwash Manor, Barton.  
Sport Massage can help treat/prevent  
sporting injuries.

In life, painful conditions can result from  
postural/occupational stresses, massage  
will help to identify and alter these.

Stuck for gift ideas...Sports Massage is  
the PERFECT present for that person who  
has everything!

Prices start from £30.00.

For bookings or further information,  
please call Teresa on 077398 36325 or  
email: tbufton@hotmail.com

## STEAMROLLER IRONING SERVICES



48 hour turnaround, Good reliable service  
Hangers & bags supplied (returnable)

**PRICE 1LB IN WEIGHT = £ 1.25**  
(MIN £10)

**CALL 07742 319631 / 01954 210672**

**MAKE** space

**JAMES WARD**  
DESIGN AND DECORATION

shelves      cupboards      tables  
*made to measure   fitted or freestanding   painted or natural*

01223 214031 ■ 0780 153 3124

[www.jameswardart.co.uk](http://www.jameswardart.co.uk)

**ideas realised**

FOOTEN, CAMBRIDGE, CB22 6SJ

C1410 C240 E0308 E0308

Gas Safe Register™ replaces CORG3 Regulations in GB from 1<sup>st</sup>

## LOCAL DOMESTIC SPECIALISTS

Gas, Oil & LPG appliances serviced, installed and repaired  
Bathroom design and installation  
All plumbing & heating works undertaken  
Weekend call out service (8am - 5pm)

Andy Day: 07967 095720 | Shaun Rivers: 07967 095721  
Office: 01223 870580 (24hr tel/fax) enquiries@nutcombecambridge.co.uk

[www.nutcombecambridge.co.uk](http://www.nutcombecambridge.co.uk)

**Computer  
Maintenance**

**Selecting and  
Installing a Computer**

**Repairs**

**Advice on Installing  
Home Networks**

**Fault Finding**

**For help, call me, Brian Girling,  
on 01223 208529 (Wimpole)**

E-mail [bg@moncraft.co.uk](mailto:bg@moncraft.co.uk)

## DAVID PECK PAINTER & DECORATOR

INTERNAL & EXTERNAL DECORATING  
Quality Work Guaranteed  
Competitive Prices

Ring for Free Estimate  
Tel: 01480 830898 Mob: 07742 542974

30 Cheere Way, Papworth Everard,  
Cambs CB23 3NZ

## PARISH COUNCIL REPORT from the Clerk

The Parish Council met on Wednesday 8 September 2010

### ***Comberton Parish Plan - Your chance to say what you want to see happening in Comberton!***

The previous questionnaire in 2001 was instrumental in production of the Parish Plan in 2003. Comberton was one of the first parishes in South Cambridgeshire to complete a parish plan. This resulted in several successful grant applications for facilities such as the Skateboard Park, the Safer Routes to School Path, the Recreation Ground Extension and also a contribution to the Village Hall.

Please ask everyone in your house to help filling in the questionnaire that will be delivered to you very soon. All deliverers and collectors will carry Parish Council identification. Your views matter!! We need your ideas in order to develop priorities for action. Please fill in as many of the questions as possible.

### ***Parking problems associated with CVC – B1046 road including junction with Kentings***

In response to the Parish Council's letter to the County Council it has replied as follows

"I note the request for waiting restrictions in Comberton, however at this time budget cuts have meant that we have had to focus funding where it is most needed and this is primarily accident remedial schemes. There is the potential for third party funding of minor traffic management schemes of this nature if the request is deemed appropriate. Should the Parish Council be in the position where it could potentially fund the provision of the waiting restrictions, if they were deemed appropriate by the highways department, then I would suggest that we meet on site during term time (preferably when the children are being collected) to discuss the matter further. A rough guide to the estimated cost of the potential work is £1500 - £2000."

Would you like to have a yellow line in Kentings for restrictive waiting during certain periods of the day when the children are dropped off and collected from the Village College?

Do you think that the time should be extended or indeed that there should be no parking at all and that double yellow lines should be introduced?

Do you think that any introduction of lines will just push the problems into other areas of the village?

Should the Parish Council pay for this work or not?

The Parish Council is keen to hear your views on this matter. Emails or letters to the Clerk before the next meeting please.

### ***Mobile Library service***

The County Council has written to say that the current provision will be retained i.e. Nursery Way, arrives 14.40, departs 15.20.monthly on a Tuesday, dates avail-

# WS PLUMBING & HEATING

- FULL HEATING INSTALLATION
- BOILER SERVICES
- PLUMBING & HEATING REPAIRS
- BATHROOM INSTALLATION

**RELIABLE & FRIENDLY SERVICE ■ ALL WORK UNDERTAKEN**



CALL FOR A FREE QUOTE

**01954 212134 / 07834 562532**

## **WARTON & CLARK SKIP HIRE**

6 HARDWICK ROAD, TOFT CB23 7RQ

2,3,4,6 & 8 Yard Skips

### **BUILDING MATERIALS AVAILABLE**

**Top Soil sold from our Yard at Toft**

Free delivery and prompt service. All major credit cards accepted

**Tel: 01223 263287 / 264202 Fax: 01223 262685**

## D.J. Downes Accountancy & Taxation

Small Business Specialist  
Individuals, partnerships,  
limited companies,  
self-assessment, accounts, VAT

For a no-obligation, free initial  
interview call  
01223 872722

## **Law Storage Ltd**

*Secure storage in South Cambridgeshire*

**Home-owners and Businesses**

Self store - you have access when you need it with  
your own key

Collection and delivery service also available

**Short or long term storage from 4 weeks minimum**

secure, dry units - closed-circuit TV - seven days a week  
flexible capacity - boxes available

*for more information and prices go to our website*

**[www.lawstorage.co.uk](http://www.lawstorage.co.uk)**

**Call 01223 874 629**

**email: [paul@lawstorage.co.uk](mailto:paul@lawstorage.co.uk)**

Local, flexible storage solutions for you

able from CCC website

### ***Connections Bus***

The contract for the youth bus has been extended for a further six months. A recent report indicated that there have been 13 visits during the summer term with an average attendance of 16, In total approximately 40 youngsters have used the facility over the last few months. The bus is parked in the recreation ground car park most Tuesday evenings. The Bus is aimed at 11-18 year olds and the leaders host a range of activities.

### ***The District Council's Licensing policy consultation***

The draft licensing policy is available to view <http://www.scams.gov.uk/Business/Licensing/default.htm>

and is also available at local libraries including Bar Hill and Cambourne, and at the SCDC offices in Cambourne. The deadline date for the consultation response is 4 October.

### ***County Council gritting schedules***

The Parish Council has written to urge the County Council to include Green End and also South Street and Royston Lane to its schedules.

### ***NHS notification of application for pharmacy in Hardwick***

Responses from the Surgery and others who have response to the consultation were considered and the Parish Council will be writing to object strongly to the proposals.

### ***Parish Council members contact details***

Miss Chris Westgarth (Chairman)	85 Barton Road	263242
Dr Janet McCabe (Vice-Chairman)	3 Westcroft	263387
Miss Amanda Bacon	Arial View, 92B Swaynes Lane	264711
Mr John Cornell	16 Barrons Way	263566
Mr Ted Halford	69 Swaynes Lane	262531
Mr Andrew Hollick	73 Swaynes Lane	263089
Mrs Sandra Hyde	57 Long Road	262075
Mr Simon Moffat	86 Swaynes Lane	
Mrs Dorothy	5 The Valley	263027
Mr Richard	43 West Street	264508
Mr Tom Serby	Home Farm, 250 Barton Road	262303
Mr Jock Walsh	38 Fox's Way	263225

**The next Parish Council meeting will be on Wednesday 13 October 2010 at 7.30pm in the Village Hall.** All parishioners are invited to attend the meeting and the first ten minutes or so is open to residents to ask questions or make

# Expertise on your doorstep

**Head Office Administration Centre**  
PO Box 232, 51 Newmarket Road  
**Cambridge CB5 8FF**

Customer Hotline Tel 0845 601 3344  
[www.cambridgebs.co.uk](http://www.cambridgebs.co.uk)

**CAMBRIDGE**  
BUILDING SOCIETY  
Time to keep your money close to home



## **Jefferys, Houghton & Co** **CHARTERED ACCOUNTANTS**

The Commercial Centre  
6 Green End, Comberton, Cambridge CB23 7DY  
Tel: Cambridge (01223) 262128 Fax (01223) 262287

E-Mail: [jennifer@jefferys-houghton.freemove.co.uk](mailto:jennifer@jefferys-houghton.freemove.co.uk)  
Website: [www.jefferys-houghton.co.uk](http://www.jefferys-houghton.co.uk)

For all your accountancy needs, including accounts preparation for sole traders, partnerships and small companies, personal, business, company taxation and full payroll service.

Fax and photocopying facilities also available

### **Business Hours**

**Monday-Friday**  
**9:00am - 1:00pm 2:00pm – 5:00pm**

comments and observations on Comberton matters or on items on the agenda. If the matter is or has already been under discussion a response may be given at the meeting otherwise the matter will be tabled for fuller discussion at the next or a future meeting.

## THE PARISH CHURCH OF ST. MARY, COMBERTON

**Team Rector, and Priest-in-Charge** of St Mary's, Comberton, St Andrew's, Toft and Caldecote with Childerley: Revd. Mike Booker tel: 01223 260095

[www.combertonchurch.co.uk](http://www.combertonchurch.co.uk)

**Churchwardens** Mr M.R. Evans 82 Green End Tel 263215

Mrs M Jenkins 80 West Street Tel 263751

Please contact Mike Booker about arrangements for **Baptisms, Funerals, Weddings** and the readings of Banns.

### Services and Events at St Mary's in October

3<sup>rd</sup> October Harvest Festival Service

10<sup>th</sup> October Holy Communion - Start of our sermon series on the Bible

17<sup>th</sup> October Morning Prayer

Wed. 20th October. 7.30pm Licensing Service and launch of the Lordsbridge Team, Childerley Barn

24<sup>th</sup> October Holy Communion

31<sup>st</sup> October All Saints Day All-Age Communion

**Is the Bible a closed book?** Sometimes we can be inspired by the message of the Bible, but other times frankly, confused. There are so many authors, different styles of writing, different ways of understanding what it means. Through October and November, our sermons will be looking at the wonderful, varied, and fascinating range of writing found within the Old and the New Testaments.

On the evening of Wednesday 3<sup>rd</sup> November we welcome Rev Dr Mike Thompson, lecturer in New Testament at Ridley Hall, speaking on **Making Sense of the Bible**. He's an excellent speaker, so please book the date.

**A big 'thankyou'** to everybody who helped to run and who came to support this year's church fete. It was a crowded, happy and very successful occasion.

**St Mary's Church building** is open all day every weekend, not only when there are services. Please feel free to come in at any time, to sit, pray, think or simply enjoy the quiet.

## ST MARY'S CHURCH FÊTE

We would like to give a very big thank you to everyone who supported St Mary's Annual Church Fête on Bank Holiday Monday. We are delighted to report that the amount raised was in excess of £4000. This will help to pay for our children's barn and the new servery in church that has only just been completed.



**HONDA**  
POWER EQUIPMENT

**HAYTER**  
MAKERS OF THE FINEST MOWERS

**Westwood**

**Husqvarna**

**TORO.**



**25kg Aquasol Water Softener  
Tablets Only £8.00 per bag  
or 3 bags for only £21.00  
Dry dog food from only £9.50 per 15kg**

**Sales, Service & Parts.**

**Mark Weatherhead**

**St. Neots Road, Hardwick, Cambridge  
Tel: 01954-210355 Fax: 01954-210236**



A big problem at the end of any fête is what to do with the enormous number of items that nobody has wanted to buy. Although we always store some things, our storage space is limited, so the bulk of what's left over goes for recycling.

This year the clothing was bagged up for a charity collection, boxes of books were passed on to other charities and most of the rest was collected the following day by Walton and Clark and subsequently sorted and recycled by them. Nothing was simply thrown away.

Thank you once again for your support and please remember that St Mary's is your church and that you will always receive a warm welcome at any of our services.

## THE CATHOLIC CHURCH OF OUR LADY AND THE ENGLISH MARTYRS

Hills Road, Cambridge, CB2 1JR  
01223 350787

The Catholic Church of Our Lady and the English Martyrs (OLEM) serves much of the south and west of Cambridge.

Detailed below are the normal times of masses at weekends

Sunday Vigil Mass on Saturday evening:-

5.00 pm Cambourne

6.00 pm Bar Hill

6.00 pm OLEM

Sunday Masses at OLEM

8.00 am

9.30 am (Children's)

10.45 am (Sung)

12.15 pm (Polish)

5.00 pm (Folk)

6.15 pm (Latin)

The Feast of All Saints is celebrated this year on Sunday 31<sup>st</sup> October.

Further details of these and all other services for October for the entire parish including Sawston may be found on the parish website which also has the weekly newssheet and other parish information. [www.olem.org.uk](http://www.olem.org.uk)

## *You are Welcome at Comberton Baptist Church*

**SUNDAY SERVICES:** Our morning services begin at 10.30 am - 12 noon and feature a mixture of traditional and contemporary music, engaging topics and a variety of speakers. Refreshments are served after the service. Children stay for the first part of this service and then have the opportunity to go to their teams

# FIREWOOD



Ideal for wood burners and open fires

Dry/cut to size

Delivered to your door in  
1 ton capacity dumpy bag.

**£30** per bag!!

07531 232688

## Peter Oakes

### Tree Surgery



Providing qualified, experienced  
and friendly staff

for all aspects of tree surgery work.

Supplier of logs, wood chips  
and fencing materials.

Hedge trimming and fencing work  
also undertaken.

**Tel: 01954 214510**

email: oakestreesurgery@aol.com

## OPTOMETRIST

**D.J.Ireland, 2 Ivy Field, Barton**

***Sight Testing, Contact Lenses***

***Wide Range of Frames***

**For an appointment phone 263117**

**FREE  
Lawn  
Health  
Check**



**Amazingly green lawns  
for surprisingly little!**

We provide a specialist, professional service  
for people who are serious about their lawns

- **Free Lawn Health Check** -  
an in-depth survey of your lawn
- **Free Programme Proposal** -  
a unique solution for your lawn
- The finest feeds, fertilisers and weed  
control products available along with  
expert knowledge

For further information call us free on

**01480 812 393**

or email [info@prolawncares.co.uk](mailto:info@prolawncares.co.uk)

**ProLawnCare**



[www.prolawncares.co.uk](http://www.prolawncares.co.uk)



in the 'The Lighthouse!'



**PARENTS WITH INFANTS:** At CBC we want to make every one feel welcome, this includes our youngest guests. We have a crèche available during the service where parents with young babies can go if their children become restless – there is also a monitor so you can see and hear and still feeling part of the service.



**CHILDREN & YOUNG PEOPLE: The Lighthouse @ CBC** are groups for children and young people aged 2-17 years. For the under 2's there is also a crèche available. **S.E.F** is a group for teenagers aged 14-17 which meets every Sunday evening. Here young people can make friends and explore their faith together.



Junior Church is an exciting new programme for children and young people aged 2-13 years, with a newly formed group for 11-13yrs. Packed with great activities, craft, bible stories, singing, games and lots more...

Where: Comberton Baptist Church (in the centre behind the church)

When: Every fourth Sunday of each month

Time: Doors open at 10.15am with activities starting at 10.30-11.45am

Comberton Baptist Church, Green End Comberton

For more information please call Donna on 01223 264707 or 01954 211259



**PRAYER & COUNSELLING:** After each morning service members of CBC's Prayer Team will be available at the front of the church to pray with you regarding any needs you may have. CBC also offers confidential counselling on an ongoing basis, please contact the church office for more information.

**For further information on any of the above please contact the church office** on 01223 264707 or [dan@c-b-c.org.uk](mailto:dan@c-b-c.org.uk); or visit our website: [www.c-b-c.org.uk](http://www.c-b-c.org.uk).



**NC**  
AND  
**PLUMBING  
HEATING**

Foston, Cambridge, CB22 6J

C1410 C949 60008 60008

Gas Safe Register\*\* replaces CORG Registrations in GB from 1<sup>st</sup> April 2018

## LOCAL DOMESTIC SPECIALISTS

Gas, Oil & LPG appliances serviced, installed and repaired  
Bathroom design and installation  
All plumbing & heating works undertaken  
Weekend call out service (8am - 5pm)

Andy Day: 07967 095720 | Shaun Rivers: 07967 095721  
Office: 01223 870580 (24hr tel/fax) enquiries@nutcombecambridge.co.uk

**www.nutcombecambridge.co.uk**

## THE COMPLETE **CYCLING** SOLUTION

- Service, repair, and sales.
- Comprehensive workshop facilities with expert mechanics.
- High-end and specialist work, or simple maintenance undertaken.
- Wheelbuilding.
- Family and folding bike sales and advice.
- Easy accessibility from the A14.
- Maintenance Courses.
- Wednesday morning cycling tea and cakes.

37 High Street  
Longstanton  
CB24 3BP

Phone: 01954 789284  
Email: team@biketobe.com  
Web: www.biketobe.com



## COLIN AND LINDSAY BOURNE

Welcome You To  
**The Three Horseshoes**  
South Street,  
Comberton

TEL: (01223) 262252



Hot & Cold Bar  
Meals  
Lunchtime 12 To 2.30  
Evenings 6 To 8.30  
Roast Dinners Served  
Daily  
No Food Served On  
Tuesday and Sunday  
Evenings

Open Mon-Fri  
12 to 2.30 (except  
Tuesday) & 6 to  
11.00  
All day Saturday  
and Sunday



Real Ales  
Games Room  
Large Beer Garden  
Children's Play Area  
Friendly Atmosphere  
Children Welcome  
Booster Baby Seats Available

CREDIT & DEBIT CARDS ACCEPTED  
EXCEPT AMEX & DINERS CARD

## Osteopathy... more than just backs



Back and Neck Pain  
Postural Problems  
Sports Injuries  
Foot Pain  
Headaches  
Babies and Children  
Arthritis and Joint Pain



**01954 28 28 20**

**Cambourne Osteopaths**  
within Monkfield Medical Practice  
[www.cambourneosteopaths.co.uk](http://www.cambourneosteopaths.co.uk)



## NEWS FROM THE MERIDIAN PRIMARY SCHOOL

Opportunity - Creativity - Challenge  
Excellence for All

It always astonishes me how quickly children and staff settle back into the new school year. Within days it was as though we had never been away. By the time you read this all our new reception children will be with us fulltime, after a programme of home visits and gradual staggered entry (not sure who's doing the staggering here!) The PTA put on a lovely picnic welcome lunch in mid-September for new children and their parents, and by the time you read this I am sure the little ones will be old hands at school routines

We are particularly excited about a special event taking place this half term. Although there is an invitation elsewhere in this publication, I would like to take this opportunity personally to invite the whole village to the grand opening of our Habitats Garden. The Eco-action Team are busy planning the event and would love you to join the whole school on **Friday 22 October at 3pm.**

You may recall that the Habitats Garden was our chosen way of redeveloping the walled area which was previously the disused school swimming pool. The aim was to produce a quiet garden with a range of habitats for wildlife which could be used in a wide variety of ways. We want the children to see it as a place to use at breaktimes for quiet contemplation, chatting with a friend or reading a book. We also intend to use it as an outdoor classroom for lessons of all kinds. But, just as importantly, we would like the whole village to feel that it is a resource for them, which groups of all ages can book to use.

A large part of the funding for the garden came from the Big Lottery Fund – and, in fact, the project would have been impossible without that. The school PTA have also provided funding, for which we are extremely grateful, and contractors have given us very preferential rates. It would be impossible to list here all the people who have helped us, but I would like to thank each and every one of them for making this vision a reality.

The garden looks super already and will, no doubt, mature into something even more lovely. I do hope you will be able to join us for the opening so that you can see it for yourselves.

Glennis Virgo, Headteacher



JASON MOORE



## **CARPENTRY & SMALL BUILDS**

Roofing • Floors • Doors • Kitchens supplied & fitted

PVCu Fascia • Soffits • Gutters

*Free estimates*

Call for a friendly and reliable service

Tel: **01223 262561** Mobile: **07939 244453**

Green End, Comberton, Cambs



All aspects of  
Carpentry & Building projects undertaken



City and Guilds qualified and full public liability insurance cover.

## **Irena Spence & Co** Solicitors

**Your local Solicitors offering a client focused value  
for money service**

***We provide a wide range of legal services tailored to  
our clients needs.***

**Call or email us on**

**Tel: 01223 263549**

Conveyancing/residential or commercial:-

Email: [tspilsbury@irenaspencc.co.uk](mailto:tspilsbury@irenaspencc.co.uk)

Probate/Wills/Powers of Attorney:-

Email: [poneil@irenaspencc.co.uk](mailto:poneil@irenaspencc.co.uk)

For : Litigation, Family and child care issues, Personal Injury and  
Employment law email: [mail@irenaspencc.co.uk](mailto:mail@irenaspencc.co.uk)

**5 Green End, Comberton, Cambridge, CB23 7DY**  
**Free Parking/Disabled Access**

Also at  
68-70 Castle Street, Cambridge CB3 0AJ  
Cambridge (01223) 713300  
[www.irenaspencc.co.uk](http://www.irenaspencc.co.uk)

## COMBERTON VILLAGE COLLEGE: A NOTE FROM THE PRINCIPAL

We all tend to have a picture of the school summer holidays as a long stretch of time when school sites are abandoned and children enjoy the freedoms of missing the school routine. It may or may not be associated with 'summer weather'! However, the truth is rarely precisely that. Two particular major exceptions to this picture are worthy of note from this summer holiday at Comberton Village College.

Throughout the summer, anyone passing by the college will have been well aware that very major building work was going on. In practical terms, the summer holidays are a crucial period of time for school building projects. They allow work to take place that would probably be impossible during term time due to its disruptive effect. One example of this was the work that took place to enable ground source heating to be developed for the large new building that is at the front of the school. This has meant that the green area at the front of the school has been dug up and is currently very unsightly. I am pleased to confirm with readers that this is due to be re-instated as a green area in the near future. All the building work has proceeded very well over the summer and is, we are assured, fully on schedule for completion by Easter 2011. This will mean that everything should, as planned, be ready well in advance of September 2011, the date when our first Sixth Form students are due to start with us. As the buildings now begin to take shape around the site, we can see properly the scale and shape of what is coming. It confirms quite what significant and excellent new facilities will be opened soon, especially for our new Sixth Form.

The other specific time over the summer when the school is anything but empty is on the day when public examination results are collected by those who have completed their final examinations and assessments earlier in the summer. This year, GCSE results were distributed two days earlier (on a Tuesday rather than the traditional Thursday) as schools were asked to print out results sent through on-line. This new development did not change the long tradition of excellent GCSE and other Key Stage 4 results for Comberton Village College students. Readers will probably already be aware that every single way of measuring the results (and there are a number different ways of doing this now) indicated that this was a year of new school records. The results were very clearly the best in the school's history at every level: 95% achieved 5+ A\*-Cs; 82% achieved this measure when including English and Maths; and 46% of all grades were either A\* or A. Very few all-ability schools nationally match those exceptional levels of achievement. We are delighted for all the young people and their families who did so very well and wish them all the best for the future.

While the summer vacation is certainly a break for us, it is certainly not a time of inactivity!

Stephen Munday

## **O'MALLEY SOLICITORS**

### **Family Law Specialists**

Divorce • Matrimonial Property & Finances • Co-habitation Disputes  
Civil Partnership Dissolution • Children Matters • Domestic Injunctions •  
Separation Agreements

For a sympathetic and sensitive approach to the most emotional of legal problems, contact us on **01954 202075**.

### **O'MALLEY SOLICITORS**

84 Rampton Road, Willingham, Cambridge, CB24 5JQ  
Tel: 01954 202075 E-mail: [omalleysolicitors@googlemail.com](mailto:omalleysolicitors@googlemail.com)  
Regulated by the Solicitors Regulation Authority  
SRA No: 489236

## ***Barton Beauty*** **@ Barton Hair**

**Manicures £22**

Pedicures £27

**Back Massage from £18**

**Dermalogica** facials from £25

**Plus** waxing, **electrolysis** and lots more

For more information or a price list

**Call: 01223 262386**

or pop in to

Barton Beauty @ Barton Hair Studio  
2A Comberton Road, Barton,  
Cambridge, CB23 7BA

**Stockiest of Dermalogica**

Gift Vouchers available



## THE GRAND PIANO APPEAL AT COMBERTON VILLAGE COLLEGE

**The Comberton Village College (CVC) Trust Fund** was established in 1984. We are made up of parents of past and present students, friends and governors of the College, and members of staff. Our aim is to generate additional funding to support the work of CVC both for its pupils and the wider community. We are a registered charity and the funding we receive is used to improve facilities and equipment at the school.

One of our current major projects is to raise money for a Grand Piano.

- The Comberton Leisure Performance Hall is a magnificent concert venue, which a Grand Piano will enhance enormously
- It will allow the School and Village to attract groups such as choral societies, orchestras and other high quality artists without incurring the expense of hiring such an instrument
- The grand piano will be a wonderful asset to the cultural life of the College and the local community

Our forthcoming fundraising events for the Piano Fund include:

**October 8 – Orchard Ensemble** – This established local chamber-music ensemble offers an evening of relaxing classics featuring the music of Mozart, Dvorak, Chopin and Gordon Jacob. 8.00pm

**October 16 –The Combertones** - our local Dixieland Jazz band, who would like to invite you to an evening of musical entertainment. Supporting music in schools was one of the strong interests of our late band-leader, Keith Jackson, who we would like to remember in this way. 7.30pm

**October 21 – 23 – Sweeney Todd - The Demon Barber of Fleet Street.** A stART Arts production, directed by Ella Lyons. A stranger returns to Victorian London burdened with the weight of the world on his shoulders. Desperate for revenge he sets up his barber's shop above Mrs Lovett's Pie Shop and 'together it was murder'! The cast and crew, made up of people aged 10 to 18, had rave reviews when it was previewed in August and four performances are planned. We will be selling Mrs Lovett's 'special' meat pies in the interval...try them if you dare! 7.30pm (2.30pm matinee Saturday only)

**November 13 –The Cambridge Concert Orchestra** – a varied programme of orchestral music. 7.30pm

**December 4 – Capriccio** (singer, pianist, violin and cello). Music will be a selection of songs from around the world by composers such as Gershwin and Weill as well as instrumental arrangements of Schubert, Piazzolla and Gershwin. The second half of the programme will include some Christmas music including community carol singing. 7.30pm

**December 14– CVC Christmas concert** - Pupils and staff celebrate Christmas with a range of performances from pop to jazz to classical. 7.30pm

Under new  
management!



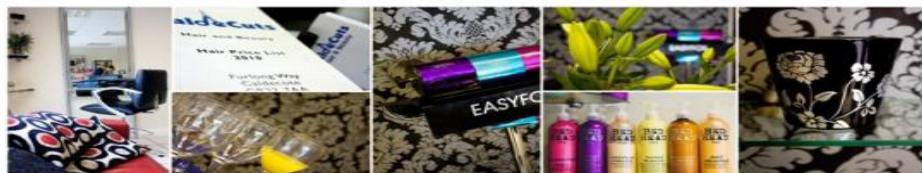
Hair & Beauty  
**OCTOBER Offer**

**Cut & blow dry +**

**Dermalogica facial only £35.00**

**Bed Head – Tigi products 20% off**

- Open 6 days a week
- Late nights available until 8pm
- Loyalty cards
- Parking available
- Friendly atmosphere



Caldecuts | 2 School Court | Furlong Way | Caldecote | CB23 7AA  
01954 211383

\* Offer valid for appointments before 31 October 2010. To claim your discount, when booking quote OCT, Comb and hand this voucher to a member of staff when paying. Cannot be used in conjunction with any other offers.



## John Muir Interiors Ltd

Your local specialist for

### Curtains & Blinds

Free no obligation estimate

### Home selection service

### Services also include:

Valances, Pelmets, tie-backs & cushions

Options of both hand and  
machine making

Supply and fitting of new tracks & poles

For a free home visit

E mail: [info@johnmuirinteriors.co.uk](mailto:info@johnmuirinteriors.co.uk)

OR Phone 01954 214522

Millers Music Centre and Yamaha UK have offered a generous discount of more than 25% on the purchase price. As a result the Appeal has a target of £16,010 to be raised by 31 March 2011. We will be applying for grants where possible. Currently we are awaiting the outcome of an application made to the South Cambridgeshire District Council.

Any donation, however big and small, will be welcomed. You might like to sponsor a particular part of the piano individually or as a group, you can sponsor, for example, large components such as the frame for £500 or the keyboard lid for £400 or choose any number of keys, hammers and strings which are available from just £15 each. To make your selection, please visit:

<http://www.justgiving.com/CVC-Trust2>

Tickets are priced at £5 & £3 (under 16 and unwaged) for each event. They are available from the box office at Comberton Leisure (01223 264444) or via the website [www.combertonleisure.com](http://www.combertonleisure.com)

Please do visit <http://www.info.combertonvc.org/events.cfm> for further and up to date information.

## COMBERTON FRIENDSHIP GROUP

The last meeting of the group was on Thursday September 9<sup>th</sup> and was our annual Harvest Festival which is always good fun. Members donate produce which is auctioned off for us to but back again! As there was a shortage of vegetables this year a lot of the members did baking instead, which was most welcome. A very pleasant afternoon was had by all.

The next meeting is the AGM in October.

## COMBERTON WI

Our July meeting welcomed back Mrs Sandra Barker, who is a basket maker. Sandra gave us a short history of straw hat making and its economic importance in the local area. We then tied our hand at straw plaiting, which gave us an insight into the difficulties of producing even the simplest design of hat.

The summer outing was a guided visit around Wimpole gardens with the head gardener. Members discovered more about the history of the gardens and also found out about the future plans for the development of the garden. Members were pleased to see that our 'Goth Girl' scarecrow had survived the summer but looked rather jaded!

Our speaker in September was Bridget Flanagan who spoke about 'Artists along the Ouse'. Bridget has researched the many artists who visited the area between Huntingdon and St Ives between 1880 and 1930. Artists were attracted by the river which had become used for leisure since the advent of the railways. Houghton Mill and various churches featured heavily in the many attractive watercolour and oil paintings. The area became popular as a good place to sketch and some artists moved in, attracting others to visit and stay. Many artists sold their works locally and some paintings are still in private hands in the

**APPLEWOOD GARDENS**  
LANDSCAPE & GARDENING SERVICES

Applewood Gardens provides design, construction to garden maintenance and clearances, from a one-off visit, to regular contracts.

Selection of the work undertaken:

DECKING . PERGOLAS . FENCING  
TURFING . SEEDING . GRASS CUTTING  
PONDS . WATER FEATURES . FOUNTAINS  
GARDEN CLEARANCE . PRUNING . SMALL TREE WORK  
PATHS . PATIOS . CONCRETING  
and much more....

We pride ourselves on being reliable, competitive and honest.

Call now to arrange a free quotation and to discuss your ideas

on: 01223 842282

or email: ApplewoodGardens@hotmail.co.uk

*Paradise Gardening*

Planting Plans . Maintenance . Design

*From regular maintenance to  
one-off seasonal pruning  
or the complete design service.*

Our Quotations are free  
and come with no obligation.

[www.paradisegardening.co.uk](http://www.paradisegardening.co.uk)

email: [info@paradisegardening.co.uk](mailto:info@paradisegardening.co.uk)

or telephone Colette Bassford on

01223 265605 / 07944 573085

**Finally, a guaranteed solution  
for your flat roof problems,  
proven to last over 40 years!**

**Does your roof suffer from any of these signs?**

Moss growth • Cracks or bumps • Leaks • Expired guarantee •  
Or is it more than 5 years old?

**Stop! Replace it now, replace it permanently  
and prevent misery from a leaking roof.**

Before



After



Unlike felt, RubberBond EPDM will not split, leak or crack and it's tough enough to walk on. Installed in full compliance with the revised Building Regulations of April 2006!

**RUBBERBOND**  
EPDM ROOFING SYSTEMS  
APPROVED INSTALLER



Call **NOW** for your **FREE**, no obligation quotation - valid for 12 months.

**01223 258049**

Lines open 24 hours a day, 7 days a week



[therubberroofingcompany.com](http://therubberroofingcompany.com)

area. The Norris Museum in St Ives holds some. They usually represent bucolic rural scenes, much loved by the Victorians who had moved to cities, and still very popular today.

Date for diary: October 12<sup>th</sup> 'Wildlife Nature Through the Eye of the Camera' with Barry Kaufman-Wright at 7.45 in the Village Hall. This will also be our 70<sup>th</sup> birthday.

## CHILDREN'S CINEMA AT COMBERTON VILLAGE HALL

The monthly Village Cinema evenings at the Village Hall have been welcomed by many as an important source of local entertainment and have quickly established a loyal following. The hardworking cinema committee are committed to maintaining the momentum they have built up and to booking further high quality, popular films for our enjoyment.

Feedback is always welcomed for future films and one of the early suggestions was that of a children's cinema on a Saturday morning. This suggestion certainly struck a chord with those Trustees who spent their childhood Saturday mornings at the cinema. While today's generation of children have countless more entertainment opportunities than in the past, a village cinema for children would provide a unique opportunity for a wide range of children to come together and enjoy the experience of watching films with their friends.

The hall Trustees would welcome any initiative by parents in the village to start such a venture and will provide any technical back up required. A licence would have to be obtained at a cost of £90 to 100 for each film shown and this cost would have to be funded by those attending.

Interested parties should contact the cinema co-ordinator, Sandra Hyde, on 262075.

## COMBERTON WINEMAKERS

The Annual General Meeting of Comberton Winemakers will take place in Comberton Village Hall on Monday October 8<sup>th</sup> at 7-30 pm. At this meeting we will hold our Cup Competition, Wines this year are Dry Sherry and Sweet Parsnip.

On Saturday November 12<sup>th</sup>, our Annual Dinner will be held at the Meridian Golf Club, Toft at 7pm for 7.30pm, Cost is £23.00.

At the November meeting on Monday November 15<sup>th</sup> we welcome Kate Edge, well known Wine Judge and Chairman of the NAWB committee. She will be talking about selecting wines for competitions. Bring along any wines you consider suitable for competition and find out if you are entering the correct class for your wine.

## AN OPEN LETTER TO THE RESIDENTS OF COMBERTON:

I would like to point out to you all that South Street Allotments do not have a 'pick your own' arrangement with the village residents. I have no doubt that

## DWD HOME IMPROVEMENTS



YOUR LOCAL  
CARPENTER AND  
SMALL BUILDER

Carpentry, kitchens,  
fencing, roof repairs,  
interior/exterior painting



No job too small

Insurance work undertaken

25 years experience

Local references available

103a New Road, Haslingfield

For free quotation tel: 872558

or mobile: 07855 579802

## Local graphic designer

Over ten years' experience

- ▶ logos
- ▶ stationery
- ▶ adverts
- ▶ flyers
- ▶ brochures
- ▶ personalised cards
- ▶ invitations
- ▶ photo restoration

*Will manage the  
whole job from  
design to print.*

[http://flavors.me/jez\\_designs](http://flavors.me/jez_designs)

**01223 263403**

[jez.designs@gmail.com](mailto:jez.designs@gmail.com)

## DOMESTIC SPECIALISTS IN ALL PLUMBING AND HEATING.

All gas, oil and LPG boilers repaired, serviced and installed •

Landlord certificates issued • Complete bathroom

installations • Free estimates • Weekend call out service

available • Powerflushing (central heating system cleaning)

• Corgi/ Gas register, Oftec and Water Board approved.



60308

**01223 870580**

Andy Day 07967 095 720

Shaun Rivers 07967 095721

[www.nutcombecambridge.co.uk](http://www.nutcombecambridge.co.uk)

**NC PLUMBING  
& HEATING**



## QUALITY PLASTERING

ALL ASPECTS OF PLASTERING UNDERTAKEN NEW AND  
OLD. RE-SKIMMING, OVER BOARDING, DRY LINING, COVING  
ETC.

FOR A RELIABLE FRIENDLY SERVICE CALL JIM URQUHART  
ON 01223 262612 OR MOB 07887 893075.



the majority of you will have no idea what I am talking about - thank goodness. However this Bank Holiday Sunday afternoon I met a nice young lady with a Scandinavian accent at the allotments carrying an empty carrier bag. She had, I think, intended to fill it with the produce all of us who have allotments had worked very hard to grow. She left the rhubarb she pulled behind when she saw someone watching her. I did not see this but I did see her run after she left the site. We had a conversation whilst she was there and I made the mistake of pointing out my allotment to her. Can I now say to her, and the others who visit in the evening expecting not to be seen, that I have a battery operated camera set up to film the wildlife around my allotment so I suggest she does not join the other people who fill their bags with our produce as already two of us know her.

Incidentally, it is the wrong time of year to pick rhubarb - its means there is none for you to steal next year as the plant is weakened if it is picked now. And you are a lousy liar as well as capable of stealing from pensioners....had you considered that on your quite adequate income judging by the cut of your clothes?

To the others who help themselves to our goods I just want to say that stealing is a crime and last year we involved the local police and will not hesitate to do so again.

Yours sincerely

Marian Gibbens

### BARTON DRAMA GROUP

Barton Drama Group's autumn production is, Plaza Suite, by Neil Simon. It is a comedy set in a room in The Plaza Hotel in New York

In Barton Village Hall from Wednesday November 24th -Saturday November 27th at 8 pm. Tickets from Norma Eaton 01223 263561 £7-50 and concessions £5-50 to include refreshments. Many thanks Helen Newstead

### CYCLING THROUGH BARTON?

#### **A request from Barton Parish Council.**

Many of you may cycle through Barton and will realise that there is no official cycleway in the central part of the village. However, we fully understand that for safety reasons you might decide to cycle on the footway between the Duck Pond area and Kings Grove. May we ask you to make sure that you give precedence to pedestrians and give them absolute priority? We want to avoid injuries to both our elderly and younger residents.

*bartonpcclerk@btinternet.com*

### NOTES OF THE COMBERTON NEIGHBOURHOOD PANEL

Excerpts from the meeting held at Comberton Village College,  
18 August 2010

Inspector Savage introduced Sergeant John Capes who has recently joined the

# Blue Button IT



## HOME COMPUTER SUPPORT

- Repairs & Maintenance
- Broadband Support
- Spares & upgrades
- Free impartial Advice
- Computer tuition
- Microsoft Certified
- No Fix No Fee!

07779 573783

[support@bluebuttonit.co.uk](mailto:support@bluebuttonit.co.uk)

[www.bluebuttonit.co.uk](http://www.bluebuttonit.co.uk)

Based in Cambourne - Mon-Sun 9am-9pm

## CORNISH SCAFFOLDING

EFFICIENT QUALITY SERVICE  
COMPETITIVE RATES  
COMMERCIAL & DOMESTIC  
C.I.T.B. REGISTERED  
OVER 25 YEARS SERVICE



Tel: 01223 265683

Mob: 07890 050189



### Chiropodist

A full chiropody service - in  
your own home - nail care,  
removal of corns and hard  
skin and verruca treatment.

**Susan Krueger BSc.MACh.Pod**

HPC Registration Number CH18476

**01223 207859**



Neighbourhood Policing Team as the Sergeant for the Comberton Panel Area. Sgt. Capes will be based at the new station in Cambourne.

**Tackle anti-social behaviour (ASB) in villages linked to the bus route between Comberton and Cambourne (continuation plan)**

PCSOs have continued to travel along the bus route to act as a visual deterrent and to reassure passengers and staff. Special Constables have travelled in plain clothes along the route. They have intervened in a number of minor incidents on the bus, ranging from bad language to “excitable” behaviour. Evening and afternoon patrol over the weekends have been carried out on the following recreation and green spaces, both in plain clothes and in uniform. Officers have patrolled on foot to reach the more isolated areas of the recreation and green spaces: Comberton Rec. and around both schools, Hardwick, Barton, Toft, Caldecote and Bourn recreation grounds.

**Vehicle Related Offences**

This action plan has been approached on 2 levels:

- 1) Day by day approach, tackling the hot spot areas with short bursts of enforcement during patrol times.
- 2) By a dedicated day of action over a 10 hour shift, officers specifically targeted the highlighted problems.

**Speeding over the last period.**

Barton Road Comberton- 2 tickets – 1 letter

Long Rd Comberton – 3 tickets

The majority of locations suggested by the panel have netted very few prosecutions. Locations within villages mean that officers are very visible and whilst this is a good preventative measure it produces very few prosecutable offences.

Insp. Savage mentioned the new Cambourne Police Station was now open to staff and various teams are now working from there, however, it would not be open to the public until at least the end of September. There will hopefully be an Open Day later in the year.

Insp. Chris Savage went through the current and emerging issues; more details can be found in the Neighbourhood Profile Update document.

**Comberton:** ASB continues to be a bit of a problem but thanks were conveyed to the team for all their work. A car left in the recreation car park had to be locked in after closing time, the following morning the chain had been cut and both chain and padlock have never been found. Incidents like this happen mostly at weekends.

Priorities Agreed:

- Tackle anti-social behaviour at Recreation Grounds in Bourn, Caldecote and Comberton.

**Dates of Future Meetings:**

- 24 November 2010 at Comberton Village College
- 23 February 2011 at Cambourne Church

John Fuller reiterated that road safety is the People’s Priority.

## **W.J. Brown & Son**

**Motor Engineers**

**Your Local Friendly Garage**

**Cross Roads, Comberton**

**tel: 01223 263433**

**Sales - Services**

**Inspections pre-MOT - Travel Inspection**



## **SAUNDERS LANDSCAPES**

**36 School Lane, Toft, Cambs, CB23 7RE.**

**ALL FORMS OF LANDSCAPE CONSTRUCTION UNDERTAKEN**

**TEL: 01223 264113, MOBILE: 07774 127416**

**www.saunderslandscapes.co.uk**

**E-mail: martin.j.place@btinternet.com**

## **BARTON OIL BURNER SERVICES**

**86 CAMBRIDGE ROAD, BARTON, CAMBRIDGE. CB23 7AR**

**ROD AND ROBERT BUTLER  
OIL FIRED BURNER TECHNICIANS**

**SERVICING AND REPAIRS OF  
DOMESTIC OIL FIRED BOILERS**

**TELEPHONE: 01223 262305**



### **HEATING SERVICES**

For the installation, service,  
repair & replacement of gas  
and oil fired appliances.

**Call us today on  
01223 833426**

[www.shelfordheating.co.uk](http://www.shelfordheating.co.uk)  
[sales@shelford-heating.co.uk](mailto:sales@shelford-heating.co.uk)

**CORGI & OFTEC registered**



### **For a competitive quote....**

Home heating oil  
Monthly payment scheme  
Gas oil & diesel  
Premium lubricants  
Fuel card services

**01223 846846**

[www.shelfordenergy.co.uk](http://www.shelfordenergy.co.uk)  
[sales@shelford-energy.co.uk](mailto:sales@shelford-energy.co.uk)

## CAMBRIDGE BUILDING SOCIETY

It has come to our attention that the Society's Comberton branch will not be available until April 2011.

### ROSIE IN STITCHES

The Friends of the Rosie Hospital are helping to make the Rosie a more comfortable environment for mothers and babies. If you have any spare ribbons we are in urgent need of your donation.

Spread the cost of Christmas gifts by starting early at the following events:

#### **Community Market, The Octagon, Bar Hill, Cambridgeshire**

Saturday 2nd October 10.30am to 12.30pm

Saturday 6th November 10.30am to 4.00pm

Saturday 4th December 10.30am to 12.30pm

#### **Apple Festival, Palace Green, Ely, Cambridgeshire**

Saturday 16th October 2010 - 10:00am - 4:00pm

#### **Addenbrooke's Outpatients, Cambridge**

Friday 15<sup>th</sup> October 10.00am to 4.00pm

Tuesday 2<sup>nd</sup> November 10.00am to 4.00pm

We are registered for donations through eBay at [http://donations.ebay.co.uk/charity/charity.jsp?NP\\_ID=35736](http://donations.ebay.co.uk/charity/charity.jsp?NP_ID=35736) and some of our items are for sale in our eBay Charity Store at <http://shop.ebay.co.uk/rosieinstitches2010/m.html>

There are many more offers available so visit the Special Offers page at [www.easyfundraising.org.uk/forh](http://www.easyfundraising.org.uk/forh) for more details and to find the eVoucher codes.

### AUTUMN LAWN CARE & RENOVATION

Following this summers conditions most lawns are in need of some renovation work to help the grass to recover before the weeds and moss take advantage.

#### Actions required in Autumn

- Scarify and over seed lawn - Will remove dead grass and thatch
- Aerate lawn – Relieves compaction and prepares soil for sowing extra seed
- Apply top dressing- Improves evenness and covers newly sown seed
- Autumn feed required- Puts new life and colour back in to the lawn

Some of the above tasks can be carried out by the lawn owner; other tasks may need some professional intervention.

For more information about ProLawnCare Ltd services on offer

Phone 01480 812393

[info@prolawncare.co.uk](mailto:info@prolawncare.co.uk) "...[www.prolawncare.co.uk](http://www.prolawncare.co.uk)

"..for that Lawn you've longed for"

**AUTUMN OFFER: 25% OFF OF AERATION (SPIKING) THIS MONTH.**

**CALL NOW (FIRST COIME FIRST SERVE) LIMITED TO  
FIRST 10 RESPONSES**

## Cambourne Self Storage

- Cost effective, secure, convenient self-storage
- Various size units to suit household & business storage
- CCTV monitored site with access at your convenience
- NEW SITE AT BOURN AIRFIELD



- Your personal unit
- Store your goods, lock up, keep the key.
- 5 min from Cambourne

01954 717444

[www.cambourneselfstorage.co.uk](http://www.cambourneselfstorage.co.uk)



HOME IMPROVEMENTS  
& MAINTENANCE

Call Stuart Tunstall for  
Bespoke Cupboards & Shelving,  
Carpentry, Joinery,  
Painting & Decorating,  
Plastering, Tiling and much more...

For a free estimate  
telephone 01223 263664 / 0795 7101 814  
or email [him@thetunstalls.myzen.co.uk](mailto:him@thetunstalls.myzen.co.uk)

FREE  
Lawn  
Health  
Check



## Amazingly green lawns for surprisingly little!

We provide a specialist, professional service  
for people who are serious about their lawns

- Free Lawn Health Check -  
an in-depth survey of your lawn
- Free Programme Proposal -  
a unique solution for your lawn
- The finest feeds, fertilisers and weed  
control products available along with  
expert knowledge

For further information call us free on

**01480 812 393**

or email [info@prolawncares.co.uk](mailto:info@prolawncares.co.uk)

**ProLawnCare**

[www.prolawncares.co.uk](http://www.prolawncares.co.uk)

## S E DAVEY

Plastering, Ceramic Tiling,  
Floor Screeding, Coving

TEL: 01954 210941

MOB: 07711 541799

## QUALIFIED CHIROPODIST

Mr Leonard Kirkby **MSSCh MBChA**

Registered Member of the British  
Chiropody & Podiatry Association

Visiting Practice

All instruments autoclaved

Mobile: 0787 098 3347

Home: 01480 451493

## PLANNING FOR SPRING

This is the one time of year when gardeners really have to plan six months ahead. Spring bulbs need to be planted now. This year I intend to make a specific area dedicated to spring flowers. The Royal Horticultural Society London show in February inspired me to try something new. Instead of just having bulbs strategically placed round the garden, I will make a special bed under an old tree by creating two levels using logs to hold layers of soil behind them. This approach should create zones for the plants. The planting scheme will be determined by two factors; contrasting colour and expected flowering time. No doubt, a hard winter may interfere with the best laid plans.

### **Small spring flowers**

My planting area is small, in partial shade and approximately arc-shaped. This restriction means that the plants need to be low growing but at the same time cover the soil area effectively. The bulbs that I have chosen would also do well in a rock garden. There will be a mixture of old favourites such as snowdrops and clumps of white, yellow and purple crocuses; these will flower early. Crocuses always have a problem with mice, so I will have to buy more than needed. *Narcissus* 'February gold' will be early and look good with its backswept petals. These will be planted close to the blue *Chionodoxa forbesii* 'Blue giant' which grows up to 10 inches tall with a dozen flowers per stem. I particularly like the look of the small *Iris reticulata* 'Gordon'; the flowers are light blue, tipped with mid-blue on the petal falls and with a nice orange blotch for contrast. I have chosen *Anemone blanda* 'White splendour' for its white daisy-like flowers to appear in March-April. *Scilla siberica* 'Spring beauty' has deep blue flowers that are bell shaped; it will do well in shade and flowers in April-May. I hope to place it close to two *Narcissus* species that flower in April, a small one called *N.* 'Hawera' with small cups and swept back petals, and the larger *N.* 'Pipit' with yellow flowers that then turn white; four flowers are carried on each stem and they are fragrant. *N.* 'Rip van Winkle' will be a bit of fun with unusual spiky petals.

### **Autumn work to be done**

The dry summer followed by a wet August and September has held back the autumn flowers, but they are now providing a good show. Once the flowering is over and the plants have started to die down towards the end of October, the garden will need attention. Cut back the dead material and open up spaces for the spring bulbs to come through; don't leave it until spring. Hedges will need their final cut of the year. Decide which trees need trimming back before leaf fall, make a note of them and prune in January. Small gardens can easily get overgrown. If plants have under performed, are they really worth keeping? I will throw away two weak rose bushes and re-work the bed where they were. Sometimes it is kind to your garden to be ruthless.

R.T. Choke

# tai chi

for health and relaxation



New beginners' class  
starting in...

## Cambourne

Thursday 16 September  
7.30pm  
The Vine Primary School  
Upper Cambourne  
Cambs CB23 6DY

New classes also starting in  
Cambridge, St Neots and  
elsewhere – please visit our  
website for details



The ancient Taoists were  
renowned for their study of the arts of health and  
longevity. The **Taoist Tai Chi™** internal art of tai chi  
chuan conveys the essence of this tradition to the  
modern world as a very special and effective  
form of health training, one that can work  
on the physical, mental and spiritual  
dimensions of our being.

ALL CULTURES MOVING TOGETHER IN HARMONY

Just turn up on the  
day, or for more information  
call Andy on 01480 830435  
or visit our website

40  
YEARS / ANS

taoist.org.uk

A registered  
charity 1053425 / SC039513



## BOOK YOUR XMAS FUNCTION & XMAS LUNCH NOW

Your Xmas Staff Party, Social Club Outing,  
Family Occasions & Dining  
We cater for ALL

Always a warm and friendly welcome  
Fine ales, quality home-cooked meals  
Large dining area and clubhouse to cater for up to 100 people  
Lakeside terrace over looking the 18<sup>th</sup> green  
Free Parking for a 100 cars

Or Why Not Come in and join us for **SUNDAY LUNCH**  
Available every week - Book in Advance

[www.golfsocieties.com](http://www.golfsocieties.com)

Comberton Road, Toft, Cambs, CB23 2RY. Clubhouse 01223 264 700 / Pro Shop 01223 264 702

THE CHALLENGE  
SPONSORED BY COSTCUTTER STORES

DOCTOR, DOCTOR I'm not feeling myself.....

Each of the following actors is famous for playing a particular doctor role. In the list below however they have unfortunately been miscast. Please help them. (using the usual AA,BB system).

LEW AYRES  
FREDERICK MARCH  
DE FORREST KELLY  
TIM CURRY  
OMAR SHARIFF  
BILL SIMPSON

MILBURN STONE  
NIGEL BRUCE  
DAN O'HERLIHY  
GEORGE ARLISS  
REX HARRISON  
VINCENT PRICE  
PETER SELLERS  
WILLIAM HARTNELL  
JOSEPH WISEMAN  
KIRK DOUGLAS

DR.SYN(1937 FILM)  
DR.NO  
DR.STRANGELOVE  
DOC HOLLIDAY(1957 FILM)  
DR. FINLAY  
DOC GALEN ADAMS(GUN  
LAW)  
DR.JEKYLL  
DR.McCOY  
DOCTOR WHO  
DOCTOR ZHIVAGO  
DR.KILDARE  
DR.CALIGARI  
DR.FRANK-EN-FURTER  
DR.PHIBES(1972 FILM)  
DOCTOR DOOLITTLE  
DR.WATSON (1939 FILM)

Entries please to Costcutter, Library or Green End Surgery by  
14<sup>th</sup> October. The prize of £5, generously donated by Nayna &  
Vijay, is to be spent in store.

Name.....

Address.....



### **Extra Support**

Does your child need extra help with Numeracy or Literacy?

Do you have particular aims for your child's future?

Quality support given to 4 to 8-year-olds by highly experienced and sympathetic teacher.

**☎ 01223 263215**

### **SKELDALE FLOCK OR ROUGH FELL SHEEP**

Bring a bit of Cumbria to  
your table

Lamb available, fresh or frozen  
in quantities to suit your indi-  
vidual needs.

Also Gloucester Old Spot Pork.

Contact: Liz or Stuart Mat-  
thews - tel: 01223 260088 or  
07794633817

All our animals are reared with  
care on our farm at Barton and  
you are welcome to visit.

### **Local graphic designer**

**Over ten years' experience**

- ▶ logos
- ▶ stationery
- ▶ adverts
- ▶ flyers
- ▶ brochures
- ▶ personalised cards
- ▶ invitations
- ▶ photo restoration

**meridian**  
 **DESIGN**

*Will manage the  
whole job from  
design to print.*

**01223 263403**

jez\_thomas@yahoo.com or see online at  
[www.jeremythomas.talktalk.net/meridian.html](http://www.jeremythomas.talktalk.net/meridian.html)

## **Conifers for hedging in most sizes up to 8ft.**

Also flowering shrubs, climbers and hardy perennials.

All at grower's prices.

Open 7 days 10.00 - 6.00

Saunders Nurseries West Street Comberton 01223 262238



## THE CHALLENGE

### SEPTEMBER RESULT & WINNERS

Alphabetical Countries.....

Highest possible was 48. Only one O, one Q and no X's.  
(See Costcutter shop window for winner's list )

WINNER: JOAN BRIGHTING.  
BARTON ROAD

# **VILLAGE CAFÉ at the VILLAGE HALL**

Open every Tuesday

10.30 - 12 noon

Meet up with friends or make new ones.

Families welcome!

Coffee/Tea/Squash

Hope to see you there soon.



Would you appreciate help with small jobs around the home, garden or in the wider village?

Isaiah58 involves young people from local churches helping out in the village community.

We have moved furniture, trimmed hedges, weeded gardens, swept leaves and painted bus shelters....

No project too small!

If you have a possible project for the team please call

Jonathan Catley, 01223 263508

07971 758041

jonathan.catley@hotmail.co.uk

We don't charge or ask for any donation for the help.

It is part of us putting our faith into action.

*Isaiah58 is a project run by WCCYM  
(West Cambridge Christian Youth Ministries)*

### COMBERTON LIBRARY

Monday	2.00pm - 7.00pm
Tuesday	Closed
Wednesday	10.00am - 1.00pm 2.00pm - 5.00pm
Thursday	Closed
Friday	2.00pm - 7.00pm
Saturday	10.00am - 1.00pm
Sunday	Closed

The Village College, West Street, Comberton, Cambridge, CB23 7DU  
Tel: 0845 045 5225

### RECREATION GROUND ROTA OCTOBER TO DECEMBER 2010

Gate Open 8-30am to 1/2 hour after lighting up time Monday to Sunday inclusive.

September 20th	to	October 3rd	Mr & Mrs M Waters
October 4th	to	October 17th	Mr & Mrs A. Clarke
October 18th	to	October 31st	Mr & Mrs M. Sims
November 1st	to	November 14th	Mr R Sewell
November 15th	to	November 28th	Mr & Mrs M. Waters
November 29th	to	December 12th	Mr & Mrs A. Clarke
December 13th	to	December 26th	Mr & Mrs M. Sims
December 27th	to	January 9th 2011	Mr R. Sewell

Access on foot is not affected

# CONTACT'S USEFUL TELEPHONE NUMBERS

## Doctor Parker & Partners

58 Green End, Comberton.....	for appointments: 262500
.....	for prescriptions: 262399
Dr. Tobin & Partners, Bourn Surgery - Emergencies .....	(local call) 01954 719313
Alms Hill, Bourn.....Surgery appointments .....	(local call) 01954 719469
NHS-Child & Family Team, Sackville House, Sackville Way, Cambourne .....	01954 282830
Ash Croft Veterinary Surgery, 169 St Neot's Road, Hardwick. (local call) .....	01954 210250
Chair, Parish Council: Miss Chris Westgarth, 85 Barton Road .....	263242
Clerk to the Parish Council: Mrs Gail Stoehr .....	
Comberton Parish Council, PO Box 857, Comberton .....	01954 210241
(for planning applications see South Street notice board)	
Village Hall Lettings Secretary, Mrs Stephanie Young .....	262365
Nursery Way Sheltered Housing .....	264434
Comberton Playgroup .....	262373
Meridian County Primary School .....	262423
Comberton Village College .....	262503
CVC Community Education Office .....	264721
Comberton Library .....	08450 455225
Baptist Church - Rev. Stephen Henderson, Church Office .....	264707
Community Team - Hazel Charge .....	262827
Comberton Catholics - Rev. Robert Joyce .....	350787
St Mary's Church - Revd Mike Booker .....	260095
The Village Help Scheme	
Chairman: Janet McCabe .....	263387
Transport: Gill Redman .....	262246
If unavailable, try: Joan Wells .....	262746
or Barbara Urquhart .....	263364
Emergency Home Help: Rachel Thompson .....	262422
Gardening: Margaret Storey .....	262748
Cambridge Water (water) .....	01223 706050
Anglian Water (sewerage) emergency .....	0845 7145145
Water Emergency .....	01223 403000
Environmental Health Services .....	08450 450 063
Street Light Failure reporting telephone hotline .....	0800 253 529
South Cambridge District Council (S Harangozo, District Councillor) .....	264340
Cambridge County Council (Fiona Whelan, County Councillor) .....	01954 212725
Social Services, Comberton (Emergency out of hours) .....	264466 (01733 561370)
Benefits Agency, Chesterton Road, Cambridge .....	545200
Wood Green Animal Shelter (stray/lost dogs at SCDC on 443000) .....	01480 830014
Age Concern (Cambridge Information and advice line) .....	01354 696677
Samaritans .....	364455
Parkside Police Station .....	08454 564564
Comberton Ramblers .....	01223 262940

Village website: [www.comberton.org.uk](http://www.comberton.org.uk)

Comberton Contact Small Adverts website: [www.combertoncontact.org.uk](http://www.combertoncontact.org.uk)

## COMBERTON VILLAGE HALL LETTING CHARGES

### Main Hall (Village and Affiliated Community Group Use)

Private (except evening social events) £15.

Affiliated Group (except evening social events) £12.50

Weekday evening social events (Mon-Thurs) £40

Weekend evening social events (Fri/Sat/Sun) £60

Wedding reception (all day to midnight) £200

### Private (Village) and Affiliated Community Group Use

Meeting Room or Community Room £10

Committee meetings in Meeting/Community Room (Affiliates) £5

### Main Hall (Non-Village & Non-Affiliated Community Group Use)

Private (except evening social events) £25

Non-Affiliated Group (except evening social events) £20

Weekday evening social events (Mon-Thurs) £60

Weekend evening social events (Fri/Sat/Sun) £90

Wedding reception (all day to midnight) £300

### Private (Non-Village & Non-Affiliated Community Group Use)

Meeting Room or Community Room £15

### Community Commercial Use (for adults or children)

Main Hall (excluding Fri/Sat/Sun evenings) £30

Meeting Room or Community Room £20

Commerical Use (per hour) On application  
Charges are per session and include use of kitchen.

Sessions: 9am to 1pm, 2 to 5.30pm, 6 to 10.30pm (Midnight for Fri/Sat/Sun). Premises to be vacated by end of session.

Annual affiliation fee £10 due 1st January.

"Community Group Use" – local groups operating on a non-commercial basis.

Groups working with children and/or vulnerable adults will need to have child protection and vulnerable adult policies and procedures in place.

Bookings should be made with

## COMBERTON SURGERY

### OPENING TIMES:

Reception Mon-Fri 8:30am -12:30pm

Tel: 262500 1:30pm - 6:30pm

Weekend Emergencies contact CAMDOC,  
tel: 01223 464242

(Phone goes to night service at 6.00pm - if you need to be seen after 6.00pm, please call CAMDOC, tel: 01223 464242)

Dispensary reception 8.45am - 12.30pm  
1.30pm - 6.30pm

Saturday \* 8.30am - 10.30am

(\*collection of pre-ordered drugs only)

Dispensary phone calls only

(Tel: 262399) Mon-Frid 10.30am - 12.30pm  
3.30pm - 6.00pm

Repeat Slips preferred.

### BOURN SURGERY OPENING TIMES:

#### Surgery

Monday - Friday 9.00am - 11.00am  
4.00pm - 6.00pm

For out of hours emergencies call: CAM-DOC on 01954 719313

#### Pharmacy

Monday - Friday 9.00am - 1.00pm  
4.00pm - 6.00pm

There is a branch of the surgery in Great Gransden at midday on Tuesdays, held at the Reading Room, Fox Street. No appointment is needed.

Village Hall Lettings Secretary  
Mrs Stephanie Young  
Tel: 01223 262365 (before 9pm)

Printed by Victoire Press Ltd,  
1 Trafalgar Way, Bar Hill, CB3 8SQ  
Tel: 01954 781919