

## COMBERTON CONTACT TEAM

Editor & Designer	Anne Horler	20 Green End	01223 264683
	email: <a href="mailto:editor@combertoncontact.org.uk">editor@combertoncontact.org.uk</a>		
Treasurer	Liz Sexton	20 Barrons Way	01223 263786
Advertising	email to: <a href="mailto:editor@combertoncontact.org.uk">editor@combertoncontact.org.uk</a>		
Distribution	Jenny Brown	91 Barton Road	01223 262495
Please send all articles to Anne at the above address, or by email in plain or rich text.			

## CONTENTS

Comberton Allotments & Gardens Ass. Autumn Show . . . . .	front cover
Autumn Show 2010 details . . . . .	inside front cover
A Message from the Editor . . . . .	3
Comberton Cinema . . . . .	3
Beavers are Coming to Comberton . . . . .	5
Leaders Needed . . . . .	5
Little Footsteps . . . . .	7
Comberton Crusaders . . . . .	7
Coffee Morning . . . . .	9
Village Cafe. . . . .	9
Comberton Players AGM . . . . .	11
Parish Council Report . . . . .	13
St Mary's Church. . . . .	17
Catholic Church . . . . .	17
Comberton Baptist Church . . . . .	19
Meridian School . . . . .	21
Annual Supper and Entertainment . . . . .	23
Comberton Friendship Club . . . . .	23
The Show Must Go On . . . . .	23
Arts & Crafts Exhibition . . . . .	25
Wizard of Oz . . . . .	27
Comberton Neighbourhood Panel Meeting . . . . .	27
Neighbourhood Profile Update . . . . .	31
Blue Bins . . . . .	33
Open Cambridge. . . . .	37
Challenge Answers . . . . .	38
Festival of Ideas . . . . .	39
Challenge . . . . .	40
Autumn Lawn care & Renovation . . . . .	41
Friends of the Rosie . . . . .	41
Bourn to Run . . . . .	inside back cover
Quiz Night . . . . .	back cover

## ADVERTISING RATES FOR COMBERTON CONTACT

**from 1<sup>st</sup> June 2009**

Changes will be effective at the time of booking or re-booking advertisements.

	<b>Size (w x h)</b>	<b>Annual</b>	<b>Single Edition</b>
<b>Whole Page</b>	122mm x 183mm	£400	£44
<b>Three-fifths Page</b>	122mm x 109mm	£240	£27
<b>Two-fifths Page</b>	122mm x 72mm	£160	£18
<b>One-fifth Page</b>	122mm x 35mm	£ 80	£ 9
	60mm x 72mm	£ 80	£ 9
<b>One-tenth Page</b>	60mm x 35mm	£ 50	£ 6
Coloured back cover (one-off) Whole page		£88	Half page £44

## DATES FOR YOUR DIARY

Every Tuesday	Comberton Café at the Village Hall
Every Tuesday	Table Tennis in Village Hall
Every Tuesday 2.00pm	Slow 'n' Low in Village Hall
Every Wednesday 10.00 to 11.30	Comberton Toddler Group at Village Hall
Every Wednesday evening	Tang Soo Do at Meridian School
1st and 3rd Sunday of each month	S.E.F at Comberton Baptist Church
Every Tuesday	Young Enterprise after school at Meridian School
1 <sup>st</sup> 2 <sup>nd</sup> and 4 <sup>th</sup> Monday Evenings at 7.00pm	Carpet Bowls at Village Hall.
4th Tuesday of each month at 8.00pm	Comberton Antiquarian Society at Village Hall

## 30TH AUGUST ST MARY'S FETE AT THE CHURCH SEPTEMBER 2010

7th September	7.30pm	Induction of Fr Peter at OLEM
8th September	7.30pm	Parish Council Meeting
9th September	2.30pm	Friendship Club Harvest Bring & Buy V.Hall
11th September		Roald Dahl's Rhymes & Verses at the Library
11th September	3.00pm	Reading Challenge Presentations - Library
12th September		Bridge the Gap Charity Walk
14th September	7.30pm	Comberton Players AGM Village Hall
14th September	8.00pm	Adult Auditions for Pantomime Village Hall
15th September	7.30pm	Film: The Blind Side at the Village Hall
18th September		Friendship Group Coffee Morning
21st September	6.30pm	Children's Auditions for Pantomime Village Hall
24th September	10.00 - 12.00	Coffee morning at Orchard House
28th September	8.15pm	Bourn Players auditions at Performance Hall.

## OCTOBER 2010

10th - 12th October	Open Cambridge Weekend
20th - 31st October	Festival of Ideas
23rd October 7.30pm	Film Sherlock Holmes at Village Hall

## DECEMBER 2010

10th & 11th December	Aladdin
----------------------	---------

## A MESSAGE FROM THE EDITOR

As we did not have an issue of Contact in August it is not surprising that I have received so many contributions to the magazine this month that it is slightly thicker than usual. Enjoy!

The small adverts website is gathering momentum. More people are using it to advertise their unwanted goods and some are now selling. Do look at the website for things you may be searching for. The convenience of buying something you want in the village beats Ebay, especially as there is no charge for using our website.

On a personal note I want to thank those people who have bought things from the plant and produce stall outside my house. I have been able to send £100 to the Neo-Natal Unit at the Rosie Hospital who are desperately in need of more equipment for their tiny premature charges. Visiting my twelve week premature grandson brought it home to me how very lucky we are to have such comprehensive medical facilities at Addenbrookes and the Rosie Hospitals. I was also astonished at how many little prems. were coming into the Rosie all the time and how professional and caring the staff are.

I hope you have enjoyed the beautiful weather we had earlier in the summer and that your gardens have now recovered from it. Please keep your contributions coming. We want to hear any news you have.

# COMBERTON CINEMA

PRESENTS

Oscar winning performance by  
Sandra Bullock in

## The **BLIND SIDE**

12A Wed. 15th September

Robert Downey Jr. & Jude Law in

## **SHERLOCK HOLMES**

12A Wed. 20<sup>th</sup> October

Doors open 7.30

Film starts 7.45

Tickets cost £3.50

On the door

For further information contact Sandra Hyde Tel: 262075

*These events are sponsored by Comberton Village Hall Trustees*

# ROTHWELLS CARPET CLEANING

The most thorough cleaning achievable

Local family firm

Established 1993

We lift and move all furniture

Only pay if & when satisfied - no quibble

For a firm, fair and fully inclusive price

Phone Max Campbell

**01223 832 928**

**07711 675 613**

If you use us, you'll recommend us!

## **FIVE <sup>★ ★ ★</sup> STAR** Pest Control

**FAST, EFFECTIVE AND  
SAFE CONTROL OF  
EVERY PEST PROBLEM  
IN DOMESTIC,  
COMMERCIAL AND  
AGRICULTURAL  
PREMISES**

**(01223) 264999**

4 Fox's Way, Comberton, Cambs CB23 7DL



## FRAMING TALENT

Professional friendly

quality picture

FRAMING

and mount cutting service

also

Frame Restoration

Telephone: 01954 210154

to discuss

your requirements

SUSIE JACQUES

33 ELLISON LANE HARDWICK

vertical  
venetian  
roller  
roman  
conservatory  
velux  
curtains  
awnings

free measuring  
and fitting

**10% EXTRA DISCOUNT**  
to readers of Comberton Contact

**cambridgesunblinds**

**Cambridge**

**01223 460192 / 01954 211037**

**www.sunblinds.co.uk**

**James Pym**  
Painter and Decorator

9 Haslingfield Road

Harlton

Cambridge

CB23 1ER

Telephone 01223 263223

Over 20 years Experience  
Domestic & Commercial work undertaken

**RON GLASBY**  
**PAINTER & DECORATOR**  
**FIRST CLASS WORK**  
**GOOD RATES - FREE ESTIMATES**  
**01223 246859**



**are coming to Comberton  
in September !  
Thursdays 5.30pm-6.30pm**

**Beavers are the youngest members of the  
Scout Movement and are boys and girls  
between the ages of 6 and 8**

**To register your interest please send details of**

**Child's Name and date of birth to  
[combertonbeavers@hotmail.co.uk](mailto:combertonbeavers@hotmail.co.uk)**

**We will contact you when there is a place available**

## LEADERS NEEDED

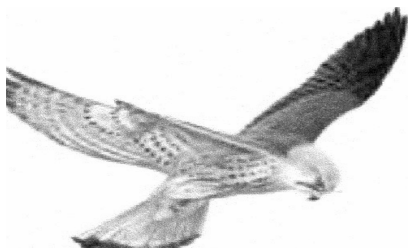
Rainbows, Brownies and Guides in Toft District are looking for volunteers to help at their meetings.

Toft District covers Barton, Coton, Comberton, Toft, Caxton and the Gransdens.

If you could help on a regular basis, as a non-uniformed helper, a trained guider or in an administrative role, please get in touch. Anybody who volunteers will be asked to provide references and be willing to undergo a CRB check.

The hours are as many as you are willing and able to spare.

If you are interested in helping in any way or have daughters wishing to join, please contact Linda Warner. 01223 262854 email [chris.warner@btinternet.com](mailto:chris.warner@btinternet.com)



**Geoff Wilson**  
**Carpentry & Joinery Ltd**  
**Domestic & Commercial Property Repairs**  
**and Maintenance**  
Comberton, Cambs  
Tel/Fax: 01223 262698  
Mobile: 07806 491059  
[www.geoffwilsoncarpentryandjoineryltd.co.uk](http://www.geoffwilsoncarpentryandjoineryltd.co.uk)

## **JASON KIRBY**

*Professional Painting & Decorating Ltd*

- All aspects of painting & decorating under taken -  
Internal & external, residential and commercial
- All work guaranteed
- Quality & reliability at competitive rates
- References available
- City & Guilds qualified
- Full public liability Insurance

*Tel/Fax: 01954 231222*

Mobile: 07966 174431  
[asonkirbyltd@gmail.com](mailto:asonkirbyltd@gmail.com)

*A professional service from start to finish*



**Friendly, Expert Instruction**  
**at Competitive Rates**

**Call Anytime On:**  
**01223 262667**  
**07976 264387**  
**[www.jpsm.co.uk](http://www.jpsm.co.uk)**

**59 The Valley, Comberton,**  
**Cambridge CB23 7DF**

## **Plumbing**

**Ian Stonebridge**

**Your local plumber**  
**tel: 263586 / mob: 07866 278497**

### **Trousers too long? Skirts too tight?**

Small alterations undertaken  
incl. headings and hems for curtains,  
nets and voile.

Call Heidi Crockford on 01223 263008

Thank you to all those families who came and supported our Summer Roadshow.  
We had lots of fun and it was great meeting new families!

**New Term Sessions**

Tuesdays 10-11.30am **Stay & Play for Under 2's** Toft Village Hall (not every  
Tuesday so please check website/poster)

Tuesdays 2-3.30pm **Stay & Play** Caldecote Pre-School (term time only)

Thursday 2<sup>nd</sup> September **First Aid Course** is now FULLY BOOKED

Friday 3<sup>rd</sup> September 10am **Buggy Push** around Comberton starting at the  
recreational park

Thursday 14 October 10.30-11.30 **Soft Play** Caldecote Village Hall

**All sessions are free**

## COMBERTON CRUSADERS

UNDER 8'S FOOTBALL TEAM REQUIRES A FEW MORE  
PLAYERS TO JOIN THE TEAM.

PLEASE CONTACT DARREN HARVEY TEL. 01223 262676



### Chiropodist

A full chiropody service - in  
your own home - nail care,  
removal of corns and hard  
skin and verruca treatment.

**Susan Krueger BSc.MACh.Pod**

HPC Registration Number CH18476

**01223 207859**

## **ALOE VERA**

*Discover the benefits of Aloe Vera with Forever Living Products - the world's largest and best grower of Aloe Vera. An extensive range from Health Drinks to Skincare products with a 60-day 'satisfaction or your money back' guarantee. Millions of delighted customers - humans and animals. For more details, literature and free sample sachets, please telephone Mary Benwell, your local Independent Distributor of FLP on 01223 870743*

## **Nails & Beauty by Allison**

One to One treatments,  
Tranquil setting in Hardwick.  
Gel Nails, Waxing, Make up,  
etc

01954 211094 / 07753 211384

[www.nailsandbeautybyallison.co.uk](http://www.nailsandbeautybyallison.co.uk)

## **MERCER TREE SERVICES**

Professional Arboricultural  
Contractors

01799 520044

£5 million Public Liability Insurance

NPTC Qualified  
Members of AA and FCA  
Seasoned logs and woodchip

## **Heating Oil?**

*Are you paying too much?*

Ring me before you buy  
Deliveries direct to you  
by national / local suppliers  
Jeremy Cole (01954) 719452

# **agricole**

**You'll warm to the savings**

## **DAVEY BUILD**

**Extension ▪ Renovations  
Repairs ▪ Alterations**

**-CLEAN-  
- GOOD QUALITY WORKMENSHP-  
-VERY RELIABLE SERVICE!-**

**FREE ESTIMATES AND ADVICE!**

**NO JOB TOO SMALL!**

**TEL: 01954 210941  
MOB: 07711 541799**

**6 Ellison Lane, Hardwick, Cambridge.**



# COFFEE MORNING

in aid of



at Orchard House,  
Royston Lane, Comberton  
on Friday 24<sup>th</sup> September  
10.00am to 12 noon.

**Please Come!**

## **VILLAGE CAFÉ at the VILLAGE HALL**

Open every Tuesday

10.30 - 12 noon

Meet up with friends or make new ones.

Families welcome!

Coffee/Tea/Squash

Hope to see you there soon.

## SPORT & REMEDIAL MASSAGE THERAPY

at 'Dragonfly' the beautiful day  
spa at Burwash Manor, Barton.  
Sport Massage can help treat/prevent  
sporting injuries.

In life, painful conditions can result from  
postural/occupational stresses, massage  
will help to identify and alter these.

Stuck for gift ideas...Sports Massage is  
the PERFECT present for that person who  
has everything!

For September only, new clients will  
receive 10% off their first massage, with  
prices starting from £30.00.

For bookings or further information,  
please call Teresa on 077398 36325 or  
email: tbufton@hotmail.com

## STEAMROLLER IRONING SERVICES



48 hour turnaround, Good reliable service  
Hangers & bags supplied (returnable)

**PRICE 1LB IN WEIGHT = £ 1.25  
(MIN £10)**

**CALL 07742 319631 / 01954 210672**

**MAKE** space

**JAMES WARD**  
DESIGN AND DECORATION

shelves      cupboards      tables  
*made to measure   fitted or freestanding   painted or natural*

01223 214031 ■ 0780 153 3124

[www.jameswardart.co.uk](http://www.jameswardart.co.uk)

**ideas realised**



## LOCAL DOMESTIC SPECIALISTS

Gas, Oil & LPG appliances serviced, installed and repaired

Bathroom design and installation

All plumbing & heating works undertaken

Weekend call out service (8am - 5pm)

Andy Day: 07967 095720

Office: 01223 870580 (24hr telefax)

Shaun Rivers: 07967 095721

enquiries@nutcombecambridge.co.uk

[www.nutcombecambridge.co.uk](http://www.nutcombecambridge.co.uk)

**Computer  
Maintenance**

**Selecting and  
Installing a Computer**

**Repairs**

**Advice on Installing  
Home Networks**

**Fault Finding**

**For help, call me, Brian Girling,  
on 01223 208529 (Wimpole)**

**E-mail [bg@moncraft.co.uk](mailto:bg@moncraft.co.uk)**

## DAVID PECK PAINTER & DECORATOR

INTERNAL & EXTERNAL DECORATING  
Quality Work Guaranteed

Competitive Prices

Ring for Free Estimate

Tel: 01480 830898 Mob: 07742 542974

30 Cheere Way, Papworth Everard,  
Cambs CB23 3NZ

## COMBERTON PLAYERS AGM

The **Annual General Meeting** will be held in the Village Hall at **7.00pm on Tuesday September 14<sup>th</sup>**, in the Village Hall Meetings Room. Any residents who are interested in participating in productions either on or off stage are cordially invited to attend. We are keen to attract new members. Any queries, contact Glynis Ellis (secretary) on 262214

The annual pantomime on December 10<sup>th</sup> and 11<sup>th</sup> will be

**Aaddin** ☆

Come and join other new members of Comberton Players in this year's pantomime production. Parts for pantomime are not generally long, and could even be non-speaking if you want to take part but don't want to talk on stage. The only things we need are a commitment to attending the Tuesday rehearsals and availability for the week of the main rehearsals at the beginning of December. The performances will be on Friday 10<sup>th</sup> and Saturday (afternoon and evening) 11<sup>th</sup> of December.

Comberton Players continues to attract new members and pantomime is an excellent way to find out if there really is an actor in everyone!

### AUDITIONS

will be at **8pm on September 14<sup>th</sup>** for adults, following the AGM and at **6.30 on September 21<sup>st</sup>** for children, and will take place in the Old Village Hall

We look forward to seeing you and if you need further information contact

**Gillian Gresham on 262867.**

# WS PLUMBING & HEATING

- FULL HEATING INSTALLATION
- BOILER SERVICES
- PLUMBING & HEATING REPAIRS
- BATHROOM INSTALLATION

**RELIABLE & FRIENDLY SERVICE ■ ALL WORK UNDERTAKEN**



CALL FOR A FREE QUOTE

**01954 212134 / 07834 562532**

## **WARTON & CLARK SKIP HIRE**

6 HARDWICK ROAD, TOFT CB23 7RQ

2,3,4,6 & 8 Yard Skips

### **BUILDING MATERIALS AVAILABLE**

**Top Soil sold from our Yard at Toft**

Free delivery and prompt service. All major credit cards accepted

**Tel: 01223 263287 / 264202 Fax: 01223 262685**

## D.J. Downes Accountancy & Taxation

Small Business Specialist  
Individuals, partnerships,  
limited companies,  
self-assessment, accounts, VAT

For a no-obligation, free initial  
interview call  
01223 872722

## **Law Storage Ltd**

*Secure storage in South Cambridgeshire*

**Home-owners and Businesses**

Self store - you have access when you need it with  
your own key

Collection and delivery service also available

**Short or long term storage from 4 weeks minimum**

secure, dry units - closed-circuit TV - seven days a week  
flexible capacity - boxes available

*for more information and prices go to our website*

**[www.lawstorage.co.uk](http://www.lawstorage.co.uk)**

**Call 01223 874 629**

**email: [paul@lawstorage.co.uk](mailto:paul@lawstorage.co.uk)**

Local, flexible storage solutions for you

# PARISH COUNCIL REPORT

from the Clerk

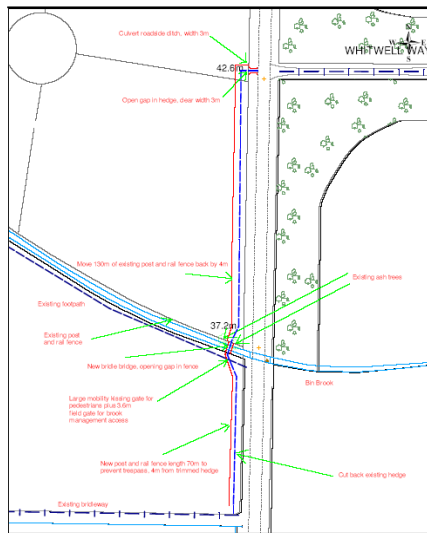
The Parish Council met on Wednesday 14 July 2010

## Parish Council – Councillor Vacancy

Comberton Parish Council still has a member vacancy and invites any parishioner who would like to serve on the Parish Council to write to or email the Clerk. The Parish Council still hopes to fill the vacancy at the earliest opportunity.

## Long Road Bridleway

The Parish Council was delighted to hear that the County is introducing a scheme to improve countryside access in the parish of Comberton. The bridleway will run parallel to the road, as shown below and work should start after harvest.



Bridleways are for walkers, horse riders and cyclists and normally marked with a blue arrow.

You have the right to walk along a bridleway, to ride or lead a horse, and to ride a bicycle.

Cyclists must give way to walkers and horse riders on a bridleway.

## ***Parking problems associated with CVC – B1046 road including junction with Kentings***

In response to a request from a resident the Parish Council will write to the County Council urging it to install double yellow lines on the B1046 near the junction with Kentings and a single yellow line restricted hours no waiting or parking during the times when children are being dropped off and collected from the Village College.

# Expertise on your doorstep

Comberton Village College **Comberton**  
Cambridge CB23 7DU Tel 01223 727885  
Mon, Tues and Fri 10am-3pm

**C A M B R I D G E**  
**B U I L D I N G S O C I E T Y**  
Time to keep your money close to home

Head Office Administration Centre PO Box 232 51 Newmarket Road Cambridge CB5 8FF  
Tel 0845 601 3344 [www.cambridgebs.co.uk](http://www.cambridgebs.co.uk)



## **Jefferys, Houghton & Co** **CHARTERED ACCOUNTANTS**

The Commercial Centre  
6 Green End, Comberton, Cambridge CB23 7DY  
Tel: Cambridge (01223) 262128 Fax (01223) 262287

E-Mail: [jennifer@jefferys-houghton.freeserve.co.uk](mailto:jennifer@jefferys-houghton.freeserve.co.uk)  
Website: [www.jefferys-houghton.co.uk](http://www.jefferys-houghton.co.uk)

For all your accountancy needs, including accounts preparation for sole traders, partnerships and small companies, personal, business, company taxation and full payroll service.

Fax and photocopying facilities also available

### **Business Hours**

**Monday-Friday**  
**9:00am -1:00pm 2:00pm – 5:00pm**

### *Floodlights at the Village College*

At the Annual Parish Meeting there were several complaints that the floodlights were being left on even when no-one was using the facility. The College has apologised and said that they have communicated with the relevant parties and they have asked for their apologies to be conveyed to the residents. They will endeavour to ensure that the lights are turned off when the facilities are not in use.

### *Litter in the village*

You will all recall the litter pick that took place earlier this year when many bags of litter was collected. The College has kindly agreed to raise the awareness of its students at the start of the autumn term, in an effort to encourage the maintenance of a tidy environment within the community but everyone can help by picking up litter if you see any. Many thanks.

### *Moore Stephens – Annual Audit certificate and opinion*

Moore Stephens report “On the basis of our review, in our opinion the information contained in the annual return is in accordance with the Audit Commission’s requirements and no matters have come to our attention giving cause for concern that relevant legislation and regulatory requirements have not been met”.

### *Parish Council members contact details*

Miss Chris Westgarth (Chairman)	85 Barton Road	263242
Dr Janet McCabe (Vice-Chairman)	3 Westcroft	263387

Miss Amanda Bacon	Arial View, 92B Swaynes Lane	264711
Mr John Cornell	16 Barrons Way	263566
Mr Ted Halford	69 Swaynes Lane	262531
Mr Andrew Hollick	73 Swaynes Lane	263089
Mrs Sandra Hyde	57 Long Road	262075
Mr Simon Moffat	86 Swaynes Lane	
Mrs Dorothy Morison	5 The Valley	263027
Mr Richard Rowlands	43 West Street	264508
Mr Tom Serby	Home Farm, 250 Barton Road	262303
Mr Jock Walsh	38 Fox’s Way	263225

As the Parish Council does not meet in August **the next Parish Council meeting will be on Wednesday 8 September 2010 at 7.30pm in the Village Hall.** All parishioners are invited to attend the meeting and the first ten minutes or so is open to residents to ask questions or make comments and observations on Comberton matters or on items on the agenda. If the matter is or has already been under discussion a response may be given at the meeting otherwise the matter will be tabled for fuller discussion at the next or a future meeting.

**HONDA**  
POWER EQUIPMENT

**HAYTER**  
MAKERS OF THE FINEST MOWERS

**Westwood**

**Husqvarna**

**TORO.**



**25kg Aquasol Water Softener  
Tablets Only £8.00 per bag  
or 3 bags for only £21.00  
Dry dog food from only £9.50 per 15kg**

**Sales, Service & Parts.**

**Mark Weatherhead**

**St. Neots Road, Hardwick, Cambridge  
Tel: 01954-210355 Fax: 01954-210236**



## THE PARISH CHURCH OF ST. MARY, COMBERTON

**Team Rector, and Priest-in-Charge** of St Mary's, Comberton, St Andrew's, Toft and Caldecote with Childerley: Revd. Michael Booker tel: 01223 260095

[www.combertonchurch.co.uk](http://www.combertonchurch.co.uk)

**Churchwardens** Mr M.R. Evans 82 Green End Tel 263215

Mrs M Jenkins 80 West Street Tel 263751

Please contact Mike Booker about arrangements for **Baptisms, Funerals, Weddings** and the readings of Banns.

### **Services and Events at St Mary's in September**

#### **Bank Holiday Monday - Don't forget St Mary's Fete!**

Sunday 5th                      8.00am      Holy Communion (Prayer Book) at St Mary's

9.30am      Holy Communion

Sunday 12th                    8.30am      Holy Communion (Prayer Book) at St Andrew's Toft

9.30am      Holy Communion and baptism

Sunday 19th                   8.00am      Holy Communion (Prayer Book) at St Mary's

9.30am      Holy Communion

Sunday 26th                   9.30am      **Back to Church Sunday** - worship for all ages

**Have you just got out of the habit of going to church, or maybe have not been for years and are not quite sure about coming on your own for the first time? The last Sunday in September is Back to Church Sunday, with a special invitation to come and join churches all over the country. St Mary's will be having a simple, friendly service - you're very welcome, especially if you haven't been for a long time.**

**St Mary's Church building** is open all day every weekend, not only when there are services. Please feel free to come in at any time, to sit, pray, think or simply enjoy the quiet.

## THE CATHOLIC CHURCH OF OUR LADY AND THE ENGLISH MARTYRS

Hills Road, Cambridge, CB2 1JR

01223 350787

The Catholic Church of Our Lady and the English Martyrs (OLEM) serves much of the south and west of Cambridge.

Detailed below are the normal times of masses at weekends

Sunday Vigil Mass on Saturday evening:-

5.00 pm Cambourne (In the new church)

6.00 pm Bar Hill

6.00 pm OLEM

Sunday Masses at OLEM

# FIREWOOD



Ideal for wood burners and open fires

Dry/cut to size

Delivered to your door in  
1 ton capacity dumpy bag.

**£30** per bag!!

07531 232688

## Peter Oakes

### Tree Surgery



Providing qualified, experienced  
and friendly staff

for all aspects of tree surgery work.

Supplier of logs, wood chips  
and fencing materials.

Hedge trimming and fencing work  
also undertaken.

**Tel: 01954 214510**

email: oakestreesurgery@aol.com

## OPTOMETRIST

**D.J.Ireland, 2 Ivy Field, Barton**

***Sight Testing, Contact Lenses***

***Wide Range of Frames***

**For an appointment phone 263117**

**FREE  
Lawn  
Health  
Check**



**Amazingly green lawns  
for surprisingly little!**

We provide a specialist, professional service  
for people who are serious about their lawns

- **Free Lawn Health Check** -  
an in-depth survey of your lawn
- **Free Programme Proposal** -  
a unique solution for your lawn
- The finest feeds, fertilisers and weed  
control products available along with  
expert knowledge

For further information call us free on

**01480 812 393**

or email [info@prolawncare.co.uk](mailto:info@prolawncare.co.uk)

**ProLawnCare**



[www.prolawncare.co.uk](http://www.prolawncare.co.uk)



8.00 am  
9.30 am (Children's)  
10.45 am (Sung)  
12.15 pm (Polish)  
5.00 pm (Folk)  
6.15 pm (Latin)

Full information is on the parish website [www.olem.org.uk](http://www.olem.org.uk)

Our parish priest – Mgr Tony Rogers, is taking a year's sabbatical to complete his final year of study for a M.A. in Liturgy. He left us at the end of August, having been our parish priest since 1994. Fr. Tony first came to OLEM as a curate in 1974, moving on to open the new parish church of St Philip Howard in Cherry Hinton Road. Fr Tony will be replaced by Mgr Peter Leeming who comes to us from St Mary's parish in Ipswich. Fr Peter was also a curate at OLEM for a few years from 1983. The induction for Fr Peter will take place on Tuesday 7<sup>th</sup> September at 7.30 pm at OLEM.

Another former curate of OLEM, Fr Pat Cleary, is also returning to Cambridge as parish priest at St Lawrence's Church, Milton Road.

## *You are Welcome at Comberton Baptist Church*

**SUNDAY SERVICES:** Our morning services begin at 10.30 am - 12 noon and feature a mixture of traditional and contemporary music, engaging topics and a variety of speakers. Refreshments are served after the service. Children stay for the first part of this service and then have the opportunity to go to their teams in the 'The Lighthouse!'



**PARENTS WITH INFANTS:** At CBC we want to make everyone feel welcome, this includes our youngest guests. We have a crèche available during the service where parents with young babies can go if their children become restless – there is also a monitor so you can see and hear and still feeling part of the service.



**CHILDREN & YOUNG PEOPLE:** The **Lighthouse** @ CBC are groups for children and young people aged 2-17 years. For the under 2's there is also a crèche available. **S.E.F** is a group for teenagers aged 14-17 which meets every Sunday evening. Here young people can make friends and explore their faith together.



**JUNIOR CHURCH** is an exciting new programme for children and young people aged 2-13 years, with a newly formed group for 11-13yrs. Packed with great activities, craft, bible stories, singing, games and lots more...

**Where:** Comberton Baptist Church (in the centre behind the church)

**When:** Every fourth Sunday of each month

**Time:** Doors open at 10.15am with activities starting at 10.30-11.45am

**NC**  
AND  
**PLUMBING  
HEATING**

Foston, Cambridge, CB22 6J

C1410 C949 safe 60008 60008

Gas Safe Register\*\* replaces CORG Registrations in GB from 1<sup>st</sup> April 2009

## LOCAL DOMESTIC SPECIALISTS

Gas, Oil & LPG appliances serviced, installed and repaired  
Bathroom design and installation  
All plumbing & heating works undertaken  
Weekend call out service (8am - 5pm)

Andy Day: 07967 095720 | Shaun Rivers: 07967 095721  
Office: 01223 870580 (24hr tel/fax) enquiries@nutcombecambridge.co.uk

**www.nutcombecambridge.co.uk**

## THE COMPLETE **CYCLING** SOLUTION

- Service, repair, and sales.
- Comprehensive workshop facilities with expert mechanics.
- High-end and specialist work, or simple maintenance undertaken.
- Wheelbuilding.
- Family and folding bike sales and advice.
- Easy accessibility from the A14.
- Maintenance Courses.
- Wednesday morning cycling tea and cakes.

37 High Street  
Longstanton  
CB24 3BP

Phone: 01954 789284  
Email: team@biketobe.com  
Web: www.biketobe.com



## COLIN AND LINDSAY BOURNE

Welcome You To  
**The Three Horseshoes**  
South Street,  
Comberton

TEL: (01223) 262252



Hot & Cold Bar  
Meals  
Lunchtime 12 To 2.30  
Evenings 6 To 8.30  
Roast Dinners Served  
Daily  
No Food Served On  
Tuesday and Sunday  
Evenings

Open Mon-Fri  
12 to 2.30 (except  
Tuesday) & 6 to  
11.00  
All day Saturday  
and Sunday



Real Ales  
Games Room  
Large Beer Garden  
Children's Play Area  
Friendly Atmosphere  
Children Welcome  
Booster Baby Seats Available

CREDIT & DEBIT CARDS ACCEPTED  
EXCEPT AMEX & DINERS CARD

## Osteopathy... more than just backs



Back and Neck Pain  
Postural Problems  
Sports Injuries  
Foot Pain  
Headaches  
Babies and Children  
Arthritis and Joint Pain



**01954 28 28 20**

**Cambourne Osteopaths**  
within Monkfield Medical Practice  
[www.cambourneosteopaths.co.uk](http://www.cambourneosteopaths.co.uk)

**Comberton Baptist Church, Green End Comberton**  
**For more information please call Donna on 01223 264707 or 01954 211259**

**ALSO ON THE 4<sup>th</sup> SUNDAY:** of every month running alongside Junior Church we will be having special short services between 10:30 - 11:45 am followed by refreshments in the church centre. We'll be looking at a range of issues – our theme this season is *Why? 7 Difficult Questions*.



**PRAYER & COUNSELLING:** After each morning service members of CBC's Prayer Team will be available at the front of the church to pray with you regarding any needs you may have. CBC also offers confidential counselling on an ongoing basis, please contact the church office for more information.

**For further information on any of the above please contact the church office** on 01223 264707 or [dan@c-b-c.org.uk](mailto:dan@c-b-c.org.uk); or visit our website: [www.c-b-c.org.uk](http://www.c-b-c.org.uk).



## NEWS FROM THE MERIDIAN PRIMARY SCHOOL

Opportunity - Creativity - Challenge  
Excellence for All

By the time you read this we will be fully involved in our new school year. Children will be getting used to their new teachers (and vice versa!), those children joining us in Reception will be becoming familiar with school through gradual increase of the time they spend with us, and all the staff will have planned exciting and stimulating activities for the year.

Something we are particularly looking forward to this year is extending our children's experience of lives which are different from their own. You may remember that we have already set up a link with a school in The Gambia through the Lisa Kent Memorial Trust. The children in KS2 raised money for the school during their 'Africa Week' last term, but we know that the children in The Gambia have a lot to give us too, not in monetary terms but in the widening of our understanding and relationships. This is a relationship we intend to continue and extend.

We are also setting up a link with another school – this time in the United Kingdom. Keir Hardie School is a large primary in the London Borough of Newham, so their context is very different from our own. Both schools are very keen to learn from each other, and this month the leadership teams in both schools will begin planning ways of linking the schools (and, most especially, the children) to mutual advantage.



JASON MOORE



## **CARPENTRY & SMALL BUILDS**

Roofing • Floors • Doors • Kitchens supplied & fitted

PVCu Fascia • Soffits • Gutters

*Free estimates*

Call for a friendly and reliable service

Tel: **01223 262561** Mobile: **07939 244453**

Green End, Comberton, Cambs



All aspects of  
Carpentry & Building projects undertaken



City and Guilds qualified and full public liability insurance cover.

## **Irena Spence & Co** Solicitors

**Your local Solicitors offering a client focused value  
for money service**

***We provide a wide range of legal services tailored to  
our clients needs.***

**Call or email us on**

**Tel: 01223 263549**

Conveyancing/residential or commercial:-

Email: [tspilsbury@irenaspence.co.uk](mailto:tspilsbury@irenaspence.co.uk)

Probate/Wills/Powers of Attorney:-

Email: [poneil@irenaspence.co.uk](mailto:poneil@irenaspence.co.uk)

For : Litigation, Family and child care issues, Personal Injury and  
Employment law email: [mail@irenaspence.co.uk](mailto:mail@irenaspence.co.uk)

**5 Green End, Comberton, Cambridge, CB23 7DY**  
**Free Parking/Disabled Access**

Also at  
68-70 Castle Street, Cambridge CB3 0AJ  
Cambridge (01223) 713300  
[www.irenaspence.co.uk](http://www.irenaspence.co.uk)

On a similar theme, I mentioned at the end of last term that we were about to receive visits from both South African and Japanese students. The South African students were, of course, being hosted by Comberton Village College but we were delighted to have them visit for a day to demonstrate some exciting dancing and teach it to the children. The Japanese students came from a language school and they visited us to demonstrate origami (which the children loved!) and share a few words of Japanese. Some were even in traditional dress, which was stunning.

I often think about the futures our children will have as adults. One thing I am very sure about is that they will be well travelled citizens of the world, and I have no doubt that several will work thousands of miles away from Comberton. That being the case, it is important that even very young children begin to understand the diversity and complexity of our world. I am hoping that these links we are putting in place will go some way towards achieving that.

Glennis Virgo - Headteacher

## ANNUAL SUPPER AND ENTERTAINMENT

The Village Hall Committee would again like to thank everyone who helped to make our annual supper and entertainment successful. We are very grateful to have had the invitations printed, desserts provided, lifts given, help in the very busy kitchen and great entertainment to round off the evening.

Thanks also to our guests for coming, and we look forward to seeing them next year.

## COMBERTON FRIENDSHIP CLUB

At the July 8<sup>th</sup> meeting we had a talk and demonstration by our chairlady, Sue, on their Norwegian cruise. Sue and John took the Aurora to the Arctic Circle. All of this was very interesting and informative, one of the favourites being Nyallsund and seeing whale, porpoises and puffins.

August 12<sup>th</sup>, our annual summer lunch, was held once again. A great spread was laid on by the committee members.

September 9<sup>th</sup> is the next meeting at 2.30pm which is the Harvest Bring and Buy which is always good fun. On September 18<sup>th</sup> we are holding a coffee morning with mostly nearly new goods. All proceeds go to a charity to be decided at the time. If you are interested in coming along to the meetings please contact Sue Allin on 262990.

## THE SHOW MUST GO ON

***Witness for the Prosecution by Agatha Christie. Village Hall 2<sup>nd</sup> & 3<sup>rd</sup> July***  
Comberton Players overcame that thespian nightmare when a leading member of the cast, Rupert Wood, was taken very ill on the day of the first night. The Director, Alan Lodge, read the part and the cast gave a credible performance leading up to the usual Christie surprise at the end. Joan James (Janet MacKenzie) gave a star performance as the victim's housekeeper expecting to be remem-

## **O'MALLEY SOLICITORS**

### **Family Law Specialists**

Divorce • Matrimonial Property & Finances • Co-habitation Disputes  
Civil Partnership Dissolution • Children Matters • Domestic Injunctions •  
Separation Agreements

For a sympathetic and sensitive approach to the most emotional of legal problems, contact us on **01954 202075**.

### **O'MALLEY SOLICITORS**

84 Rampton Road, Willingham, Cambridge, CB24 5JQ  
Tel: 01954 202075 E-mail: [omalleysolicitors@googlemail.com](mailto:omalleysolicitors@googlemail.com)  
Regulated by the Solicitors Regulation Authority  
SRA No: 489236

## ***Barton Beauty*** **@ Barton Hair**

**Manicures £22**

Pedicures £27

**Back Massage from £18**

**Dermalogica** facials from £25

**Plus** waxing, **electrolysis** and lots more

For more information or a price list

**Call: 01223 262386**

or pop in to

Barton Beauty @ Barton Hair Studio  
2A Comberton Road, Barton,  
Cambridge, CB23 7BA

**Stockiest of Dermalogica**

Gift Vouchers available



bered in the will. She is the longest serving member of our drama groups and her skill always shines.

In spite of the trauma of the previous night there was no sign of collapse on the second night. Rupert (Sir Wilfred Roberts)) bravely returned to give a fine performance as the suave barrister at the top of his profession. Joan again amazed us all with her consummate acting. Steven Weaver (Leonard Vole), in a return to the stage after many years, was a thoroughly believable defendant protesting his innocence in the story and to the audience but astonishing us all in the end. We hope he will return to the Comberton stage to give us many assured portrayals. Cindy O'Connell (Romaine Heilger) charmed and foxed the story cast and audience alike. Was she, or was she not really in love with her husband Leonard?

Glynis Ellis (Miss Myers) as the prosecution barrister had the job of trying to undermine Sir Wilfred with all his reputation and this she did with her crafty insinuating tone. In a courtroom play there are inevitably many supporting parts. Sir Wilfred had his protective Chief Clerk dragon in Sue Nelmes (Miss Carter). Gill Gresham (Miss Mayhew) was a thoroughly reliable support solicitor, Rick Nelmes (Judge), John Gresham (Usher and Detective), Chris Westgarth (Inspector Hearne), Petrina Lodge (Dr. Wyatt) and Sam Richardson (Mr. Clegg) gave excellent support to the central plot and not just as cardboard cut outs but believable characters.

And then there was the enigmatic Kynara Lodge (Greta and Girl) who transformed herself from mousy typist to flamboyant vamp who gets her man and side steps the law? Wee the typist and the Girl the same person or two different characters played by the same skilful actress? Or maybe your reviewer is just a thickie?

Thanks to the Director, Alan Lodge, and all the back stage and front of house support, and the skilful costuming for a grand evening's entertainment.

Michael Thompson

## ART AND CRAFTS EXHIBITION IN THE VILLAGE HALL

On July 10<sup>th</sup> & 11<sup>th</sup> the Hall was host to an Art & Crafts Exhibition organised by the Monday Studio which meets each week in the Village Hall. There were



twenty eight exhibitors almost all of whom were Comberton residents .

Exhibits ranged from paintings in a variety of media and styles, photography, jewellery, wooden toys, wood carving, quilting and various forms of stitch work, Norwegian knitting, walking sticks and shoe horns, card making including cards from the artists own work.

Under new  
management!



**15% off your appointment\***

for 'Comberton Contact' readers

- Open 6 days a week
- Late nights available until 8pm
- Parking available
- Friendly atmosphere



Caldecuts | 2 School Court | Furlong Way | Caldecote | CB23 7AA  
01954 211383

\* Offer valid to appointments booked before 30 September 2010. To claim your discount, quote 'Comberton Contact' when booking your appointment and hand this voucher to a member of staff when paying. Cannot be used in conjunction with any other offers.



In all cases the items on display were created by the exhibitors, several of whom gave demonstrations of their skills and described how their work was achieved. There was a large number of visitors who cannot have failed to be impressed by the work on display. Congratulations to the organisers and exhibitors.

*Malcolm Wright*

## WIZARD OF OZ

Bourn Players are delighted to announce that we will be performing WIZARD OF OZ on 31st March and the 1st and 2nd April 2011 in The Performance Hall at Comberton Village College. Based on the L Frank Baum's children's story about Dorothy Gale's adventures in Oz, and featuring the music from MGM's iconic film, the show is sure to be great entertainment.

Are you interested in taking part? We are looking for children (year 6 and above) and adults. To introduce the story, the characters, and the songs, we're holding an Introduction to the Show event on Tuesday 28th of September at 8.15 at The Comberton Performance Hall (to be confirmed.)

For further details please check the Bourn Players web-site

[www.bournplayers.org.uk](http://www.bournplayers.org.uk)

Terry Wall.



## COMBERTON NEIGHBOURHOOD PANEL MEETING

### Consultation items

#### **Waste review launched**

<http://camweb2/ChiefExecsBlog/Lists/Posts/Post.aspx?ID=3427>

The Government's review of waste policies has been formally launched today. Opening a call for evidence, Environment Secretary Caroline Spelman called on businesses, households, communities, and local authorities in England to contribute their views.

The review will look at what policies are needed to reduce the amount of waste generated and to maximise reuse and recycling, while also considering how waste policies affect local communities, individual households and businesses.

Some of the areas the review will consider include:

- \* How voluntary 'Responsibility Deals' with businesses can play a role in waste reduction and more efficient use of resources;
- \* How best to encourage and incentivise individuals, businesses and communities to produce less waste and recycle more;
- \* How government can work with local councils to increase the frequency and

**APPLEWOOD GARDENS**  
LANDSCAPE & GARDENING SERVICES

Applewood Gardens provides design, construction to garden maintenance and clearances, from a one-off visit, to regular contracts.

Selection of the work undertaken:

DECKING . PERGOLAS . FENCING  
TURFING . SEEDING . GRASS CUTTING  
PONDS . WATER FEATURES . FOUNTAINS  
GARDEN CLEARANCE . PRUNING . SMALL TREE WORK  
PATHS . PATIOS . CONCRETING  
and much more....

We pride ourselves on being reliable, competitive and honest.

Call now to arrange a free quotation and to discuss your ideas

on: 01223 842282

or email: ApplewoodGardens@hotmail.co.uk

*Paradise Gardening*

Planting Plans . Maintenance . Design

*From regular maintenance to  
one-off seasonal pruning  
or the complete design service.*

Our Quotations are free  
and come with no obligation.

[www.paradisegardening.co.uk](http://www.paradisegardening.co.uk)

email: [info@paradisegardening.co.uk](mailto:info@paradisegardening.co.uk)

or telephone Colette Bassford on

01223 265605 / 07944 573085

**Finally, a guaranteed solution  
for your flat roof problems,  
proven to last over 40 years!**

**Does your roof suffer from any of these signs?**

Moss growth • Cracks or bumps • Leaks • Expired guarantee •  
Or is it more than 5 years old?

**Stop! Replace it now, replace it permanently  
and prevent misery from a leaking roof.**

Before



After



Unlike felt, RubberBond EPDM will not split, leak or crack and it's tough enough to walk on. Installed in full compliance with the revised Building Regulations of April 2006!

**RUBBERBOND**  
EPDM ROOFING SYSTEMS  
APPROVED INSTALLER



Call **NOW** for your **FREE**, no obligation quotation - valid for 12 months.

**01223 258049**

Lines open 24 hours a day, 7 days a week



[therubberroofingcompany.com](http://therubberroofingcompany.com)

quality of rubbish collections;

- \* Future infrastructure needs, including the role of energy from waste and anaerobic digestion; and

- \* How business and household waste is collected, sorted and recycled.

People can contribute to the review through the Defra website, by responding to the call for evidence or taking part in an interactive debate on waste policies.

Information about the Review, including the

Terms of Reference and call for evidence, can be found on DEFRA's website at:

<http://www.defra.gov.uk/corporate/consult/waste-review/index.htm>.

**Ends 9<sup>th</sup> September 2010**

### **Libraries review:**

Cambridgeshire County Council, like all local authorities, is facing a very difficult future economically due to the national recession, and as a result all services are required to make significant budget savings over the next 3 financial years. In Libraries this means saving more than £2 million, more than a quarter of our total budget.

Whilst we are doing our best to minimise the impact on front line public services, it will be impossible to make this level of savings without some reductions.

We have put forward a range of proposals for transforming services to meet budget savings including: increasing income, cutting costs, reconfiguring the mobile library service, exploring possible new governance arrangements, and investigating a new model for service delivery based on introducing self service machines into all libraries, reducing the numbers of paid staff, and working more closely with local communities. These proposals were endorsed by County Councillors at their Cabinet meeting on 5th July 2010.

If we are unable to meet the savings required with all of these measures, then unfortunately we will need to consider whether some library closures are necessary. However this is a final resort and we will do everything we can to avoid this step; no libraries have been identified for closure at this stage.

It is true that the County Council is carrying out a review of library provision in Cambridge city and the surrounding area. This follows the opening of the new Central Library, and acknowledges the high density of libraries in the city and surrounding area (6 libraries within the city boundary, plus others in the immediately surrounding area), as well as the impact of expected housing and population growth around the fringes of the city. The review is required in order to plan the most cost effective pattern of provision across this area for the future. Again, no libraries have been identified for closure.

I appreciate that for library customers and staff this is an anxious time, and that no-one wants to lose their library. Please do get involved in our public consultation which will take place for 3 months over the summer, involving a roadshow, questionnaire, and public meetings, we want to hear your views. Further details will be available from your local library and our web site-

## DWD HOME IMPROVEMENTS



YOUR LOCAL  
CARPENTER AND  
SMALL BUILDER

Carpentry, kitchens,  
fencing, roof repairs,  
interior/exterior painting



No job too small

Insurance work undertaken

25 years experience

Local references available

103a New Road, Haslingfield

For free quotation tel: 872558

or mobile: 07855 579802

## J & S Contractors

Driveways: tarmac, concrete,  
block paving.

All types of groundwork undertaken

Call for a free estimate.

Tel: 01223 263006/573165

07801 814376/07711 850578

27 Bakers Close, Comberton, Cambs

*Full public liability insurance cover.*

## DOMESTIC SPECIALISTS IN ALL PLUMBING AND HEATING.

All gas, oil and LPG boilers repaired, serviced and installed •

Landlord certificates issued • Complete bathroom

installations • Free estimates • Weekend call out service

available • Powerflushing (central heating system cleaning)

• Corgi/ Gas register, Oftec and Water Board approved.



60308

**01223 870580**

Andy Day 07967 095 720

Shaun Rivers 07967 095721

[www.nutcombecambridge.co.uk](http://www.nutcombecambridge.co.uk)

**NC PLUMBING  
& HEATING**

## QUALITY PLASTERING



ALL ASPECTS OF PLASTERING UNDERTAKEN NEW AND  
OLD. RE-SKIMMING, OVER BOARDING, DRY LINING, COVING  
ETC.

FOR A RELIABLE FRIENDLY SERVICE CALL JIM URQUHART  
ON 01223 262612 OR MOB 07887 893075.



please use the link below.

**The closing date for this consultation is 30th September 2010.**

<http://www2.cambridgeshire.gov.uk/db/pressrel.nsf/6fcbd4565a583c6480256b52004254fd/af2cd82e8943623780257773004c9345?OpenDocument>

## NEIGHBOURHOOD PROFILE UPDATE

### Comberton Panel

#### **August 20**An Introduction to Anti-Social Behaviour (ASB) in South Cambridgeshire

It has been noted from recent South Cambridgeshire Neighbourhood Panel Meetings that Anti-social behaviour (ASB) issues are at the forefront of public concern. To address these concerns, this document will now mainly focus on ASB issues and will aim to give greater detail of the problems faced in each ward. As a result, included in this document will be a breakdown of ASB types as well as a summary of the issues raised by the public when reporting incidents. A summary of emerging issues within crime will still be provided.

When an incident is reported, it is given a Closure Class which groups the incident under specific categories. The specific closure classes for those incidents defined as ASB are included in table.1

*Table.1 ASB Closure Class Definitions*

ASB	Description
AS02.2	Street Drinking
AS03.1	Begging/Vagrancy
AS04.1	Prostitution related activity
AS05.1	Abandoned Vehicle (not stolen/obstruction)
AS05.2	Vehicle Nuisance/Inappropriate Veh use
AS06.0	Noise
AS07.1	Litter/Drugs Paraphernalia
AS07.2	Inappropriate - Use/Sale/Possession of Fireworks
AS07.5	Rowdy/Nuisance - Neighbours
AS07.6	Rowdy or Inconsiderate Behaviour
AS08.1	Hoax Call to Emergency Services
AS09.1	Animal Problems
AS10.1	Malicious/Nuisance communication
AS10.2	Regular caller - HIST INFO
AS11.1	Trespass
AS12.1	Prejudice Incident

#### **1. Previous Priorities & Engagement Activity**

**Tackle anti-social behaviour (ASB) in villages linked to the bus route between Comberton and Cambourne (continuation plan)**

**Objective            Implement preventative measures along the A428 corridor**

# Blue Button IT



## HOME COMPUTER SUPPORT

- Repairs & Maintenance
- Broadband Support
- Spares & upgrades
- Free impartial Advice
- Computer tuition
- Microsoft Certified
- No Fix No Fee!

07779 573783

[support@bluebuttonit.co.uk](mailto:support@bluebuttonit.co.uk)

[www.bluebuttonit.co.uk](http://www.bluebuttonit.co.uk)

Based in Cambourne - Mon-Sun 9am-9pm

## CORNISH SCAFFOLDING

EFFICIENT QUALITY SERVICE  
COMPETITIVE RATES  
COMMERCIAL & DOMESTIC  
C.I.T.B. REGISTERED  
OVER 25 YEARS SERVICE



Tel: 01223 265683

Mob: 07890 050189

## Sport and Remedial Massage Therapy

Deep tissue massage therapy for muscular injuries and soft tissue damage, injury prevention and recovery, postural tension and imbalances, and chronic muscular pain.

Effectively releases muscle tension, length and flexibility, and restores mobility to joints.

Ruth Watson (BTEC Professional Diploma, Level 5, Clinical Sport and Remedial Massage Therapy), based in Great Shelford, can travel to you for convenience. Call 07894 965284 or email [ruth.sport-therapy@yahoo.co.uk](mailto:ruth.sport-therapy@yahoo.co.uk) for more details.



to reduce incidents of ASB in villages between Comberton and Cambourne and including those villages as well as addressing bad behaviour on the buses.

#### Action Taken

PCSOs have continued to travel along the bus route to act as a visual deterrent and to reassure passengers and staff.

Special Constables have travelled in plain clothes along the route. They have intervened in a number of minor incidents on the bus, ranging from bad language to “excitable” behaviour.

Over the last three months no alcohol has been seized by either PCSOs or Police officers on the route. Bus drivers and passengers report that in general the situation is improved on last year where specific groups did cause disruption on the Cambridge bus.

Evening and afternoon patrol over the weekends have been carried out on the following recreation and green spaces, both in plain clothes and in uniform. Officers have patrolled on foot to reach the more isolated areas of the recs. and green spaces.

- o Comberton Rec. and around both schools
- o Hardwick recreation ground
- o Barton recreation ground
- o Toft recreation area
- o Caldecote recreation ground
- o Bourn recreation ground

Over the last three months criminal damage and reports of bottles and litter have continued at recreation grounds in Bourn and Caldecote. Incidents have not been attributed to any particular persons or times and have not been successfully resolved by patrol work.

The nature and location of these areas (dark and isolated) makes it easy for incidents such as littering and minor damage to occur and difficult to detect.

#### 2. Current Situation

The remaining summer months may continue to attract young people to green spaces. Patrol work will continue as a matter of course. Consideration should be given to looking at the sources of alcohol which is still being used in the isolated green spaces. Trading standards have a number of initiatives planned around alcohol and tobacco sales to young persons; it may be worth considering further work with this project and a report back to the panel. Further work is needed on Bourn Recreation ground which has seen the worst of the damage and littering. Continue or Discharge? It is suggested that this plan continues.

## BLUE BINS ARE HITTING THE STREETS OF SOUTH CAMBRIDGESHIRE

Households across South Cambridgeshire will be taking delivery of their

## **W.J. Brown & Son**

**Motor Engineers**

**Your Local Friendly Garage**

**Cross Roads, Comberton**

**tel: 01223 263433**

**Sales - Services**

**Inspections pre-MOT - Travel Inspection**



## **SAUNDERS LANDSCAPES**

**36 School Lane, Toft, Cambs, CB23 7RE.**

**ALL FORMS OF LANDSCAPE CONSTRUCTION UNDERTAKEN**

**TEL: 01223 264113, MOBILE: 07774 127416**

**www.saunderslandscapes.co.uk**

**E-mail: martin.j.place@btinternet.com**

## **BARTON OIL BURNER SERVICES**

**86 CAMBRIDGE ROAD, BARTON, CAMBRIDGE. CB23 7AR**

**ROD AND ROBERT BUTLER  
OIL FIRED BURNER TECHNICIANS**

**SERVICING AND REPAIRS OF  
DOMESTIC OIL FIRED BOILERS**

**TELEPHONE: 01223 262305**



### **HEATING SERVICES**

For the installation, service,  
repair & replacement of gas  
and oil fired appliances.

**Call us today on  
01223 833426**

www.shelfordheating.co.uk  
sales@shelford-heating.co.uk  
CORGI & OFTEC registered



### **For a competitive quote....**

Home heating oil  
Monthly payment scheme  
Gas oil & diesel  
Premium lubricants  
Fuel card services

**01223 846846**

www.shelfordenergy.co.uk  
sales@shelford-energy.co.uk

new blue bin between 31 August and 6 October. The blue bin will replace the green box scheme and be an easier and cheaper way of collecting dry recyclables. Collections will take effect from Monday 11 October.

On delivery, residents are asked to be aware that the blue bin lids may not close properly due to the way in which they were stacked for storage. The lid should settle after a week or so.

The blue bin will be for the dry recyclables that residents currently place in their green boxes, including plastic bottles, glass bottles and jars, and food and drinks cans, as well as new materials, including plastic pots, tubs, trays, film (e.g. carrier bags and clean food wrapping) and cartons (e.g. tetra packs). Residents will also now be asked to place cardboard in the blue bin for recycling, instead of in the green bin for composting. Items must be placed loose in the blue bin (not in plastic bin bags or other containers) and should be rinsed to remove any risk of food contamination.

The blue bin will come with an inner caddy specially designed to keep paper (which includes magazines, directories, envelopes and junk mail) separate from the rest of the recycling. This is because paper is more valuable when it is kept separate. Residents are asked to keep the caddy in the blue bin as it prevents people from heavy lifting and does not need to be removed.

The blue bin will be delivered with an information pack, which will be placed in the caddy, giving residents all the information they need about the new recycling service. In the pack residents will find a battery bag for recycling domestic batteries. This will need to be put out for collection with the blue bin and will be replaced each time it is used. There will be clear instructions on the bag to demonstrate how it needs to be attached to the bin.

If residents successfully manage to fill their blue bin, excess dry recyclables will be collected when placed in a returnable container and left alongside the bin. Similarly, excess paper will be collected when kept separate and left in a returnable container alongside the blue bin.

The green bin will continue to be used for garden and food waste. Residents are asked not to put cardboard and paper in the green bin any longer and to put this in the blue bin for recycling instead. The black bin will now only be for waste that cannot be recycled or composted. Excess black and green bin material cannot be collected. Residents are asked to take it to the recycling centre at Milton or Thriplow.

The majority of residents will not experience a change to their collection day. There may, however, be a small change to the time of some collections so residents are reminded to ensure their bins are out by 7am on their designated day of collection.

Residents are welcome to keep their green boxes if they have a use for them. For those residents not wanting to keep them, there will be drop off points at Morrisons Cambourne, Tesco Bar Hill, Tesco Fulbourn or Tesco Milton where they will be picked up and sent for recycling.

## Cambourne Self Storage

- Cost effective, secure, convenient self-storage
- Various size units to suit household & business storage
- CCTV monitored site with access at your convenience
- NEW SITE AT BOURN AIRFIELD



- Your personal unit
- Store your goods, lock up, keep the key.
- 5 min from Cambourne

01954 717444

[www.cambourneselfstorage.co.uk](http://www.cambourneselfstorage.co.uk)



**HOME IMPROVEMENTS  
& MAINTENANCE**

Call Stuart Tunstall for  
Bespoke Cupboards & Shelving,  
Carpentry, Joinery,  
Painting & Decorating,  
Plastering, Tiling and much more...

For a free estimate  
telephone 01223 263664 / 0795 7101 814  
or email [him@thetunstalls.myzen.co.uk](mailto:him@thetunstalls.myzen.co.uk)

**FREE  
Lawn  
Health  
Check**



## Amazingly green lawns for surprisingly little!

We provide a specialist, professional service  
for people who are serious about their lawns

- Free Lawn Health Check -  
an in-depth survey of your lawn
- Free Programme Proposal -  
a unique solution for your lawn
- The finest feeds, fertilisers and weed  
control products available along with  
expert knowledge

For further information call us free on

**01480 812 393**

or email [info@prolawncares.co.uk](mailto:info@prolawncares.co.uk)

**ProLawnCare**

[www.prolawncares.co.uk](http://www.prolawncares.co.uk)

## **S E DAVEY**

**Plastering, Ceramic Tiling,  
Floor Screeding, Coving**

**TEL: 01954 210941**

**MOB: 07711 541799**

## **QUALIFIED CHIROPODIST**

Mr Leonard Kirkby **MSSCh MBChA**

Registered Member of the British  
Chiropody & Podiatry Association

Visiting Practice

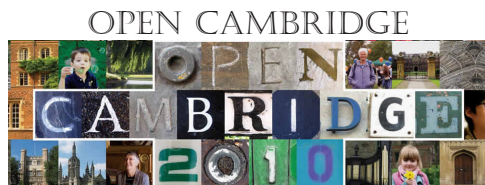
All instruments autoclaved

Mobile: 0787 098 3347

Home: 01480 451493

For more information residents are asked to visit [www.scambs.org.uk/blubin](http://www.scambs.org.uk/blubin) or to call 03450 450 063.

1. If residents have not received their blue bin by Wednesday 6 October they are asked to contact the Council on 03450 450 063.
2. Blue bin collections will replace the green box collections. They will, therefore, need to be put out on the same day as the green boxes would have been – the same day as the green bin.
3. More from communications on (01954) 713025 or [anna.efford@scambs.gov.uk](mailto:anna.efford@scambs.gov.uk)



### ***Open Cambridge weekend 2010: Friday 10 – Sunday 12 October 2010***

Take advantage of this fantastic opportunity to push open the doors to some of Cambridge's most historic and often mysterious buildings, and find out about what goes on behind the University and College walls. Amongst the many free tours, talks and open access events on offer this year, we are pleased to welcome a number of City venues to the programme, which will be featuring in *Open Cambridge* for the first time.

Coinciding with Heritage Open Days, *Open Cambridge* offers local people the chance to discover the history on their doorsteps and learn more about the city in which they live. We have more tours on offer this year than ever before, led by the experts who live and work on the sites being presented.

Some of our unique local history tours include:

View the Civic Insignia and historic Cambridge Charters

An exclusive opportunity to learn from the Sergeant-at-Mace, Chris Cracknell, about the Council's extensive collection of insignia and historic charters, and to view the collection.

A walk round Mill Road Cemetery

Find out more about the history of this beautiful cemetery, in addition to some of the famous names whose monuments lie within.

Brooklands: a short tour and history by English Heritage

The historic conservation group offers a rare insight into the history of Brooklands, built in 1827 by Richard Foster, a partner in Fosters Bank, requisitioned in World War Two and now the organisation's Regional Office.

For those who want to cover as much ground as possible during the weekend, The Bridge the Gap charity walk on Sunday 12 September is the perfect way to view a number of the City's historic Colleges and green spaces, while raising money for the Arthur Rank Hospice and Press Relief, two charities directly

# tai chi

for health and relaxation



New beginners' class  
starting in...

## **Cambourne**

**Thursday 16 September**  
**7.30pm**

The Vine Primary School  
Upper Cambourne  
Cambs CB23 6DY

New classes also starting in  
Cambridge, St Neots and  
elsewhere – please visit our  
website for details



The ancient Taoists were  
renowned for their study of the arts of health and  
longevity. The **Taoist Tai Chi™** internal art of tai chi  
chuan conveys the essence of this tradition to the  
modern world as a very special and effective  
form of health training, one that can work  
on the physical, mental and spiritual  
dimensions of our being.

ALL CULTURES MOVING TOGETHER IN HARMONY

Just turn up on the  
day, or for more information  
call Andy on 01480 830435  
or visit our website

**40**  
YEARS / ANN

[taoist.org.uk](http://taoist.org.uk)

A registered  
charity 1053425 / SC039513

## THE CHALLENGE

### JULY RESULT & WINNER

The missing words were, with acceptable alternatives in brackets  
POWDERHAM, LAYHAM (HATCHAM-SYDENHAM! said by a Cockney  
with a cold?), MARKHAM, FORDHAM (BRIDGHAM), CAYNHAM (CAIN-  
HAM BEETHAM), COOKHAM, DARNHAM (MENDHAM), PHILHAM  
(FILHAM), READHAM (REEDHAM), WREXHAM (CRASHAM), ASKHAM,  
SOHAM, DOWNHAM, BUCKINGHAM (THROUGHAM), THATCHAM,  
LASHAM (BIRCHAM), FELTHAM, OLDHAM (ELDHAM-ELDON)

WINNER: APRIL PENNICK

HARBOUR AVENUE

One of 11 entries.

benefiting our local community. Pre-booking is essential for this event and, for a very reasonable entry fee, walkers of all ages can enjoy touring the famous Backs and many of Cambridge's most attractive buildings.

For more information about *Open Cambridge* or to order a programme, please call: 01223 766766, visit our website: [www.cam.ac.uk/opencambridge](http://www.cam.ac.uk/opencambridge) or email: [opencam@admin.cam.ac.uk](mailto:opencam@admin.cam.ac.uk). Bookings for *Open Cambridge* tours are now open.

## FESTIVAL OF IDEAS 2010

Wednesday 20 October – Sunday 31 October 2010



Explore polar exploration, UFOs, palaeontology, language, politics, music and much more at the Cambridge Festival of Ideas. With over 170 mostly free events taking place throughout the two weeks – you will find something for everyone. Discover all aspects of the arts, humanities and social sciences through performances, film screenings, hands on activities, talks and workshops. The Festival of Ideas is brought to you by the team behind the Cambridge Science Festival.

Join us on Saturday 23 October for a whole day of insightful discussions, informative talks and hands on activities for all ages. Jacqueline Wilson will talk about her life and works, graduate students will discuss their research and children can experience life in Prehistory.

Enjoy our series of evening Spotlight Talks on thought provoking and often contentious topics, including: 'The Future of finance', 'Is the West losing its power?' and 'The future of the book'.

Other events of particular interest include:

From hieroglyphs to text: scripts, language and the brain

What can writing tell us about how languages work and how the mind works?

How we became modern

When did the West become modern and what brought about the change?

Drumming workshop

The Drumming workshop is back by popular demand! This is your opportunity to learn to play rhythms from Haiti and Brazil.

The talks and events will be held in university lecture halls, museums, art galleries and other venues around the town. The aim is to open up the University to the public and inspire people to learn more about the ideas in arts, humanities and social sciences which have shaped and are shaping the world.

For more information and a programme, please call: 01223 766766 or visit: [www.cambridgefestivalofideas.org](http://www.cambridgefestivalofideas.org) Bookings for Festival of Ideas events open on Monday 6 September

THE CHALLENGE  
SPONSORED BY COSTCUTTER STORES

It's summertime (summer the time anyway!) and the puzzle is easy. All that's required is to complete an alphabetical list of countries of the world and then..... to do it all over again. Theoretical top score is 52 but not attainable. How close can you get?

Please write your score below the puzzle.

A	A
B	B
C	C
D	D
E	E
F	F
G	G
H	H
I	I
J	J
K	K
L	L
M	M
N	N
O	O
P	P
Q	Q
R	R
S	S
T	T
U	U
V	V
W	W
X	X
Y	Y
Z	Z

Entries please to Costcutter, Library or Green End Surgery by 14<sup>th</sup> SEPTEMBER. The prize of £5, generously donated by Nayna & Vijay, is to be spent in store.

Name .....

Address .....



## AUTUMN LAWN CARE & RENOVATION

Following this summers conditions most lawns are in need of some renovation work to help the grass to recover before the weeds and moss take advantage.

Actions required in Autumn

- Scarify and over seed lawn. Will remove dead grass and thatch
- Aerate lawn. Relieves compaction and prepares soil for sowing extra seed
- Apply top dressing. Improves evenness and covers newly sown seed
- Autumn feed required. Puts new life and colour back in to the lawn

Some of the above tasks can be carried out by the lawn owner; other tasks may need some professional intervention.

For more information about ProLawnCare Ltd services on offer

Phone 01480 812393

[info@prolawncare.co.uk](mailto:info@prolawncare.co.uk) "... [www.prolawncare.co.uk](http://www.prolawncare.co.uk)

## THE FRIENDS OF THE ROSIE HOSPITAL



"The Friends of the Rosie Hospital are helping to make the Rosie a more comfortable environment for mothers and babies."

If you have any spare ribbons we are in urgent need of your donation.

Do you have a friend or relative that is looking for voluntary work at the moment - please ask them to have a look at our volunteering page at [www.rosieinstitches.org.uk/volunteering.htm](http://www.rosieinstitches.org.uk/volunteering.htm)

If you can improve our website, provide transport for our volunteers or display a small selection of our wares please contact a member of the committee, details are given on our website at [www.rosieinstitches.org](http://www.rosieinstitches.org).



Would you appreciate help with small jobs around the home, garden or in the wider village?

Isaiah58 involves young people from local churches helping out in the village community.

We have moved furniture, trimmed hedges, weeded gardens, swept leaves and painted bus shelters....

No project too small!

If you have a possible project for the team please call

Jonathan Catley, 01223 263508

07971 758041

jonathan.catley@hotmail.co.uk

We don't charge or ask for any donation for the help.

It is part of us putting our faith into action.

*Isaiah58 is a project run by WCCYM  
(West Cambridge Christian Youth Ministries)*

## COMBERTON LIBRARY

Monday	2.00pm - 7.00pm
Tuesday	Closed
Wednesday	10.00am - 1.00pm
	2.00pm - 5.00pm
Thursday	Closed
Friday	2.00pm - 7.00pm
Saturday	10.00am - 1.00pm
Sunday	Closed

The Village College, West Street, Comberton, Cambridge, CB23 7DU

Tel: 0845 045 5225

## RECREATION GROUND ROTA AUGUST TO DECEMBER 2010

Gate Open 8-30am to 1/2 hour after lighting up time Monday to Sunday inclusive.

August 23rd	to	September 5th	Mr & Mrs M. Sims
September 6th	to	September 19th	Mr R Sewell
September 20th	to	October 3rd	Mr & Mrs M Waters
October 4th	to	October 17th	Mr & Mrs A. Clarke
October 18th	to	October 31st	Mr & Mrs M. Sims
November 1st	to	November 14th	Mr R Sewell
November 15th	to	November 28th	Mr & Mrs M. Waters
November 29th	to	December 12th	Mr & Mrs A. Clarke
December 13th	to	December 26th	Mr & Mrs M. Sims
December 27th	to	January 9th 2011	Mr R. Sewell

Access on foot is not affected

# CONTACT'S USEFUL TELEPHONE NUMBERS

## Doctor Parker & Partners

58 Green End, Comberton.....	for appointments: 262500
.....	for prescriptions: 262399
Dr. Tobin & Partners, Bourn Surgery - Emergencies .....	(local call) 01954 719313
Alms Hill, Bourn.....Surgery appointments .....	(local call) 01954 719469
NHS-Child & Family Team, Sackville House, Sackville Way, Cambourne .....	01954 282830
Ash Croft Veterinary Surgery, 169 St Neot's Road, Hardwick. (local call) .....	01954 210250
Chair, Parish Council: Miss Chris Westgarth, 85 Barton Road .....	263242
Clerk to the Parish Council: Mrs Gail Stoehr .....	
Comberton Parish Council, PO Box 857, Comberton .....	01954 210241
(for planning applications see South Street notice board)	
Village Hall Lettings Secretary, Mrs Stephanie Young .....	262365
Nursery Way Sheltered Housing .....	264434
Comberton Playgroup .....	262373
Meridian County Primary School .....	262423
Comberton Village College .....	262503
CVC Community Education Office .....	264721
Comberton Library .....	08450 455225
Baptist Church - Rev. Stephen Henderson, Church Office .....	264707
Community Team - Hazel Charge .....	262827
Comberton Catholics - Rev. Robert Joyce .....	350787
St Mary's Church - Revd Mike Booker .....	260095
The Village Help Scheme	
Chairman: Janet McCabe .....	263387
Transport: Gill Redman .....	262246
If unavailable, try: Joan Wells .....	262746
or Barbara Urquhart .....	263364
Emergency Home Help: Rachel Thompson .....	262422
Gardening: Margaret Storey .....	262748
Cambridge Water (water) .....	01223 706050
Anglian Water (sewerage) emergency .....	0845 7145145
Water Emergency .....	01223 403000
Environmental Health Services .....	08450 450 063
Street Light Failure reporting telephone hotline .....	0800 253 529
South Cambridge District Council (S Harangozo, District Councillor) .....	264340
Cambridge County Council (Fiona Whelan, County Councillor) .....	01954 212725
Social Services, Comberton (Emergency out of hours) .....	264466 (01733 561370)
Benefits Agency, Chesterton Road, Cambridge .....	545200
Wood Green Animal Shelter (stray/lost dogs at SCDC on 443000) .....	01480 830014
Age Concern (Cambridge Information and advice line) .....	01354 696677
Samaritans .....	364455
Parkside Police Station .....	08454 564564
Comberton Ramblers .....	01223 262940

Village website: [www.comberton.org.uk](http://www.comberton.org.uk)

Comberton Contact Small Adverts website: [www.combertoncontact.org.uk](http://www.combertoncontact.org.uk)

## COMBERTON VILLAGE HALL LETTING CHARGES

### Main Hall (Village and Affiliated Community Group Use)

Private (except evening social events) £15.

Affiliated Group (except evening social events) £12.50

Weekday evening social events (Mon–Thurs) £40

Weekend evening social events (Fri/Sat/Sun) £60

Wedding reception (all day to midnight) £200

### Private (Village) and Affiliated Community Group Use

Meeting Room or Community Room £10

Committee meetings in Meeting/Community Room (Affiliates) £5

### Main Hall (Non-Village & Non-Affiliated Community Group Use)

Private (except evening social events) £25

Non-Affiliated Group (except evening social events) £20

Weekday evening social events (Mon–Thurs) £60

Weekend evening social events (Fri/Sat/Sun) £90

Wedding reception (all day to midnight) £300

### Private (Non-Village & Non-Affiliated Community Group Use)

Meeting Room or Community Room £15

### Community Commercial Use (for adults or children)

Main Hall (excluding Fri/Sat/Sun evenings) £30

Meeting Room or Community Room £20

Commerical Use (per hour) On application  
Charges are per session and include use of kitchen.

Sessions: 9am to 1pm, 2 to 5.30pm, 6 to 10.30pm  
(Midnight for Fri/Sat/Sun). Premises to be vacated by end of session.

Annual affiliation fee £10 due 1st January.

“Community Group Use” – local groups operating on a non-commercial basis.

Groups working with children and/or vulnerable adults will need to have child protection and vulnerable adult policies and procedures in place.

Bookings should be made with

## COMBERTON SURGERY

### OPENING TIMES:

Reception Mon-Fri 8:30am -12:30pm

Tel: 262500 1:30pm - 6:30pm

Weekend Emergencies contact CAMDOC,

tel: 01223 464242

(Phone goes to night service at 6.00pm - if you need to be seen after 6.00pm, please call CAMDOC, tel: 01223 464242)

Dispensary reception 8.45am - 12.30pm

1.30pm - 6.30pm

Saturday \* 8.30am - 10.30am

(\*collection of pre-ordered drugs only)

Dispensary phone calls only

(Tel: 262399) Mon-Frid 10.30am - 12.30pm

3.30pm - 6.00pm

Repeat Slips preferred.

### BOURN SURGERY OPENING TIMES:

#### Surgery

Monday - Friday 9.00am - 11.00am

4.00pm - 6.00pm

For out of hours emergencies call: CAM-DOC on 01954 719313

#### Pharmacy

Monday - Friday 9.00am - 1.00pm

4.00pm - 6.00pm

There is a branch of the surgery in Great Gransden at midday on Tuesdays, held at the Reading Room, Fox Street. No appointment is needed.

Village Hall Lettings Secretary  
Mrs Stephanie Young  
Tel: 01223 262365 (before 9pm)

Printed by Victoire Press Ltd,  
1 Trafalgar Way, Bar Hill, CB3 8SQ  
Tel: 01954 781919